

Viola

# Serenade

3 - Adagio

Léonard de Call  
Op. 75 no.3

8

*f*

Musical notation for measures 1-7, starting with a forte (*f*) dynamic. The key signature has two sharps (F# and C#) and the time signature is 3/4. The music features a mix of eighth and sixteenth notes.

8

*p* *f* *p*

Musical notation for measures 8-12, featuring a dynamic range from piano (*p*) to forte (*f*) and back to piano (*p*). The notation includes various rhythmic patterns.

13

*p* *f*

Musical notation for measures 13-18, with dynamics ranging from piano (*p*) to forte (*f*). The music continues with intricate rhythmic figures.

19

*dolce*

Musical notation for measures 19-22, marked *dolce* (sweetly). The tempo remains Adagio.

23

Musical notation for measures 23-25, continuing the melodic and rhythmic development.

26

*pp*

Musical notation for measures 26-31, marked *pp* (pianissimo). The music features some rests and dynamic shifts.

32

*p*

Musical notation for measures 32-35, marked *p* (piano). The notation includes various rhythmic patterns.

36

Musical notation for measures 36-39, continuing the piece's melodic line.

40

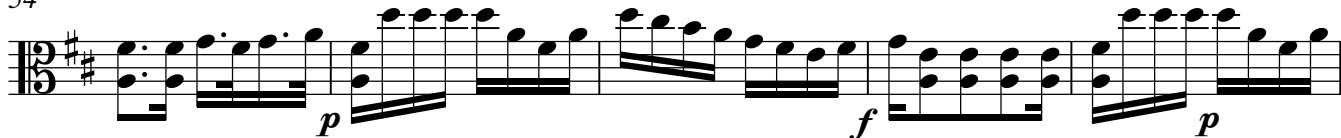
*f* *p* *f* *p*

Musical notation for measures 40-43, with dynamics ranging from forte (*f*) to piano (*p*) and back to forte (*f*) and piano (*p*).

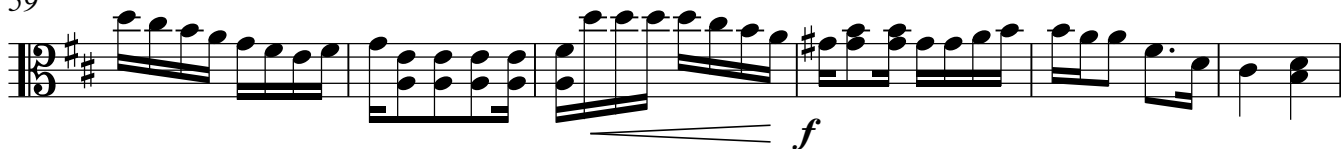
46



54



59



65



69



73



79



83



87



91

