

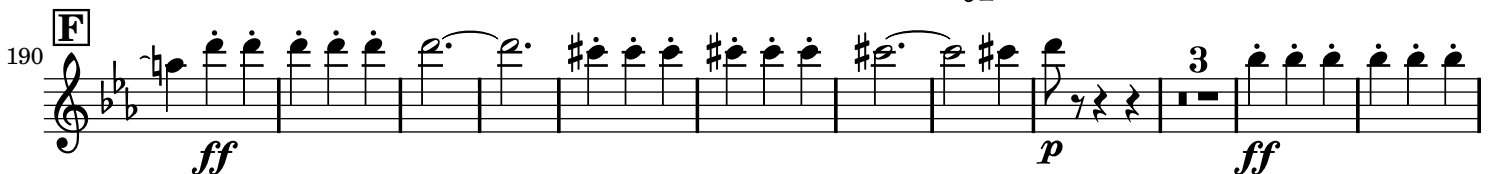
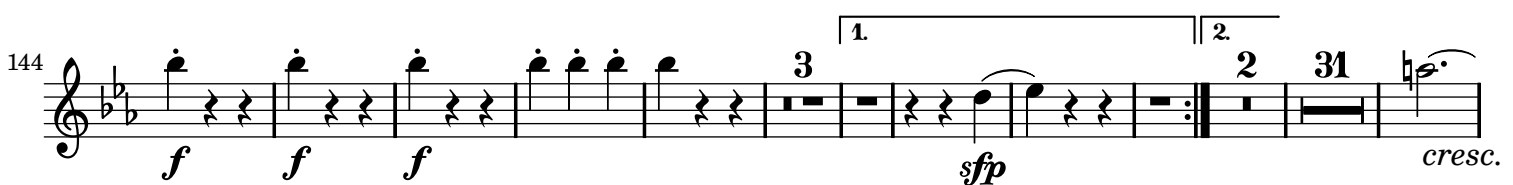
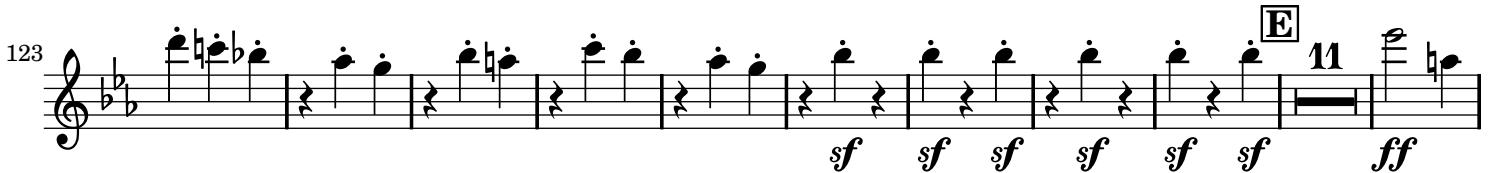
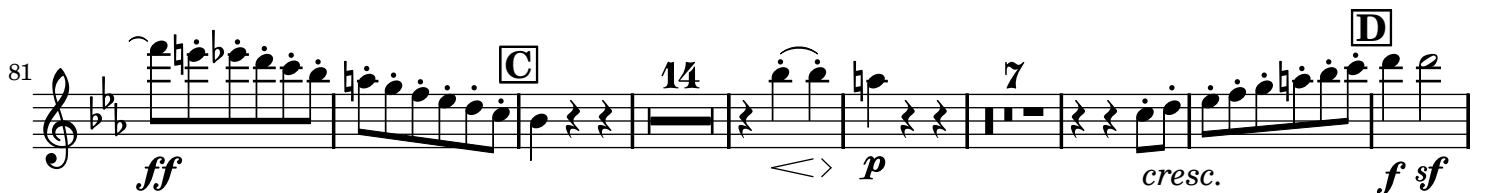
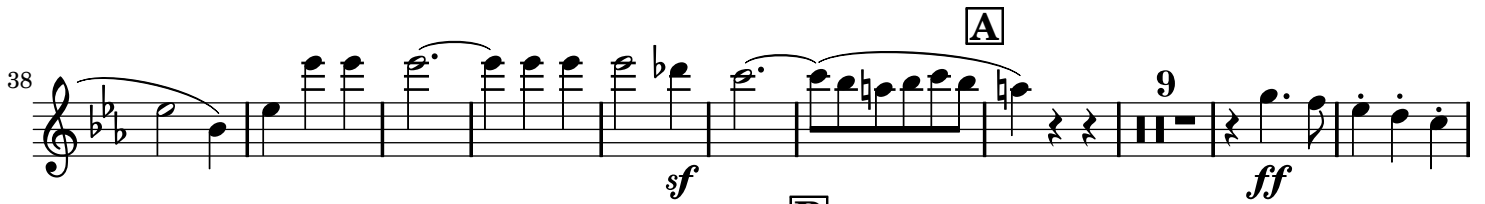
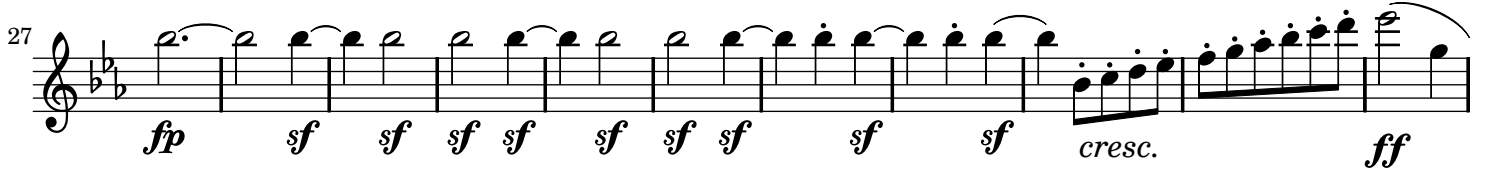
Symphony No. 3 in E \flat Major

Eroica

Flute II

Ludwig van Beethoven (1770-1827)

Op. 55

Allegro con brio ($\text{♩} = 60$)

204 *p* *ff* **G** 10 24

249 *sf* *ff* *sf* *sf* *sf* *sf* *sf* *sf* *sf* *sf* **H**

261 *sf* *sf* *sf* *sf* *sf* *sf* *sf* *sf* *sf* *sf* *sf* *sf* *sf* *sf* *sf* *sf* *sf* *sf* *sf*

274 *sf* *sf* *sf* *sf* *sf* *sf* *sf* *sf* *sf* *sf* *f* *f* *f* *f* *f* *f* *p* *sfp* **I** 4

290 *sfp* *p* *sf* *p* *sf* **2**

303 *f* *sf* *sf*

317 *sf* *sf* *sf* *ff* **K**

327 *p* **17**

355 *cresc.* *sf* *sf* *ff* **L**

369 *f* *ff* *pp* *cresc.* **M** 29 25

432 *f* *sf* *sf* *più f*

Flute II

443 **N** 9 *ff sf sf sf sf ff*

463 **O** 3 *p cresc. f*

476 2 *cresc.*

488 **P** 23 **Q** *ff cresc. f sf sf sf sf*

520 2 *ff sf sf sf sf ff*

532 **R** 8 *sf sf sf sf sf sf cresc. ff*

551 **S** 5 *f f f f p ff p*

568 **T** 31 **U** 33 **V** 11 *p p cresc.*

652 *sf sf*

659 *f*

669 **W** 3 *sf sf sf ff p cresc.*

684

ff f sf f ff

Marcia funebre

A

Adagio assai (♩ = 80)

16 28

p sf p

B

52

f p f sf p

63

sf f p

Maggiore

76

ff sf sf sf sf p sempre più f

C

97

ff sf sf sf sf f sf sf

Minore

120

ff sf

D

133

sf

144

sf sf sf

E

153

p ff sf

F

177 **8** *p* *cresc. sf* *p* **3**

195 **G** **2** *f* *p* **3** *f* *sf* *p*

207 **H** **16** *cresc.* *p cresc.* *p* **18**

Scherzo

Allegro vivace (♩ = 116)

30 **28** **31** **A** *ff*

96 *sf*

108 **4** *p*

122 *f sf sf sf* **tr B** **13** *p* **7**

151 *p* *cresc.* *ff*

161 **1.** **2.** *f f f* *f f f* **Trio**

171 **22** **6** *p* *f*

208 **47** **4** **61** *f*

C

329 *ff* *sf*

369

381 *p* *ff* **Alla breve** (♩ = 116)

393 *p* *p* **13** **7**

421 *cresc.* *ff*

431 *f* *f* *cresc.* *f* *ff* *ff* *ff* **Coda** **12**

Finale

Allegro molto (♩ = 76)

6 *ff* *sf* *sf* *sf* *p* **8**

24 *ff* *p* *ff* *p* **5**

40 **1** **2** **3** **3**

62 *cresc. sf* *f* **7** **3** **3** **4** **2**

88 *sf* *f* **3** **4**

103 **A**
f *cresc. f*

116 *ff* *cresc. f* 28

155 *f* *f* 4 3

173 **B**
f *p* *cresc.* *p* 10

192 *sf* *sf* *sf* 8 3

209 **C**
ff *sempre f*

218

226 *sf* *sf* *sf* *sf* *sf* *sf* *sf*

238 *sf* *sf* *sf* *sf* *sf* *sf* *sf*

250 **D**
p 19

278 14 *p sf* *sf* 18 **E** *ff*

321

330

343 **Poco Andante** (♩ = 108) **F**

384

392 **G** 19 **sempre più f ff**

421 **Presto** (♩ = 116) 10 3 **ff**

441

450

457 **sempre più f ff**

466