

Ouverture til 5. Symphony

Ludv. v. Beethoven

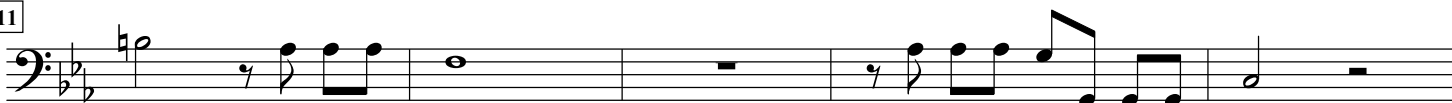
Euphonium



6



11



16



21



26



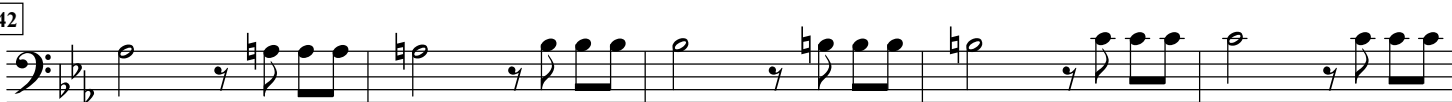
31



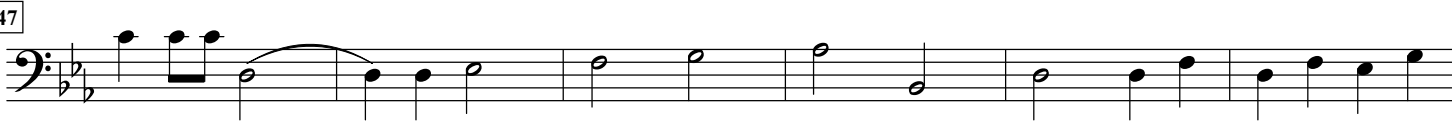
37



42



47



53

Euphonium



Musical notation for Euphonium, measures 53-57. The key signature has two flats (B-flat and E-flat), and the time signature is 4/4. The notation consists of a single staff with a bass clef. Measures 53-57 contain a sequence of eighth and quarter notes, with some notes beamed together. The melody starts on a middle C (C4) and moves generally upwards, ending on a G4.

58



Musical notation for Euphonium, measures 58-61. The key signature has two flats (B-flat and E-flat), and the time signature is 4/4. The notation consists of a single staff with a bass clef. Measures 58-61 contain a sequence of eighth and quarter notes, with some notes beamed together. The melody starts on a middle C (C4) and moves generally upwards, ending on a G4. The piece concludes with a double bar line.