

Sarabande & Variations

in C Major

J. S. Bach (BWV 990)

I. Sarabande (♩ = 60)

Interpretation for Flute, Violin & Guitar by Mike Magatagan 2017

Musical score for the first Sarabande, measures 1-18. The score is in 3/4 time with a tempo of 60 quarter notes per minute. It begins with a mezzo-forte (*mf*) dynamic. The melody is primarily in the right hand, with a simple bass line in the left hand. A *rit.* (ritardando) marking appears at the end of measure 18.

II. Variation (♩ = 60)

Musical score for the second variation, measures 1-18. The tempo remains at 60 quarter notes per minute. The melody is more active than the first Sarabande, featuring eighth and sixteenth notes. A *rit.* marking is present at the end of measure 18.

III. Variation (♩ = 60)

Musical score for the third variation, measures 1-19. The tempo is 60 quarter notes per minute. This variation is characterized by complex chordal textures and arpeggiated patterns in the right hand. A *rit.* marking is placed at the end of measure 19.

IV. Variation (♩ = 60)

Musical score for Variation IV, measures 1-15. The score is written in treble clef with a 3/4 time signature. It features a complex texture with multiple voices, including a melodic line and several accompaniment parts with chords and arpeggios. Measure numbers 9 and 16 are indicated at the start of their respective staves. A *rit.* marking is present at the end of the section.

V. Variation (♩ = 60)

Musical score for Variation V, measures 1-16. The score is written in treble clef with a 3/4 time signature. It features a complex texture with multiple voices, including a melodic line and several accompaniment parts with chords and arpeggios. Measure numbers 9 and 17 are indicated at the start of their respective staves. A *rit.* marking is present at the end of the section.

VI. Variation (♩ = 60)

Musical score for Variation VI, measures 1-21. The score is written in treble clef with a 3/4 time signature. It features a complex texture with multiple voices, including a melodic line and several accompaniment parts with chords and arpeggios. Measure numbers 5, 9, 12, 15, 18, and 21 are indicated at the start of their respective staves. A *rit.* marking is present at the end of the section.

VII. Variation (♩ = 60)



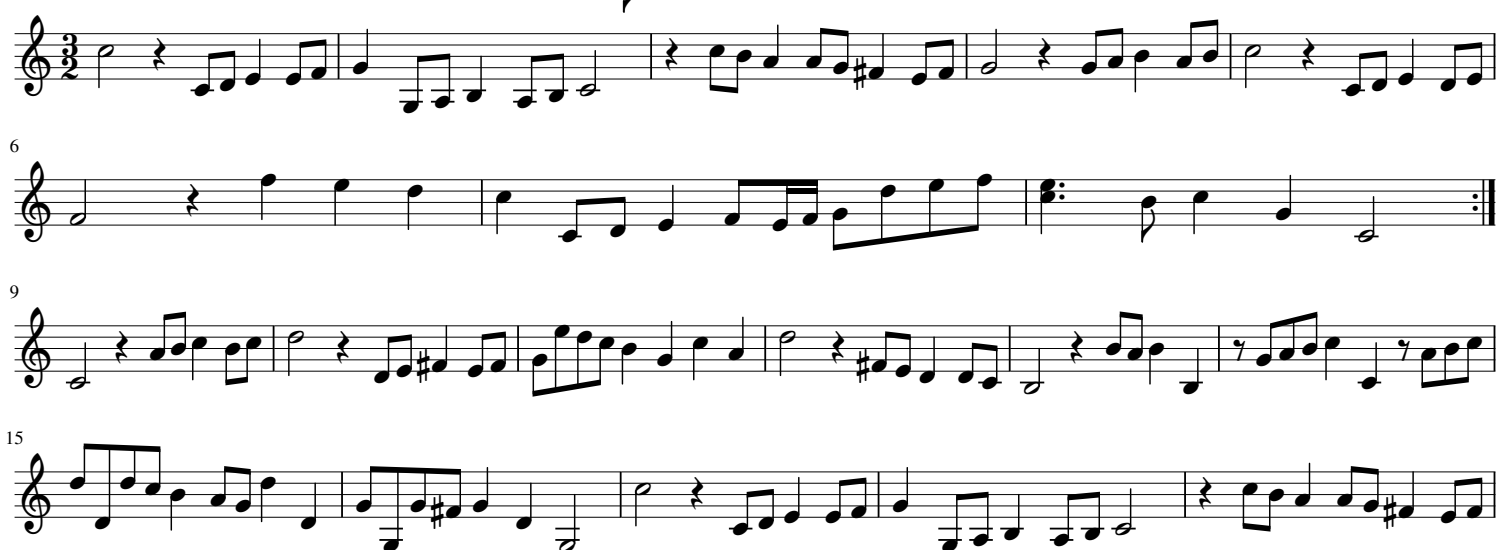
Musical score for Variation VII, measures 1-21. The score is written in treble clef with a key signature of one sharp (F#). The tempo is marked as ♩ = 60. The piece begins with a series of eighth notes, followed by a more complex rhythmic pattern in measures 9-16. A *rit.* marking appears in measure 17. The variation concludes with a final cadence in measure 21.

VIII. Variation (♩ = 60)



Musical score for Variation VIII, measures 1-20. The score is written in treble clef with a key signature of one sharp (F#). The tempo is marked as ♩ = 60. The piece features a mix of eighth and sixteenth notes, with a triplet in measure 9. A *rit.* marking is present in measure 19. The variation ends with a final cadence in measure 20.

IX. Variation (♩ = 60)



Musical score for Variation IX, measures 1-15. The score is written in treble clef with a key signature of one sharp (F#). The tempo is marked as ♩ = 60. The piece consists of eighth notes and rests, with a *rit.* marking in measure 15. The variation concludes with a final cadence in measure 15.

20

rit.

$\text{♩} = 60$

Musical staff for Variation X, measures 1-8. The melody features eighth and sixteenth notes with various rests and accidentals.

X. Variation ($\text{♩} = 60$)

Musical staff for Variation X, measures 9-14. The accompaniment consists of dense sixteenth-note chords.

9

Musical staff for Variation X, measures 15-19. Continuation of the accompaniment with some melodic fragments.

15

Musical staff for Variation X, measures 20-24. Continuation of the accompaniment.

20

rit.

Musical staff for Variation X, measures 25-28. Continuation of the accompaniment.

XI. Variation ($\text{♩} = 60$)

Musical staff for Variation XI, measures 1-5. The melody features long, flowing lines with slurs.

6

Musical staff for Variation XI, measures 6-8. Continuation of the melody.

9

Musical staff for Variation XI, measures 9-14. Continuation of the melody.

15

Musical staff for Variation XI, measures 15-19. Continuation of the melody.

20

rit.

Musical staff for Variation XI, measures 20-24. Continuation of the melody.

XII. Variation ($\text{♩} = 60$)

Musical staff for Variation XII, measures 1-3. The melody features eighth-note patterns.

4

Musical staff for Variation XII, measures 4-5. Continuation of the melody.

6

Musical staff for Variation XII, measures 6-8. Continuation of the melody.

9

13

18

21

rit.

23

XIII. Variation (Allemande ♩ = 60)

5

8

rit.

11

XIV. Variation (Courante ♩ = 68)

7

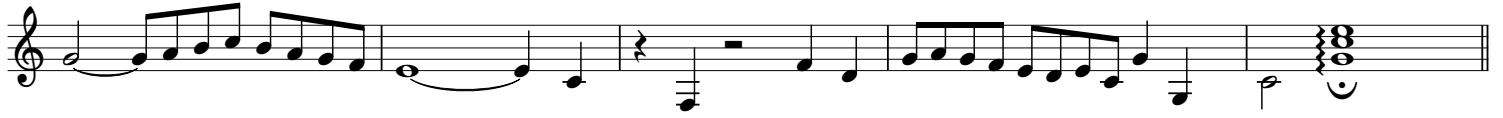
10

16



rit.

22



XV. Variation (♩ = 60)



5



rit.

♩ = 25

9



XVI. Variation (*L'ultima Partita o Gigue*, ♩ = 60)



5



9



13



16



rit.

20

