

Bassoon

Prelude in F# Major

(Transposed to C Major)

J. S. Bach (BWV 882 No. 1)

Prelude (♩ = 60)

Interpretation for Flute & Bassoon by Mike Magatagan 2017

5 *mf*

9

13

16

20

23

27

30 *tr*

33 *tr*

36

39



41



44



48



51



54



56



60



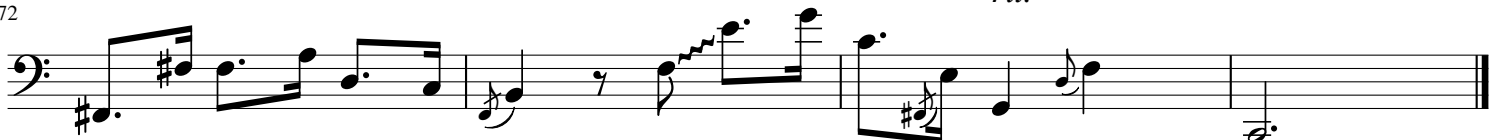
64



68



72



rit.

