

Suite anglesa n° 2 en La menor (BWV807)

Orquestació per orquesta barroca feta per Toni Tudurí

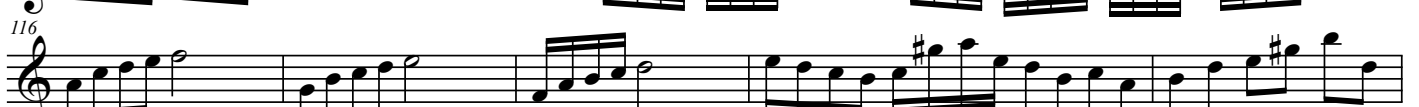
J.S.Bach

Arranjament fet per Toni Tudurí

6
11
16
21
26
31
36
41
46
51
56
61
66
71
76
81
86

Suite inglesa nº 2 en La menor (BWV807)

2



rit.

Allemande

Musical score for the Allemande movement, measures 157 to 179. The piece is in 4/4 time and G minor. The score consists of six staves of music. Measure numbers 157, 162, 166, 172, 175, and 179 are indicated at the beginning of their respective staves. The music features a variety of rhythmic patterns, including eighth and sixteenth notes, and rests. Trills (tr) are marked above several notes. The piece concludes with a double bar line and repeat dots.

Courante

Musical score for the Courante movement, measures 183 to 209. The piece is in 3/2 time and G minor. The score consists of five staves of music. Measure numbers 183, 189, 193, 199, and 209 are indicated at the beginning of their respective staves. The music is characterized by a steady eighth-note accompaniment in the right hand and a more melodic line in the left hand. Trills (tr) are marked above several notes. The piece concludes with a double bar line and repeat dots.

Sarabande

Musical score for the Sarabande movement, measures 209 to 237. The piece is in 3/4 time and G minor. The score consists of four staves of music. Measure numbers 209, 217, 224, and 237 are indicated at the beginning of their respective staves. The music is characterized by a slow, steady eighth-note accompaniment in the right hand and a more melodic line in the left hand. The piece concludes with a double bar line and repeat dots.

4 Bourrée I

Musical score for Bourrée I, measures 237-289. The score is written in treble clef with a key signature of one flat (B-flat). It consists of eight staves of music. Measure 237 starts with a repeat sign. Measure 261 has two empty square boxes above it. Measure 268 has a flat sign below the first note. Measure 273 has a fermata over the first note. Measure 279 has a fermata over the first note. Measure 284 has a fermata over the first note. Measure 289 has a fermata over the first note, a trill (tr) above the second note, and two empty square boxes above the final two notes. The piece ends with a double bar line and a repeat sign, followed by the word "Fine".

Bourrée II

Musical score for Bourrée II, measures 296-316. The score is written in treble clef with a key signature of two sharps (F# and C#). It consists of four staves of music. Measure 296 starts with a repeat sign. Measure 303 has two empty square boxes above it. Measure 310 has a fermata over the first note. Measure 316 has a fermata over the first note, a trill (tr) above the second note, and two empty square boxes above the final two notes. The piece ends with a double bar line and a repeat sign, followed by the instruction "D.C. al Fine".

D.C. al Fine

Gigue

5

323

330

336

342

348

354 *tr* □□ □□

361

367

373

379

385

391

397 □□ **Adagio**