

# Suite per a violoncel n° 4 en MibMajor BWV1010

Violí 2

Orquestració feta per Toni Tudurí

J.S.Bach  
Toni Tudurí

## 1-Prelude

13  
22  
29  
35  
41  
47  
51  
57  
62  
70

## 2-Allemande

5  
9  
13

Toni Tudurí (C) juliol 2016

2 Suite per a violoncel n° 4 en MibMajor BWV1010

Musical score for Suite per a violoncel n° 4 en MibMajor BWV1010, measures 18-39. The score is written in G major (one flat) and 3/4 time. It consists of six staves of music. A first ending bracket covers measures 37-38, and a second ending bracket covers measures 39-40. Measure numbers 18, 23, 27, 31, 35, and 39 are indicated at the start of their respective staves.

3-Courante

Musical score for 3-Courante, measures 9-52. The score is written in G major (one flat) and 3/4 time. It consists of nine staves of music. Measure numbers 9, 15, 21, 27, 34, 40, 46, and 52 are indicated at the start of their respective staves.

58



## 4-Sarabande

*2ª volta vent soli*

7



11

*2ª volta vent soli*

17



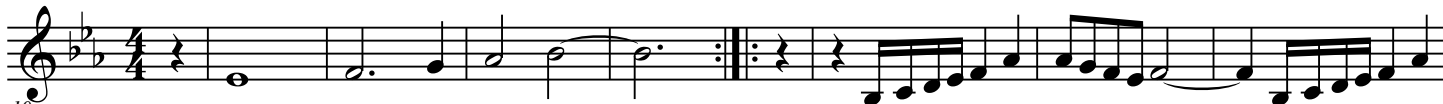
21

*Tutti*

29



## 5-Bourrée



10



16



21



26



33



38



45



## 6-Bourrée II

51 Solo Oboes

59 Tutti

D.C. al Fine

## 6-Gigue

5

9

13

17

21

25

29

33

37

41