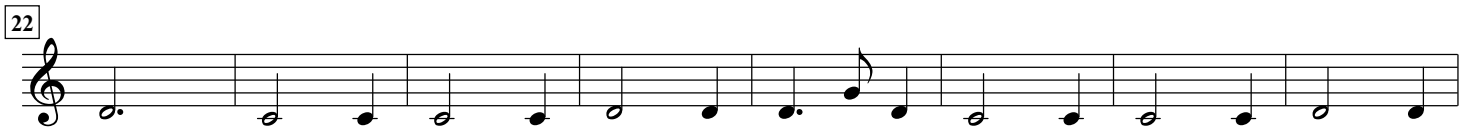


# A Hornepype

arr. Hans Jorgen Messerschmidt

Hugh Aston (1485-1558)

Allegro (♩=120)



81  
Horn F

86

91

96

101

107

112

119

125

130

136

142

148

Horn F

The image shows a single staff of music for the Horn F part, starting at measure 148. The staff is in treble clef. Measure 148 begins with a rest, followed by a series of eighth notes: G4, A4, B4, C5, B4, A4, G4. Measure 149 continues with eighth notes: F4, E4, D4, C4, B3, A3, G3. Measure 150 starts with a rest, followed by eighth notes: F3, E3, D3, C3, B2, A2, G2. Measure 151 contains eighth notes: F2, E2, D2, C2, B1, A1, G1. Measure 152 concludes with a half note G1, which is marked with a fermata. The staff ends with a double bar line.