

Viola

# Stowey (with interlude) V3

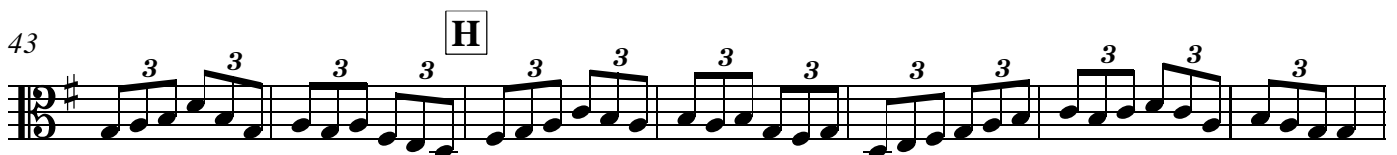
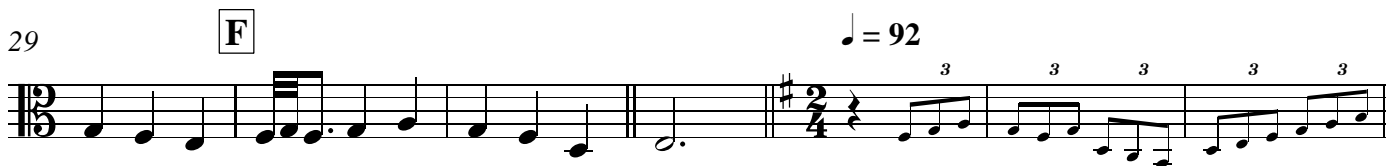
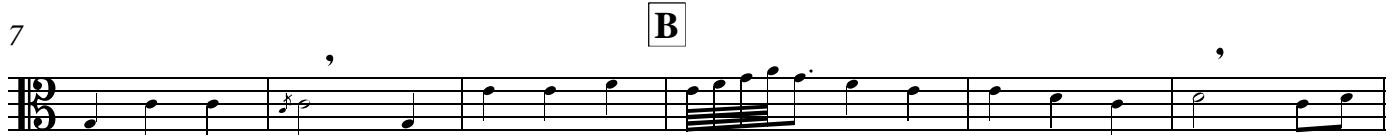
Only notation change: From 2 to 1 rest between Stowey & Interlude & Interlude & bridge.

Arr., additions C. Moskowitz, 3/03 Rev. 9.06, 5.08, 5.12, **4.17, all parts**

Soprno  $\text{♩} = 84$

**A**

copyright@carolynmoskowitz



copyright@carolynmoskowitz

Viola  
Stowey (with interlude) V3 (May 2012) T.S. Rev. 4/2017, all parts

50

I

Musical staff for measure 50, starting with a treble clef, a key signature of one sharp (F#), and a 12/8 time signature. The staff contains a sequence of notes with rests, including two triplet markings (3) over eighth notes.

60 J

Musical staff for measure 60, continuing with the same key signature and time signature. It features a melodic line with a fermata over a note, followed by the instruction *f Bring out your line.*

68 K

Musical staff for measure 68, showing a melodic line with a fermata over a note. The staff concludes with a double bar line and a 3/4 time signature change.

74 ♩ = 84

L

Musical staff for measure 74, with a tempo marking of ♩ = 84. The time signature changes to 3/4. The staff contains a melodic line with a dynamic marking of *f* (forte) and a *p* (piano) marking later in the measure.

80 M

Musical staff for measure 80, continuing the melodic line with a dynamic marking of *f*.

85 N

Musical staff for measure 85, featuring a melodic line with a dynamic marking of *f* and several triplet markings (3) over eighth notes.

90 O

Soprn.

Musical staff for measure 90, labeled 'Soprn.' (Soprano). It shows a melodic line with a dynamic marking of *f*.