

TOO YOUNG TO GO STEADY

SAXOPHONE B♭

TEMPO 68

JIMMY MCHUGH
HAROLD ADAMSON 1955

E7(#5)

A7(#5)

D-7

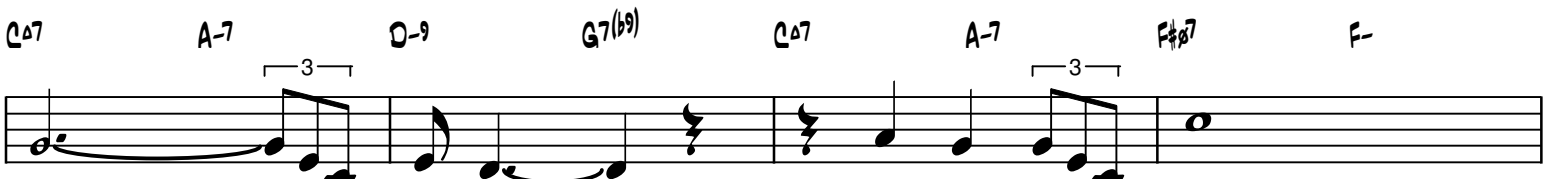
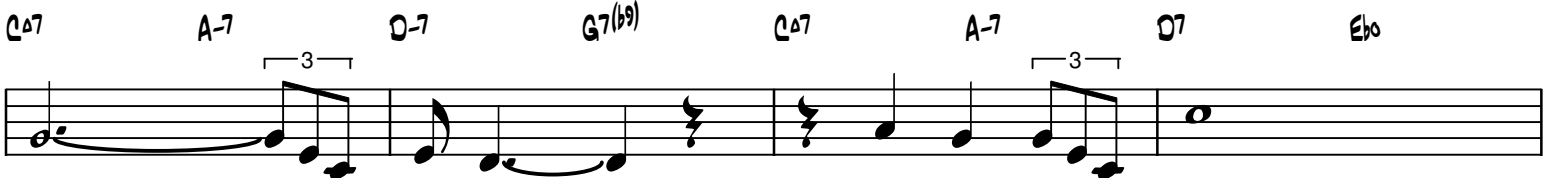
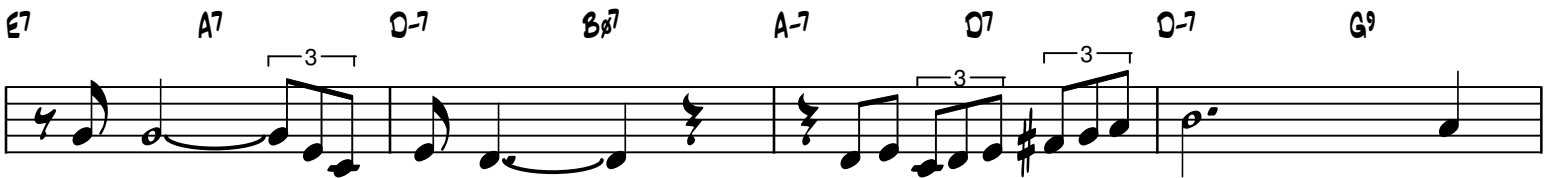
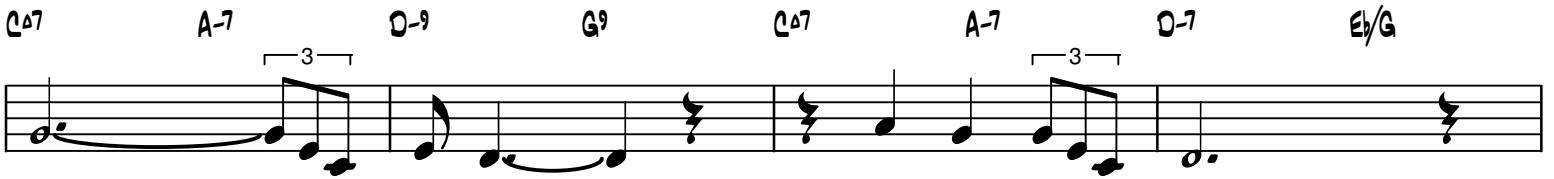
G7sus

CΔ7

B♭7sus

A-7

FΔ9



CΔ7 A-7 D-7 G7(b9) CΔ7 A-7 D-7 Eb/G

E7 A7 D-7 E7 A-7 D7 FΔ9 G7

CΔ7 A-7 D-7 G7(b9) CΔ7 A-7 D7 Ebo

E-7 A7 D-7 G7 CΔ7 F#Δ7 B7(b9)

E-7 E-6 F#Δ7 B7(b9) E-7 D7(#5) F#7(#5) B7(#5)

E-7 E-6 F#Δ7 B7(b9) E-7 A7 D-7 G7sus

CΔ7 A-7 D-7 G7(b9) CΔ7 A-7 F#Δ7 F-7

E-7 A7 D-7 G7sus F#Δ7 B7(b9) E-7(#5) A7

D-7 Bb7sus CΔ7 CΔ7