

English Horn

Chorale Motet: "Befiehl du deine Wege"

Johann Christoph Altnikol (1720 - 1759)

Interpretation for Woodwind Quartet by Mike Magatagan 2021

I. (♩ = 120)

Musical notation for the first section of the chorale motet, measures 1-10. The music is in common time (C) and begins with a mezzo-forte (*mf*) dynamic. It features a series of eighth and sixteenth notes, with a *rit.* (ritardando) marking at the end of the section.

Musical notation for the first section of the chorale motet, measures 10-20. The music continues with eighth and sixteenth notes, ending with a fermata.

II. (♩ = 80)

Musical notation for the second section of the chorale motet, measures 21-30. It begins with a triplet of eighth notes and continues with eighth and sixteenth notes.

Musical notation for the second section of the chorale motet, measures 31-40. The music features eighth and sixteenth notes with some rests.

Musical notation for the second section of the chorale motet, measures 41-50. It includes first and second endings, with *rit.* markings above the first ending and above the second ending.

III. (♩ = 80)

Musical notation for the third section of the chorale motet, measures 51-60. It begins with a sextuplet of eighth notes and continues with eighth and sixteenth notes.

Musical notation for the third section of the chorale motet, measures 61-70. The music features eighth and sixteenth notes with some rests.

Musical notation for the third section of the chorale motet, measures 71-80. The music continues with eighth and sixteenth notes.

Musical notation for the third section of the chorale motet, measures 81-90. It includes first and second endings, with a *rit.* marking above the second ending.

IV. (Aria) (♩ = 60)

Musical notation for the fourth section of the chorale motet, measures 91-100. It begins with a half rest followed by eighth and sixteenth notes.

Musical notation for the fourth section of the chorale motet, measures 101-110. The music features eighth and sixteenth notes with some rests.

14

rit.



V. (Trio ♩ = 120)



21



34



45



57

rit.



VI. (♩ = 84)



7



14



19



25



31

rit.



VII. (♩ = 40)

Musical score for VII. (♩ = 40) in G major, 6/8 time. The score consists of ten staves of music. The first staff starts at measure 1. The second staff starts at measure 9. The third staff starts at measure 16. The fourth staff starts at measure 23. The fifth staff starts at measure 30. The sixth staff starts at measure 36. The seventh staff starts at measure 42. The eighth staff starts at measure 50. The ninth staff starts at measure 57. The tenth staff starts at measure 64 and includes the marking *rit.* above the staff.

VIII. (Adagio ♩ = 35)

Musical score for VIII. (Adagio ♩ = 35) in G major, common time. The score consists of one staff of music. The marking *rit.* is placed above the staff at the end of the piece.

IX. (♩ = 84)

Musical notation for IX. (♩ = 84) in C major, 4/4 time. The melody starts with a quarter rest, followed by a quarter note G4, then eighth notes A4-B4-C5, and ends with a quarter note G4.

Adagio (♩ = 38)

Musical notation for Adagio (♩ = 38) in C major, 4/4 time. The melody starts with a quarter rest, followed by quarter notes G4-A4-B4, eighth notes C5-B4-A4, and ends with a quarter note G4.

Andante (♩ = 72)

Musical notation for Andante (♩ = 72) in C major, 4/4 time. The melody consists of eighth notes: G4-A4-B4-C5, A4-B4-C5, G4-A4-B4, and ends with a quarter note G4.

rit.

Musical notation for Andante (♩ = 72) in C major, 4/4 time. The melody consists of eighth notes: G4-A4-B4-C5, A4-B4-C5, G4-A4-B4, and ends with a quarter note G4.

X. Trio (Andante ♩ = 40)

Musical notation for X. Trio (Andante ♩ = 40) in 3/4 time. The melody consists of quarter notes: G4-A4-B4, C5-B4-A4, G4-A4-B4, and ends with a quarter note G4.

Musical notation for X. Trio (Andante ♩ = 40) in 3/4 time. The melody consists of quarter notes: G4-A4-B4, C5-B4-A4, G4-A4-B4, and ends with a quarter note G4.

rit.

Musical notation for X. Trio (Andante ♩ = 40) in 3/4 time. The melody consists of quarter notes: G4-A4-B4, C5-B4-A4, G4-A4-B4, and ends with a quarter note G4.

XI. (♩ = 80)

Musical notation for XI. (♩ = 80) in C major, 4/4 time. The melody consists of quarter notes: G4-A4-B4, C5-B4-A4, G4-A4-B4, and ends with a quarter note G4.

Musical notation for XI. (♩ = 80) in C major, 4/4 time. The melody consists of quarter notes: G4-A4-B4, C5-B4-A4, G4-A4-B4, and ends with a quarter note G4.

rit.

Musical notation for XI. (♩ = 80) in C major, 4/4 time. The melody consists of quarter notes: G4-A4-B4, C5-B4-A4, G4-A4-B4, and ends with a quarter note G4.

XII. (Adagio ♩ = 38)

Musical notation for XII. (Adagio ♩ = 38) in C major, 4/4 time. The melody consists of quarter notes: G4-A4-B4, C5-B4-A4, G4-A4-B4, and ends with a quarter note G4.

Musical notation for XII. (Adagio ♩ = 38) in C major, 4/4 time. The melody consists of quarter notes: G4-A4-B4, C5-B4-A4, G4-A4-B4, and ends with a quarter note G4.

XIII. (Allegro ♩ = 80)

tr



8



14



19



23

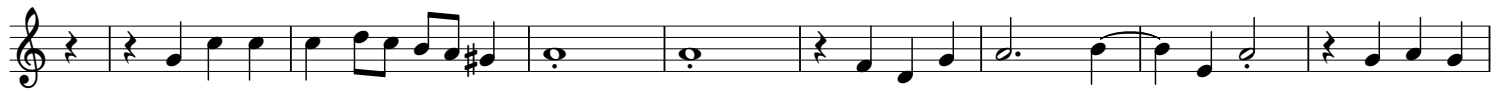
rit.



XIV. (♩ = 96)

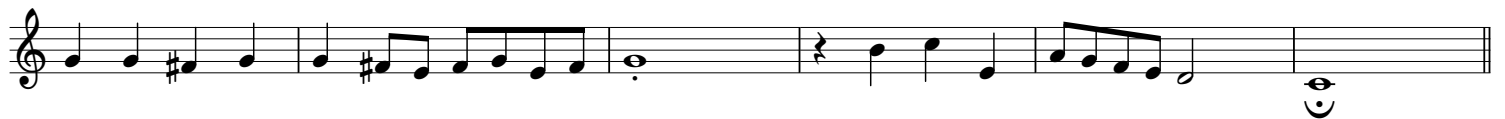


10



19

rit.



XV. (Presto ♩ = 160)



15



26



38

rit.

