

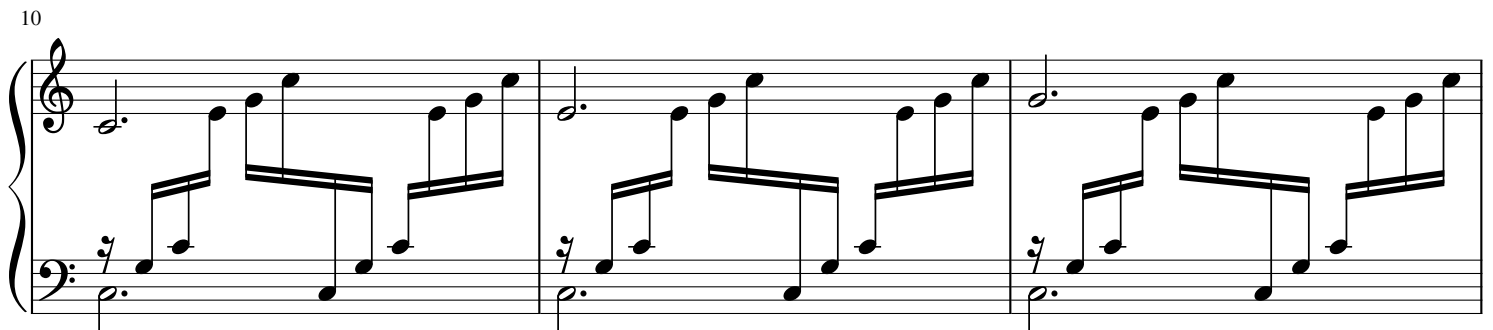
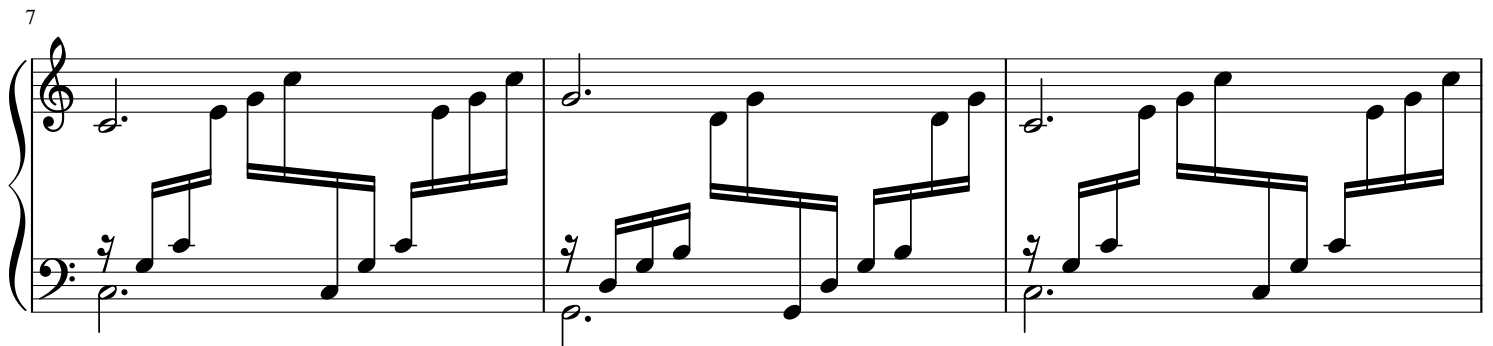
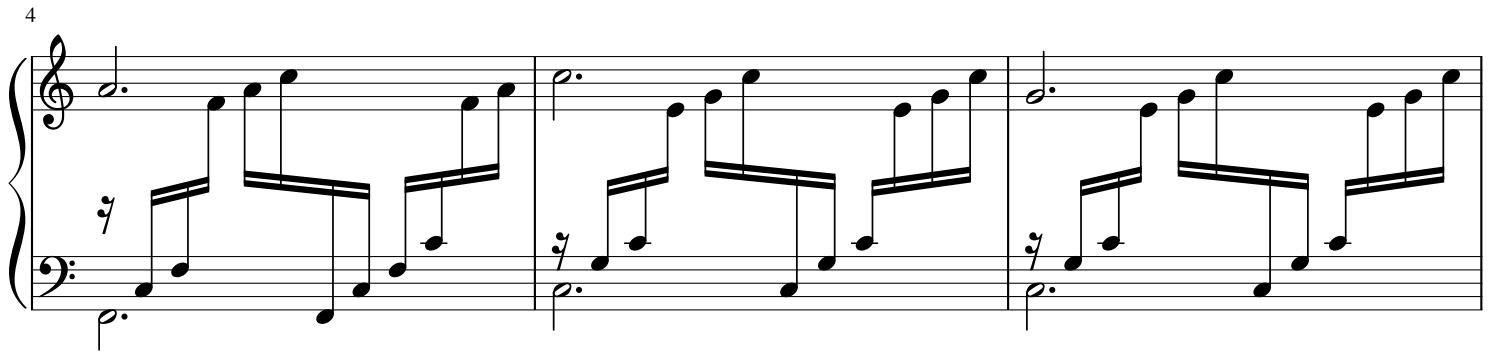
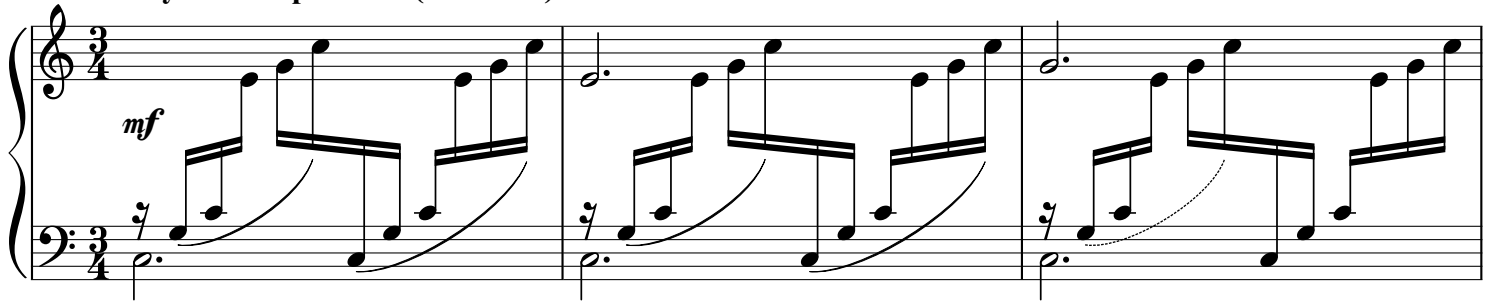
Harp

"O Holy Night"

Adolphe-Charles Adam (1803-1856)

Arranged for Flute & Harp by Mike Magatagan 2021

Freely with Expression (♩ = ca. 80)



13

Measures 13-15 of the musical score. The treble clef contains a melody of eighth and sixteenth notes. The bass clef features a steady eighth-note accompaniment. Measure 14 includes a key signature change to one sharp (F#).

16

Measures 16-18 of the musical score. The melody continues with eighth and sixteenth notes. The bass clef accompaniment remains consistent. Measure 17 includes a key signature change to two sharps (F# and C#).

19

Measures 19-21 of the musical score. The treble clef melody features a descending line in measure 20. The bass clef accompaniment continues with eighth notes.

22

Measures 22-24 of the musical score. The melody continues with eighth and sixteenth notes. The bass clef accompaniment remains consistent.

25

Measures 25-27 of the musical score. The treble clef melody continues with eighth and sixteenth notes. The bass clef accompaniment remains consistent.

28

Measures 28-30 of the musical score. The treble clef contains a melody of eighth and sixteenth notes. The bass clef features a harp accompaniment with a repeating eighth-note pattern and a dotted half-note bass line.

31

Measures 31-33 of the musical score. The treble clef continues the melody. The bass clef harp accompaniment remains consistent with the previous measures.

34

Measures 34-36 of the musical score. The treble clef melody continues. The bass clef harp accompaniment continues. At the end of measure 36, the treble clef changes to a C-clef (soprano clef).

37

Measures 37-39 of the musical score. The treble clef is now a C-clef (soprano clef). The bass clef harp accompaniment continues. At the end of measure 39, the treble clef changes to an F-clef (alto clef).

40

Measures 40-42 of the musical score. The treble clef is now an F-clef (alto clef). The bass clef harp accompaniment continues.

43

Measures 43-45 of the piano arrangement. The music is in 3/4 time. The right hand plays a melody of eighth and sixteenth notes, while the left hand provides a steady eighth-note accompaniment. Measure 43 begins with a treble clef and a key signature of one flat.

46

Measures 46-48. The musical pattern continues with the right hand's melodic line and the left hand's accompaniment. Measure 46 starts with a treble clef and a key signature of one flat.

49

Measures 49-51. The arrangement continues with the same melodic and accompanimental patterns. Measure 49 begins with a treble clef and a key signature of one flat.

rit.

52

Measures 52-54. The music continues with the established melodic and accompanimental patterns. Measure 52 starts with a treble clef and a key signature of one flat.

55

Measures 55-57. The final measures of this section. Measure 55 begins with a treble clef and a key signature of one flat. The piece concludes with a double bar line and repeat signs in both staves.