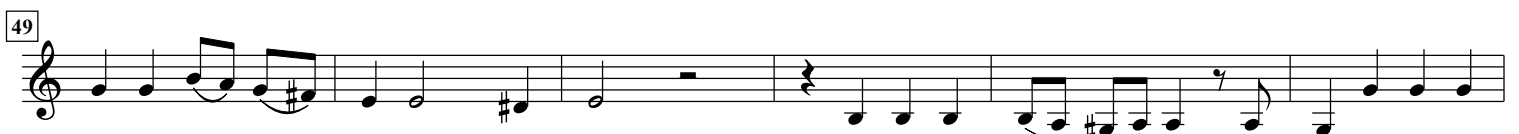


# Sonata III in C major - Opus 1

arr. Hans Jorgen Messerschmidt

Karl Friedrich Abel (1723-1787)

Allegro (♩=120)



61  
Horn F

Musical staff for Horn F, measures 61-65. The staff begins with a treble clef and a key signature of one flat (F major). Measure 61 starts with a quarter note G4, followed by eighth notes A4, B4, and C5. Measure 62 contains a quarter note D5, a quarter note E5, and a quarter note F5. Measure 63 features a quarter note G5, a quarter note A5, and a quarter note B5. Measure 64 has a quarter note C6, a quarter note B5, and a quarter note A5. Measure 65 consists of a quarter note G5, a quarter note F5, and a quarter note E5.

66

Musical staff, measures 66-71. Measure 66 starts with a quarter note G4, followed by eighth notes A4, B4, and C5. Measure 67 contains a quarter note D5, a quarter note E5, and a quarter note F5. Measure 68 features a quarter note G5, a quarter note A5, and a quarter note B5. Measure 69 has a quarter note C6, a quarter note B5, and a quarter note A5. Measure 70 consists of a quarter note G5, a quarter note F5, and a quarter note E5. Measure 71 ends with a quarter note D5.

72

Musical staff, measures 72-76. Measure 72 starts with a quarter note G4, followed by eighth notes A4, B4, and C5. Measure 73 contains a quarter note D5, a quarter note E5, and a quarter note F5. Measure 74 features a quarter note G5, a quarter note A5, and a quarter note B5. Measure 75 has a quarter note C6, a quarter note B5, and a quarter note A5. Measure 76 consists of a quarter note G5, a quarter note F5, and a quarter note E5.

77

Musical staff, measures 77-81. Measure 77 starts with a quarter note G4, followed by eighth notes A4, B4, and C5. Measure 78 contains a quarter note D5, a quarter note E5, and a quarter note F5. Measure 79 features a quarter note G5, a quarter note A5, and a quarter note B5. Measure 80 has a quarter note C6, a quarter note B5, and a quarter note A5. Measure 81 ends with a quarter note G5.