

Guitarra 1

BWV - 976

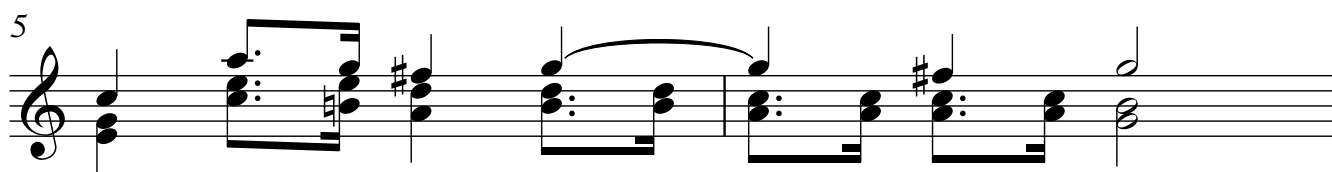
CONCIERTO DE VIVALDI - RV 265

2.- LARGO

TRANSCRIPCIÓN: LUIS ALVAREZ

J. S. BACH
(1685-1750)

♩ = 55



7

Musical notation for measures 7 and 8. Measure 7 contains a treble clef, a key signature of one sharp (F#), and a 7/8 time signature. The melody consists of eighth and sixteenth notes, with a double sharp (x) above the second measure. The bass line features dotted quarter notes and eighth notes. Measure 8 continues the melody and bass line.

9

Musical notation for measures 9 and 10. Measure 9 continues the melody and bass line from the previous system. Measure 10 features a treble clef, a key signature of one sharp (F#), and a 7/8 time signature. The melody and bass line continue with similar rhythmic patterns.

11

Musical notation for measures 11 and 12. Measure 11 continues the melody and bass line. Measure 12 features a treble clef, a key signature of one sharp (F#), and a 7/8 time signature. The melody and bass line continue with similar rhythmic patterns.

13

Musical notation for measures 13 and 14. Measure 13 continues the melody and bass line. Measure 14 features a treble clef, a key signature of one sharp (F#), and a 7/8 time signature. The melody and bass line continue with similar rhythmic patterns.

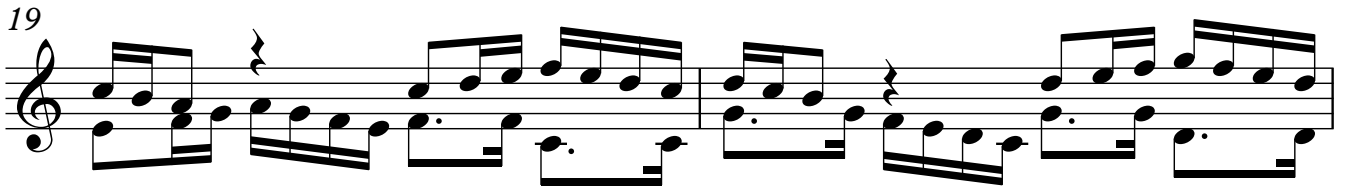
15

Musical notation for measures 15 and 16. Measure 15 continues the melody and bass line. Measure 16 features a treble clef, a key signature of one sharp (F#), and a 7/8 time signature. The melody and bass line continue with similar rhythmic patterns.

17

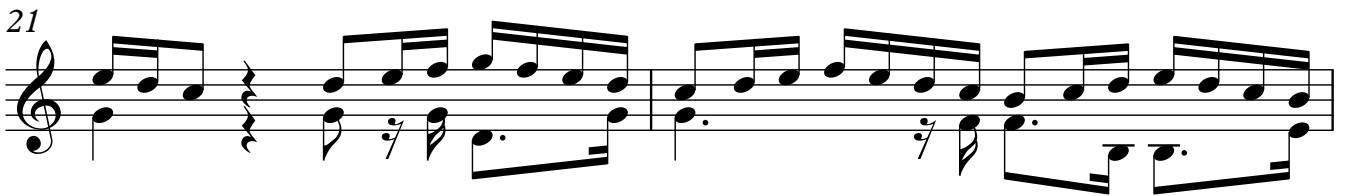
Musical notation for measures 17 and 18. Measure 17 continues the melody and bass line. Measure 18 features a treble clef, a key signature of one sharp (F#), and a 7/8 time signature. The melody and bass line continue with similar rhythmic patterns.

19



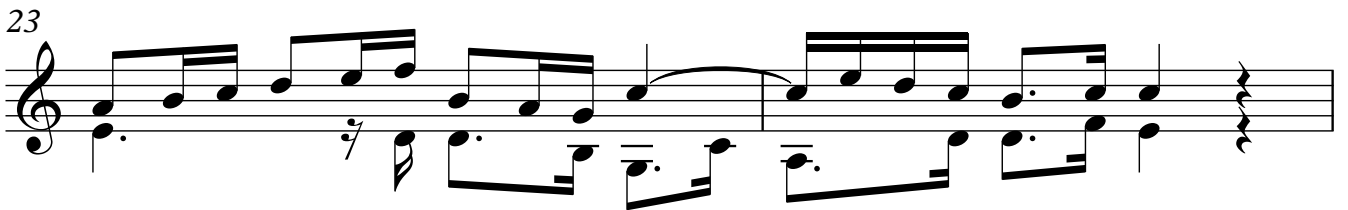
Musical notation for measures 19 and 20. Measure 19 contains two measures of music with eighth-note patterns. Measure 20 contains two measures of music with eighth-note patterns and a fermata over the final note.

21



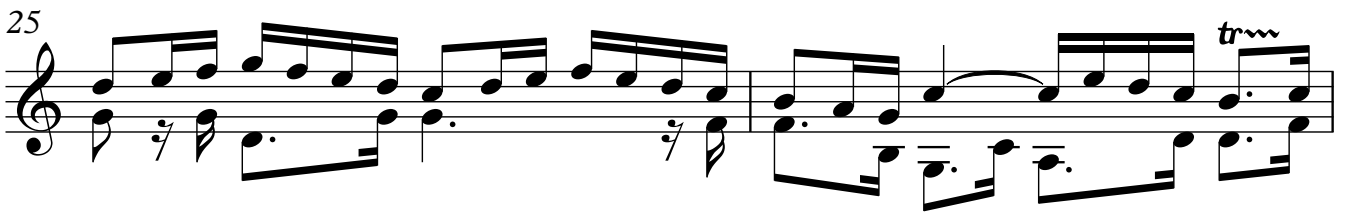
Musical notation for measures 21 and 22. Measure 21 contains two measures of music with eighth-note patterns. Measure 22 contains two measures of music with eighth-note patterns and a fermata over the final note.

23



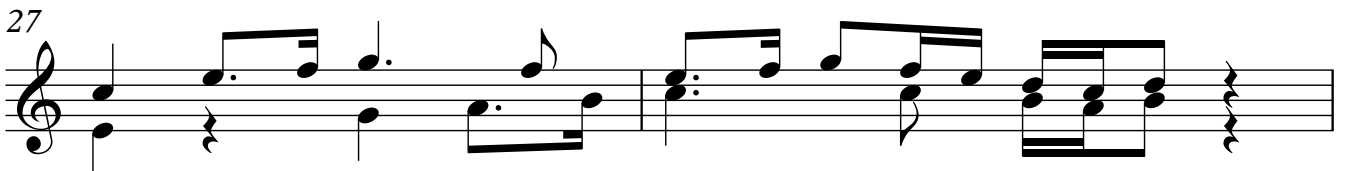
Musical notation for measures 23 and 24. Measure 23 contains two measures of music with eighth-note patterns. Measure 24 contains two measures of music with eighth-note patterns and a fermata over the final note.

25



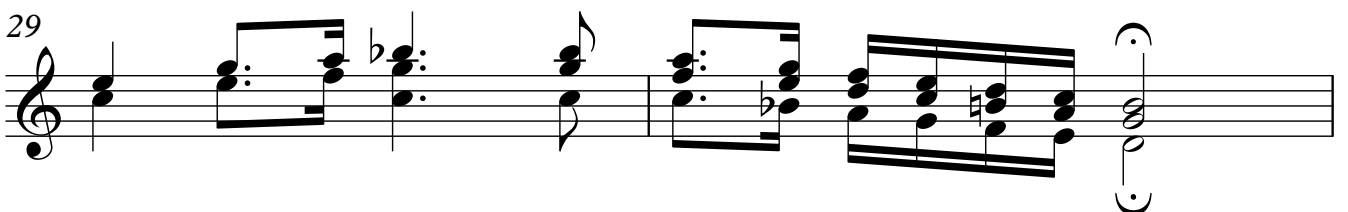
Musical notation for measures 25 and 26. Measure 25 contains two measures of music with eighth-note patterns. Measure 26 contains two measures of music with eighth-note patterns and a fermata over the final note, marked with a *trm* (trill) symbol.

27



Musical notation for measures 27 and 28. Measure 27 contains two measures of music with eighth-note patterns. Measure 28 contains two measures of music with eighth-note patterns and a fermata over the final note.

29



Musical notation for measures 29 and 30. Measure 29 contains two measures of music with eighth-note patterns. Measure 30 contains two measures of music with eighth-note patterns and a fermata over the final note.

4

Guitarra 1

31

Musical notation for Guitarra 1, measures 31-35. The notation is on a single staff with a treble clef. Measure 31 starts with a quarter note G4 and a quarter note F4. Measure 32 contains a dotted quarter note G4 and an eighth note F4, followed by a quarter rest. Measure 33 contains a quarter note G4 and a quarter note F4, followed by a quarter rest. Measure 34 contains a quarter note G4 and a quarter note F4, followed by a quarter rest. Measure 35 contains a quarter note G4 and a quarter note F4, followed by a quarter rest. The piece ends with a double bar line.