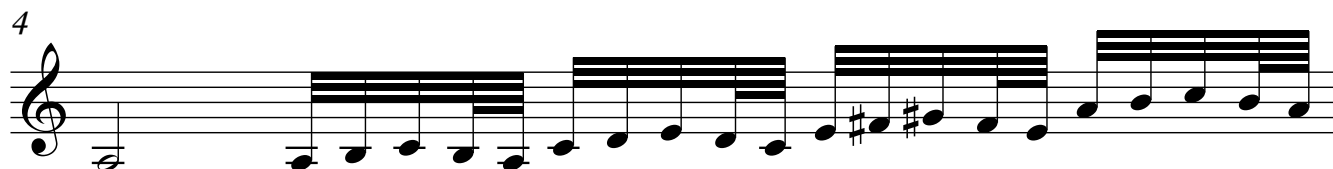
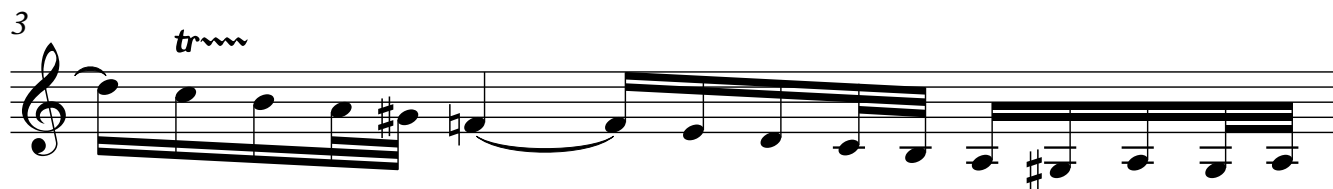
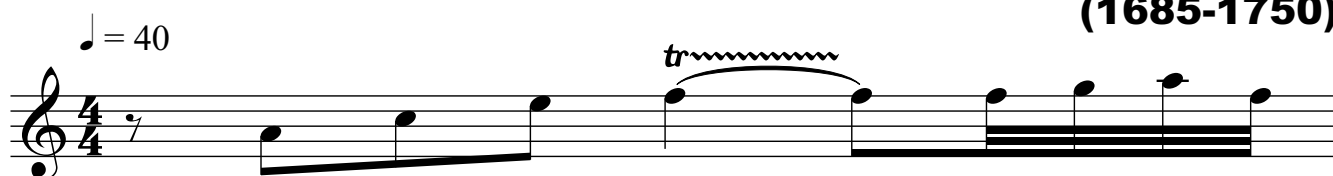


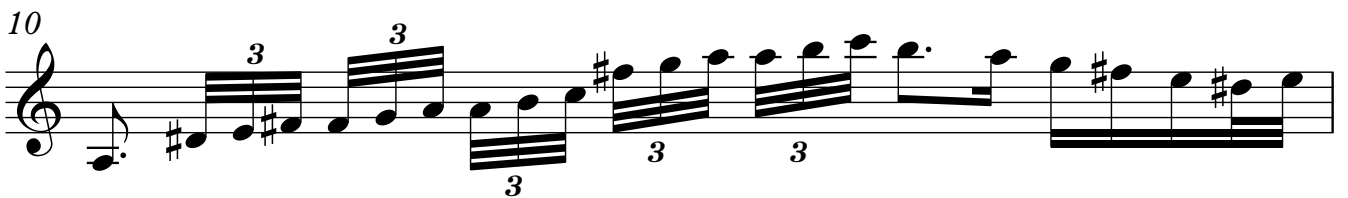
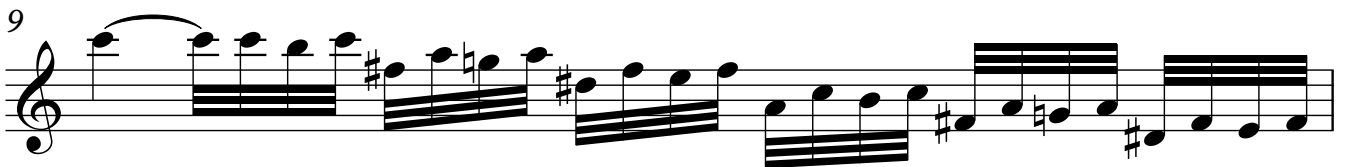
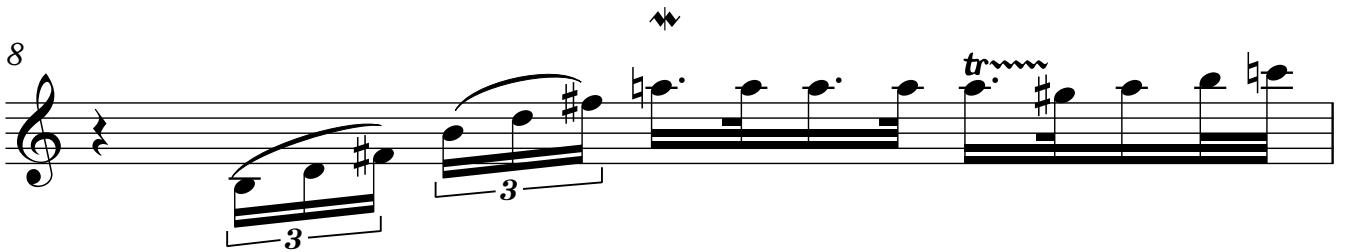
Guitarra 1

BWV - 594 CONCIERTO 2.- RECITATIVO (VIVALDI RV-208)

TRANSCRIPCIÓN: LUIS ALVAREZ

J. S. BACH
(1685-1750)





11



Musical notation for measure 11, featuring a treble clef and a series of eighth and sixteenth notes with various accidentals.

12



Musical notation for measure 12, featuring a treble clef and a series of eighth notes with various accidentals, including a trill-like figure.

13



Musical notation for measure 13, featuring a treble clef and a series of eighth notes with various accidentals, including a trill-like figure labeled *tr*.

14



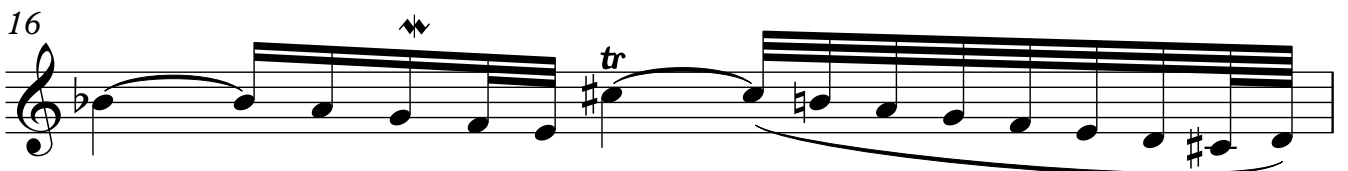
Musical notation for measure 14, featuring a treble clef and a series of eighth notes with various accidentals, including a trill-like figure labeled *tr*.

15



Musical notation for measure 15, featuring a treble clef and a series of eighth notes with various accidentals, including a trill-like figure.

16



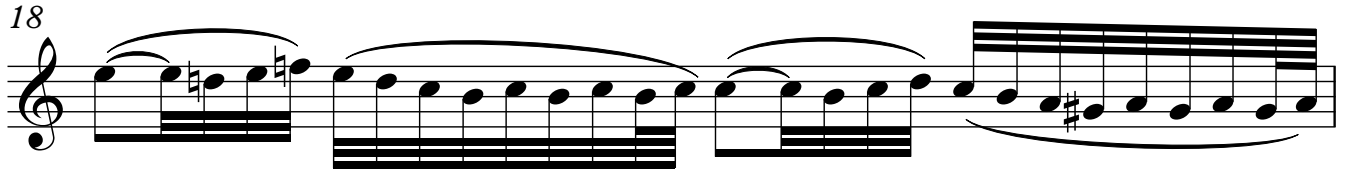
Musical notation for measure 16, featuring a treble clef and a series of eighth notes with various accidentals, including a trill-like figure labeled *tr*.

17



Musical notation for measure 17, featuring a treble clef, a key signature of one sharp (F#), and a 4/4 time signature. The measure contains a sequence of eighth notes: G4, A4, B4, C5, D5, E5, F#5, G5, A5, B5, C6, D6, E6, F#6, G6, A6, B6, C7. There are two trills (tr) above the first and third notes.

18




Musical notation for measure 18, featuring a treble clef, a key signature of one sharp (F#), and a 4/4 time signature. The measure contains a sequence of eighth notes: G4, A4, B4, C5, D5, E5, F#5, G5, A5, B5, C6, D6, E6, F#6, G6, A6, B6, C7. There are slurs over the first two and last two groups of notes.

19



Musical notation for measure 19, featuring a treble clef, a key signature of one sharp (F#), and a 4/4 time signature. The measure contains a sequence of eighth notes: G4, A4, B4, C5, D5, E5, F#5, G5, A5, B5, C6, D6, E6, F#6, G6, A6, B6, C7. There are slurs over the first two and last two groups of notes, and a trill (tr) above the eighth note.

20



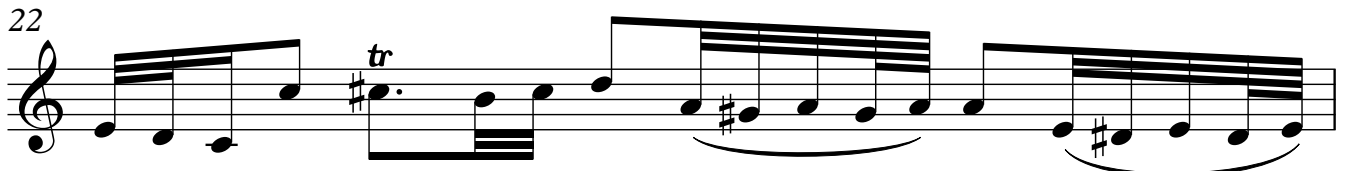
Musical notation for measure 20, featuring a treble clef, a key signature of one sharp (F#), and a 4/4 time signature. The measure contains a sequence of eighth notes: G4, A4, B4, C5, D5, E5, F#5, G5, A5, B5, C6, D6, E6, F#6, G6, A6, B6, C7. There are slurs over the first two and last two groups of notes.

21



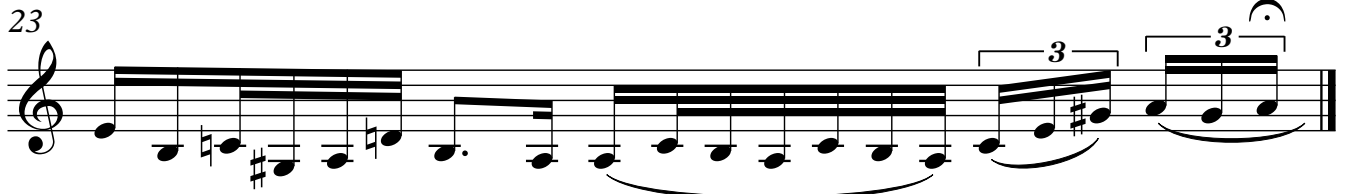
Musical notation for measure 21, featuring a treble clef, a key signature of one sharp (F#), and a 4/4 time signature. The measure contains a sequence of eighth notes: G4, A4, B4, C5, D5, E5, F#5, G5, A5, B5, C6, D6, E6, F#6, G6, A6, B6, C7. There are slurs over the first two and last two groups of notes.

22



Musical notation for measure 22, featuring a treble clef, a key signature of one sharp (F#), and a 4/4 time signature. The measure contains a sequence of eighth notes: G4, A4, B4, C5, D5, E5, F#5, G5, A5, B5, C6, D6, E6, F#6, G6, A6, B6, C7. There is a trill (tr) above the eighth note, and slurs over the first two and last two groups of notes.

23



Musical notation for measure 23, featuring a treble clef, a key signature of one sharp (F#), and a 4/4 time signature. The measure contains a sequence of eighth notes: G4, A4, B4, C5, D5, E5, F#5, G5, A5, B5, C6, D6, E6, F#6, G6, A6, B6, C7. There are slurs over the first two and last two groups of notes, and triplets (3) over the last two groups of notes.