

Contra

Cap 2 Violini e Viola obbligato

Flauto Traverso

Violino

Fagotto

Basso

Contra Basso

A handwritten musical score on aged paper, featuring four staves. The top staff is for Flauto Traverso, the second for Violino, the third for Fagotto, and the fourth for Basso. The notation includes various note values, rests, and dynamic markings. The paper shows signs of age with some staining and foxing.



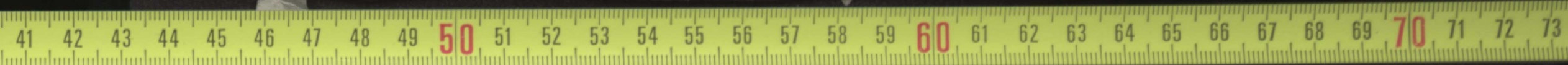
Handwritten musical notation on four staves. The notation is dense and includes various rhythmic values, including sixteenth and thirty-second notes, as well as rests and beams. The paper shows signs of age and wear.

Handwritten musical notation on four staves. The notation is dense and includes various rhythmic values, including sixteenth and thirty-second notes, as well as rests and beams. A *Solo* marking is visible above the first staff. The paper shows signs of age and wear.



A system of four staves of handwritten musical notation. The top staff is filled with dense, rapid sixteenth-note passages, featuring several triplets and some notes with 'p' (piano) markings. The second staff contains fewer notes, with some beamed eighth notes and a few longer notes. The third staff shows a rhythmic pattern of eighth notes, with some notes beamed together. The fourth staff is mostly empty, with a few scattered notes and rests.

A second system of four staves of handwritten musical notation. The top staff continues with dense sixteenth-note passages, including triplets and some notes with 'p' markings. The second staff has more notes, including some beamed eighth notes and a few longer notes. The third staff shows a rhythmic pattern of eighth notes, with some notes beamed together. The fourth staff is mostly empty, with a few scattered notes and rests.



Handwritten musical notation on a system of four staves. The notation includes various note values, rests, and dynamic markings such as *f.* and *ff.*. Above the first staff, there are several groups of notes with a flat sign (*b.*) and a dot (*.*), possibly indicating a specific rhythmic pattern or a sequence of notes. The third staff features a dense, complex texture with many overlapping notes and beams. The system concludes with the handwritten text *in B.* at the end of the fourth staff.

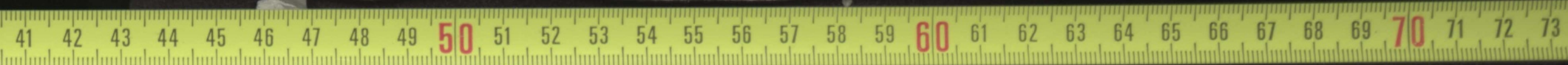
Handwritten musical notation on a system of four staves. The notation is dense and includes various note values, rests, and dynamic markings such as *f.* and *ff.*. The first staff begins with a flat sign (*b.*). The notation is highly detailed, with many notes beamed together. The system concludes with a final note on the fourth staff.



3.

Handwritten musical notation on four staves. The first staff features a treble clef and a key signature of one sharp (F#). It contains several measures of music with complex, overlapping notes and rests. The second staff continues the melody with similar complexity. The third staff uses a different clef, possibly a soprano or alto clef, and shows a more rhythmic pattern. The fourth staff uses a bass clef and contains dense, overlapping notes.

Handwritten musical notation on four staves. The first staff has a treble clef and a key signature of one sharp (F#). It includes some text above the notes: "p. p. p. p." and "p. p. p. p.". The second staff continues the complex notation. The third staff uses a different clef and shows dense, overlapping notes. The fourth staff uses a bass clef and contains dense, overlapping notes.



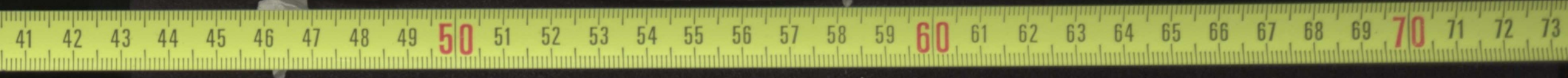
Handwritten musical notation on a five-line staff. The notation includes various note values, rests, and dynamic markings such as *p*, *b*, and *pp*. The music is written in a cursive, historical style.

Handwritten musical notation on a five-line staff, continuing the piece. It features complex rhythmic patterns and dense note clusters, characteristic of Baroque or Classical era manuscript notation.

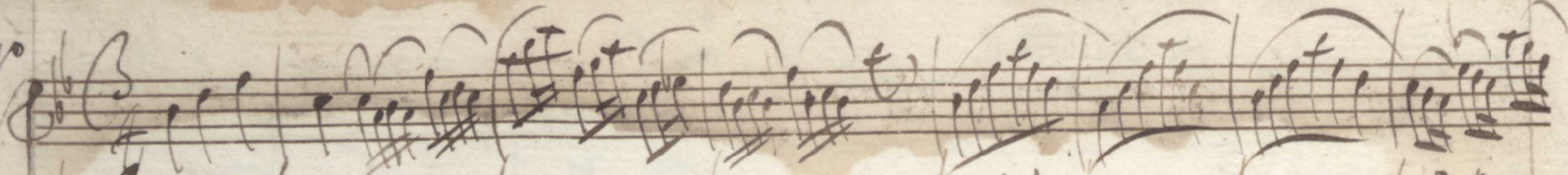


Handwritten musical notation on a five-line staff. The notation includes various note values, rests, and some scribbled-out passages. A small '6.' is written above the first measure. The paper shows signs of age and staining.

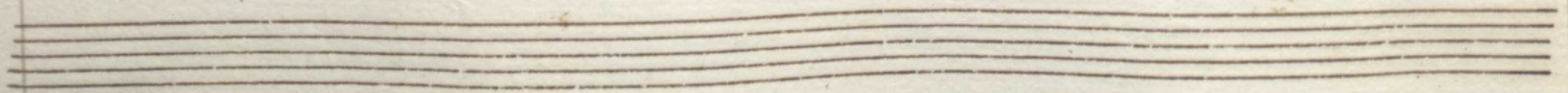
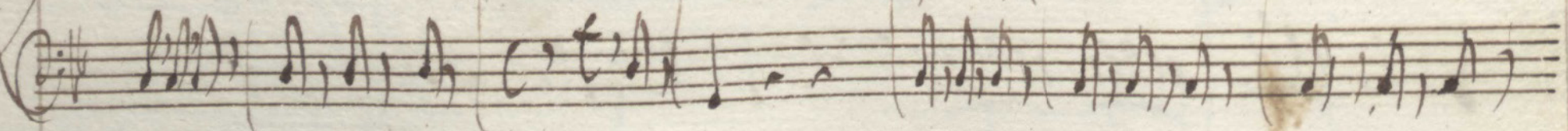
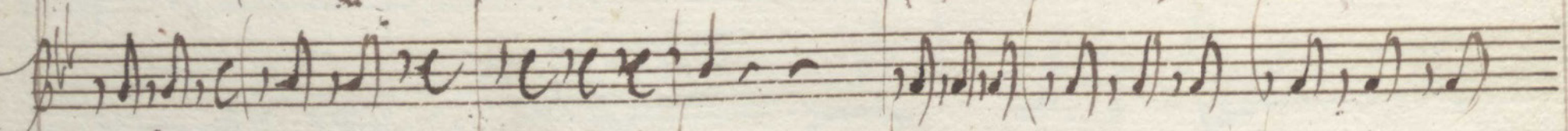
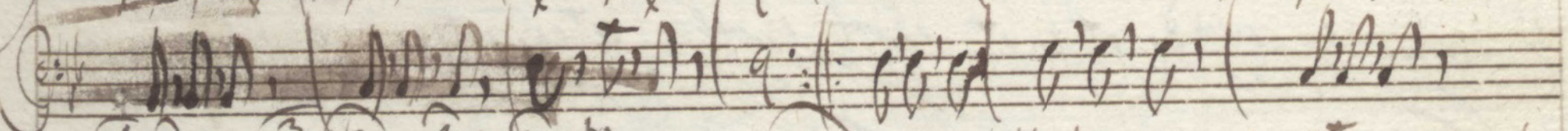
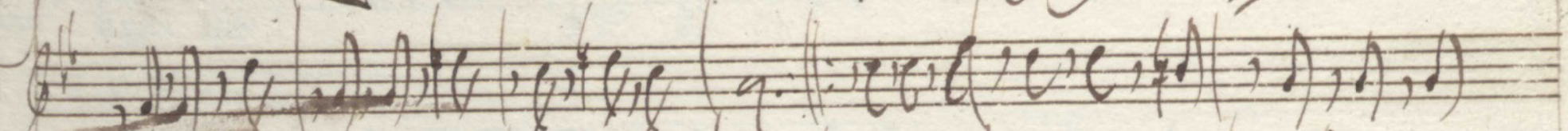
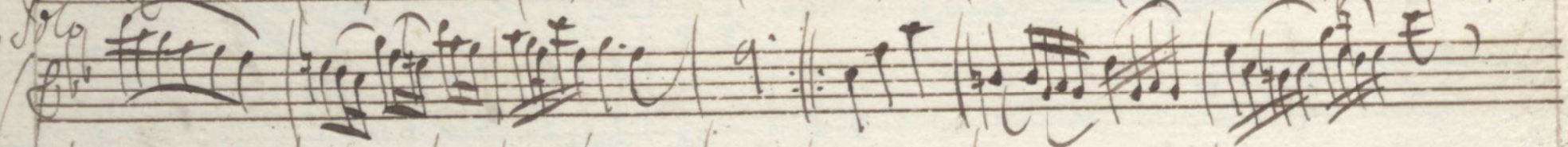
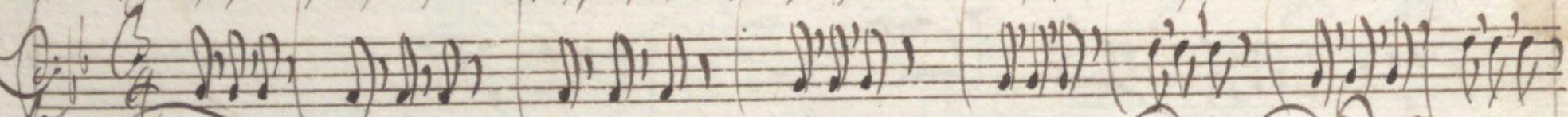
Handwritten musical notation on a five-line staff. The notation includes various note values, rests, and some scribbled-out passages. A small '72' is written above the second measure. The paper shows signs of age and staining.



*Caro*



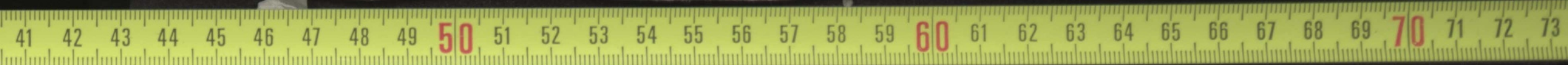
*Fagotto*





Handwritten musical notation on four staves. The first staff contains dense, complex rhythmic patterns. The second and third staves contain rhythmic notation with vertical stems and horizontal lines. The fourth staff is mostly blank with some diagonal lines.

Handwritten musical notation on four staves. The first staff contains rhythmic notation with some slurs. The second and third staves contain rhythmic notation with vertical stems and horizontal lines. The fourth staff is mostly blank with some diagonal lines.



*Allegro*

*Allegro*

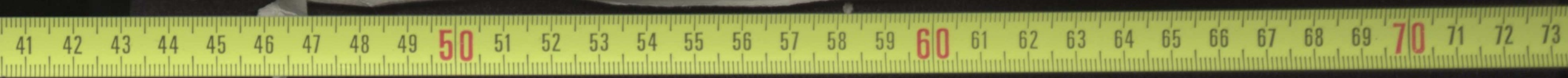
*Allegro*

*Allegro*

Handwritten musical notation on four staves. The first staff contains a complex melodic line with many beamed notes and slurs. The second staff has fewer notes, including some with stems pointing downwards. The third staff begins with a treble clef and contains several measures of music, ending with the handwritten text "con il Ballo". The fourth staff contains sparse notes and rests.

Handwritten musical notation on four staves. The first staff is very dense with many beamed notes and slurs. The second staff has several notes with stems pointing downwards. The third staff is mostly empty with some faint markings. The fourth staff contains several notes and rests. There is a large, dark scribble on the right side of the second and third staves.

Four empty musical staves at the bottom of the page.



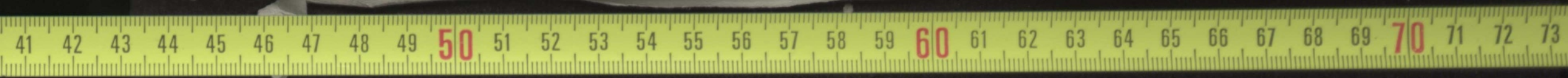
Handwritten musical notation on four staves. The notation is dense and appears to be a complex piece of music, possibly a lute or guitar tablature, given the frequent use of vertical lines and clusters of notes. The first staff begins with a treble clef and a key signature of one sharp (F#). The notation is written in a cursive, historical style.

Handwritten musical notation on four staves. The notation is dense and appears to be a complex piece of music, possibly a lute or guitar tablature, given the frequent use of vertical lines and clusters of notes. The first staff begins with a treble clef and a key signature of one flat (Bb). The notation is written in a cursive, historical style.



Handwritten musical notation on a five-line staff. The notation includes various note values, rests, and bar lines. The first staff contains several measures of music, with some notes appearing to be beamed together. The second staff continues the notation, showing a mix of note values and rests. The third staff is labeled "mit Bass" (with Bass) and contains a series of notes, some of which are beamed together. The fourth staff continues the notation, showing a mix of note values and rests.

Handwritten musical notation on a five-line staff. The notation includes various note values, rests, and bar lines. The first staff contains several measures of music, with some notes appearing to be beamed together. The second staff continues the notation, showing a mix of note values and rests. The third staff is labeled "mit Bass" (with Bass) and contains a series of notes, some of which are beamed together. The fourth staff continues the notation, showing a mix of note values and rests.



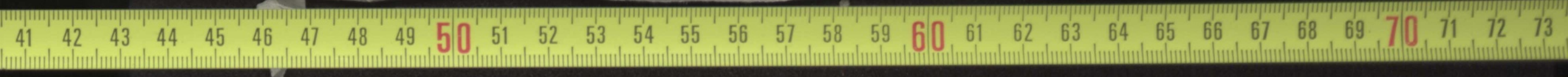
Handwritten musical notation on a five-line staff. The notation is dense and includes several triplets, indicated by a '3' above the notes. The notes are mostly eighth and sixteenth notes, with some beamed together. The staff is part of a larger system, as indicated by the bracket on the left.

Handwritten musical notation on a five-line staff. The notation is dense and includes several triplets, indicated by a '3' above the notes. The notes are mostly eighth and sixteenth notes, with some beamed together. The staff is part of a larger system, as indicated by the bracket on the left. Below the staff, the text "in Adagio" is written in cursive.



Handwritten musical notation on a system of four staves. The notation is dense and includes various rhythmic values, accidentals, and some scribbled-out passages.

Handwritten musical notation on a second system of four staves. This system includes some legible notes and rests, with a handwritten note "can it be." written in the third staff.



Handwritten musical notation on three staves. The notation is dense and somewhat obscured by overlapping lines and cancellations. The first staff begins with a treble clef and a key signature of one flat. The notes are written in a cursive, historical style. There are several instances of crossed-out notes and lines, particularly in the first two staves.

Handwritten musical notation on three staves. The notation is less dense than the first system. The first staff begins with a treble clef and a key signature of one flat. The notes are more clearly defined. A large, stylized signature "fin" is written across the second and third staves. There are some cancellations and corrections in the first staff of this system.

