

11
72
1805/1806.4



VIII SONATES

À

Deux Violons
& Basse-Continue.

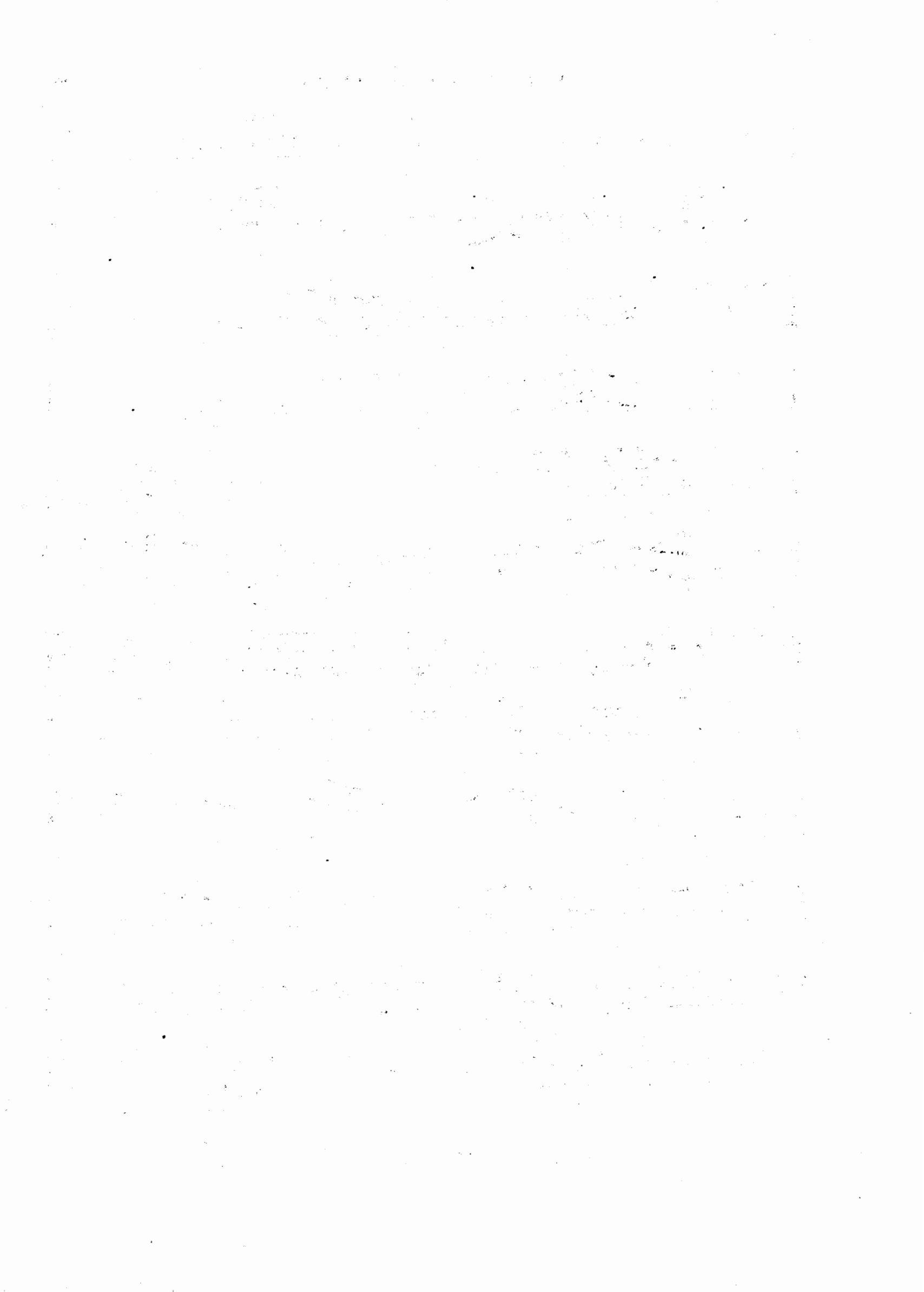
*Composées
par*

C. A. CAMPIONI,

*Musicien de La Chambre de
Sa Majesté Royale de Sardaigne &c. &c. &c.*

OEUVRE QUATRIEME.

À AMSTERDAM chez J. J. HUMMEL,
Marchand & Imprimeur de Musique.



S E C O N D O .

Musical score for the first section of the piece, consisting of 10 staves of music in G major and 2/4 time. The music features intricate sixteenth-note patterns and dynamic markings such as 'P' and 'F'. The section concludes with a double bar line.

Pianiss.

Menuet non Presto.

Musical score for the second section, "Menuet non Presto", consisting of 10 staves of music in G major and 3/4 time. The tempo is marked "non Presto". The music features a mix of eighth and sixteenth notes with dynamic markings "P" and "F". The section concludes with a double bar line.

SECONDO.

SONATA II

Adagio.

Allegro Moderato.

SECONDO.

The first system of the 'SECONDO' section consists of five staves of music. The first staff begins with a treble clef, a key signature of one sharp (F#), and a common time signature (C). The music is written in a single melodic line. The second staff includes dynamic markings 'P' (piano) and 'F' (forte) and contains a triplet of eighth notes. The third staff features a trill (tr) and a fermata. The fourth staff includes a 'P' marking and a fermata. The fifth staff concludes the system with a double bar line and repeat dots.

The second system of the 'SECONDO' section consists of one staff of music. It begins with a treble clef, a key signature of one sharp (F#), and a common time signature (C). The music is written in a single melodic line. It includes a triplet of eighth notes and a fermata. The system concludes with a double bar line and repeat dots.

Menuet.

The 'Menuet' section consists of seven staves of music. The first staff begins with a treble clef, a key signature of one sharp (F#), and a common time signature (C). The music is written in a single melodic line. The second staff includes a trill (tr) and a fermata. The third staff includes a fermata. The fourth staff includes a trill (tr) and a fermata. The fifth staff includes a trill (tr) and a fermata. The sixth staff includes a trill (tr) and a fermata. The seventh staff concludes the section with a double bar line and repeat dots.

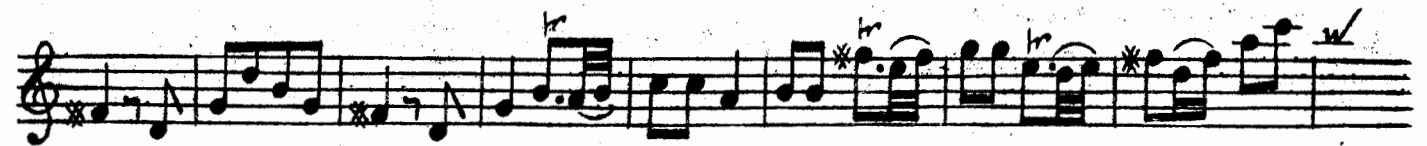
SECONDO.

SONATA III

Adagio.



Allegro.



SECONDO.

The first section of the Minuet consists of five staves of music. The first staff begins with a treble clef and a 7/8 time signature. The second staff includes dynamic markings 'P' and 'F'. The third staff features a 'Dor' marking above a note. The fourth staff ends with a double bar line and repeat dots. The fifth staff is marked with a 3/8 time signature and includes a triplet marking.

Minuet.

The second section of the Minuet consists of seven staves of music. The first staff has a 'P' dynamic marking. The second staff has an 'F' dynamic marking. The third staff has a 'P' dynamic marking. The fourth staff has an 'F' dynamic marking. The fifth staff has a 'P' dynamic marking. The sixth staff has an 'F' dynamic marking. The seventh staff has 'P' and 'F' dynamic markings. The section concludes with a double bar line and repeat dots.

S E C O N D O .

SONATA IV

Adagio.

The Adagio section consists of ten measures. It begins with a treble clef, a key signature of three sharps (F#, C#, G#), and a 3/4 time signature. The melody is characterized by flowing eighth and sixteenth notes, often beamed together. Dynamic markings 'P' (piano) and 'F' (forte) are placed below the notes. A first ending bracket is present at the end of the section, leading to a repeat sign.

Allegro.

The Allegro section consists of ten measures. It begins with a treble clef, the same key signature of three sharps, and a 2/4 time signature. The tempo is marked 'Allegro'. The melody is more rhythmic, featuring eighth and sixteenth notes with frequent rests. Dynamic markings 'P' and 'F' are used. A first ending bracket is also present at the end of the section.

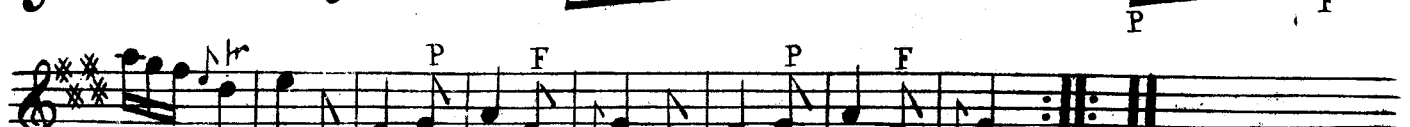
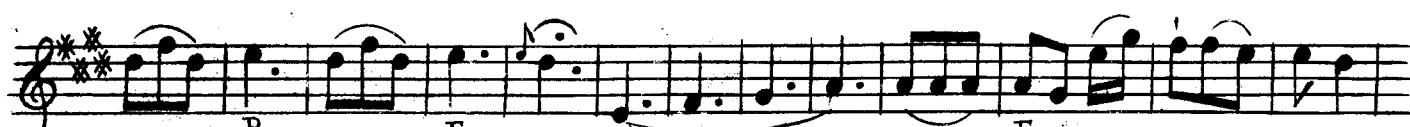
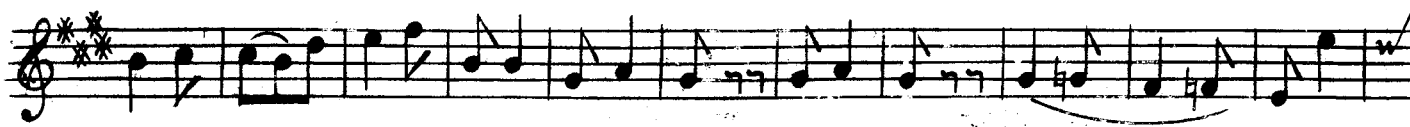
SECONDO.



Sforz.



Menuetto Comodico.



SECONDO.

SONATA V

Adagio.

Allegro.

SECONDO.

The first section of the piece consists of six staves of music. The notation includes various rhythmic values, accidentals, and dynamic markings. The first staff begins with a treble clef and a key signature of one flat. The second staff contains dynamic markings 'P' and 'F'. The third staff contains a dynamic marking 'F'. The fourth staff contains dynamic markings 'P' and 'F'. The fifth staff contains a dynamic marking 'P'. The sixth staff concludes with a double bar line and repeat dots.

Menuet.

The second section, titled 'Menuet', consists of six staves of music. The first staff begins with a treble clef, a key signature of one flat, and a 3/4 time signature. The notation includes various rhythmic values, accidentals, and dynamic markings. The second staff contains a dynamic marking 'P'. The third staff contains dynamic markings 'F' and 'P'. The fourth staff contains a dynamic marking 'F'. The fifth staff contains dynamic markings 'P' and 'Cres.'. The sixth staff contains dynamic markings 'F' and 'P' and concludes with a double bar line and repeat dots.

SECONDO.

SONATA VI

Adagio Sempre piano.

The first movement is in 3/4 time and consists of 14 staves of music. It begins with a treble clef and a 3/4 time signature. The tempo is marked 'Adagio' and the dynamics are 'Sempre piano'. The music features a series of flowing sixteenth-note passages, often with slurs and accents. There are first and second endings marked with '1' and '2'. The movement concludes with a double bar line and repeat signs.

The second movement is in 2/4 time and consists of 10 staves of music. It begins with a treble clef and a 2/4 time signature. The tempo is marked 'Allegro'. The music is characterized by rapid sixteenth-note runs and rhythmic patterns. There are first and second endings marked with '1' and '2'. The movement concludes with a double bar line and repeat signs.

SECONDO.

The first system of the 'SECONDO' section consists of five staves of treble clef music. The first staff begins with a treble clef, a key signature of one flat (B-flat), and a 3/4 time signature. The music features a series of eighth-note patterns, often beamed in groups of three or four. There are several slurs and accents throughout. The second staff continues the eighth-note patterns with some sixteenth-note runs. The third staff shows more complex rhythmic figures, including some sixteenth-note runs. The fourth staff features a prominent sixteenth-note run with a slur. The fifth staff concludes the system with a double bar line and repeat signs.

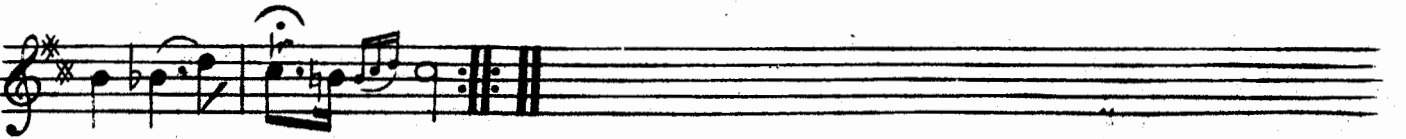
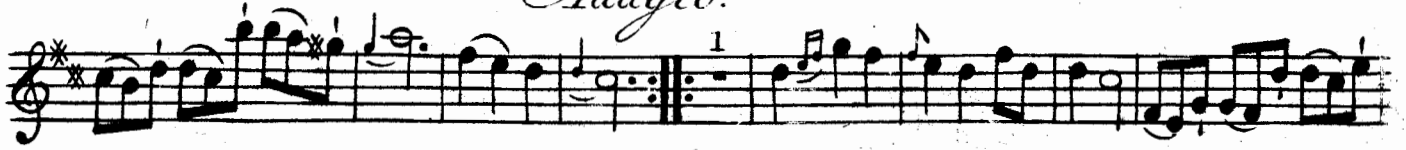
Menuet.

The second system, titled 'Menuet.', consists of ten staves of treble clef music in 3/4 time. The first staff starts with a treble clef, a key signature of one flat, and a 3/4 time signature. It features a series of eighth notes with a triplet of eighth notes marked with a '3' above it. The second staff continues with eighth notes and includes dynamic markings 'P' (piano) and 'F' (forte). The third staff has a triplet of eighth notes and dynamic markings 'P' and 'F'. The fourth staff includes a triplet of eighth notes and a dynamic marking 'P'. The fifth staff features a triplet of eighth notes and dynamic markings 'F' and 'P'. The sixth staff has a triplet of eighth notes and dynamic markings 'F' and 'P'. The seventh staff includes a triplet of eighth notes and dynamic markings 'P' and 'F'. The eighth staff features a triplet of eighth notes and dynamic markings 'F' and 'P'. The ninth staff has a triplet of eighth notes and dynamic markings 'P' and 'F'. The tenth staff concludes the system with a double bar line and repeat signs.

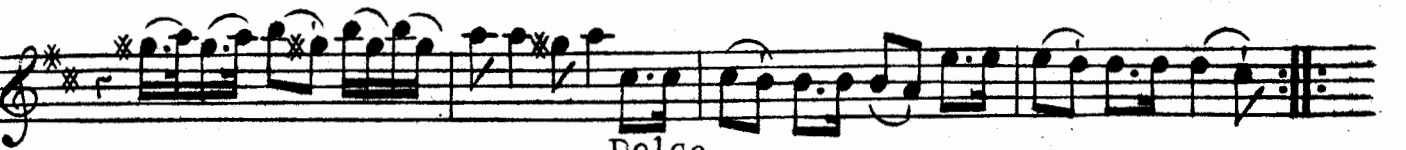
S E C O N D O .

SONATA VII

Adagio.



Allegretto.



Dolce



F



SECONDO.

Dolce

F

Dolce

This section consists of ten staves of music in G major. It begins with a treble clef and a key signature of one sharp (F#). The first staff contains a series of sixteenth-note runs with trills and ornaments. The word "Dolce" is written below the first staff. A dynamic marking "F" (forte) appears at the end of the first staff. The second staff features a triplet of sixteenth notes. The third staff includes a trill and a triplet. The fourth staff has a triplet and a trill. The fifth staff contains a trill and a triplet. The sixth staff has a trill and a triplet. The seventh staff features a trill and a triplet. The eighth staff has a trill and a triplet. The ninth staff contains a trill and a triplet. The tenth staff ends with a double bar line and repeat signs.

Menuet.

P F P

F

This section is titled "Menuet." and consists of ten staves of music in G major. It begins with a treble clef, a key signature of one sharp (F#), and a 3/4 time signature. The first staff contains a series of eighth-note runs. The word "Menuet." is written below the first staff. The second staff features a trill and a triplet. The third staff includes a trill and a triplet. The fourth staff has a trill and a triplet. The fifth staff contains a trill and a triplet. The sixth staff features a trill and a triplet. The seventh staff has a trill and a triplet. The eighth staff contains a trill and a triplet. The ninth staff features a trill and a triplet. The tenth staff ends with a double bar line and repeat signs. Dynamic markings "P" (piano), "F" (forte), and "P" are placed below the fourth, fifth, and sixth staves respectively. A dynamic marking "F" is placed below the eighth staff.

SECONDO.

SONATA VII

Adagio.

Poc. F P Poc. F

P F P

F

Poc. F

P Poc. F F

Poc. F

Poc. F

Allegro.

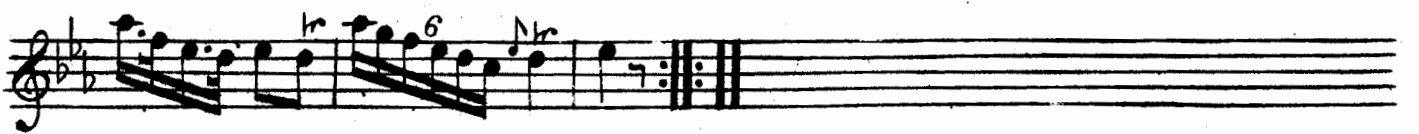
P

F

P F

P

SECONDO.



Menuet.

