

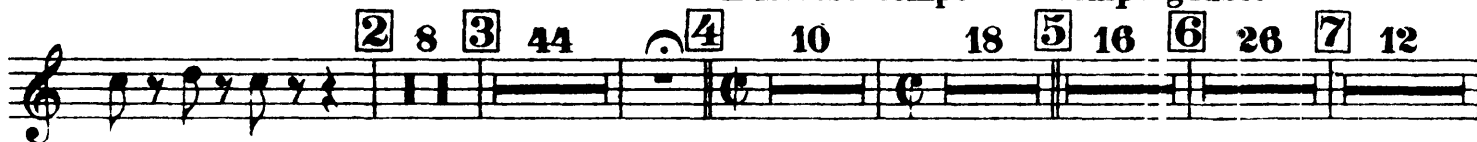
Peter Ilyich Tchaikovsky
Piano Concerto No. 2 in G Major, Op. 44
1.

Tromba I in D.

Allegro brillante e molto vivace.



L'istesso tempo. Tempo giusto.



10 *Più mosso.*



11 *Tempo I.*



Tchaikovsky — Piano Concerto No. 2 in G Major, Op. 44

7

Tromba I in D.

Tempo giusto.

12 24 13 44

Coral *ff*

15 10 Viol. I. 11

ff

7 17 10 *Cadenza*

(Piano Solo)

Tempo I.

ff

18

ff

Tromba I in D.

L'istesso tempo.

19 10 8 20 30 21 27 22 4

Corn 5 6 7

8 9 23 Più mosso. 11

ff

24 Tempo giusto.

ff

1 18 25 1 2 3

ff Più mosso.

Corn 1

ff

II.

Andante non troppo.

44 26 26 34 2 27 1 2

Viol. I.

1 1 1 1 1

pp cre - - scen - - do *mf* *meno f* di - -

mi - - nu - - en - - do

pp *pp* *pp*

6

pp *pp* *pp* *attacca*

III.

Tromba I in D.

Allegro con fuoco

19 **28** 25 26 27 28 **29** 3 15

ff Clar. I. *ff* *ff*

30 36 **31** 28 **32** 15 **33** 19 Ob. 20 21 22 23 horns 24 25

34 3 3 3 2 **35**

ff *ff* *ff* *ff* *ff*

7

36 31 Fl. **32** **37** 15 **38** 16 **39** 13 Clar. I. **40** 3

ff *ff* *ff* *ff*

21 **41** 14 Corni 15 16 **42** 34 **43** 28 **44** 23

ff *ff*

45 12 Corni **46** 1 1 7 **47** 28

f *f* *ff*

48 L'istesso tempo. 8 16 **49** 23 24 4

ff *fff* *ff*

50 1 1 *sempre ff*

f *ff*

1 1

Peter Ilyich Tchaikovsky
Piano Concerto No. 2 in G Major, Op. 44

I

Tromba II in D.

Allegro brillante e molto vivace.

Musical score for Tromba II in D, measures 1-10. The score is written in treble clef with a common time signature (C). It begins with a forte (*f*) dynamic. The first line contains measures 1-4. The second line contains measures 5-8, with first and third endings marked above measures 7 and 8 respectively. The third line contains measures 9-10, with first and second endings marked above measures 9 and 10. Measure 10 includes a first ending bracket and a repeat sign. The tempo marking *L'istesso tempo.* is placed above measure 10.

Tempo giusto.

Musical score for Tromba II in D, measures 11-15. The score is written in treble clef with a common time signature (C). It begins with a forte (*f*) dynamic. Measures 11-15 are marked with boxed numbers 5, 6, 7, 8, and 9 above the staff. A *Cor.* (Corno) part is indicated below measure 11. The bottom line of the staff shows the notes for the Corno part, with measures 4-8 marked below.

Più mosso.

Musical score for Tromba II in D, measures 16-19. The score is written in treble clef with a common time signature (C). It begins with a fortissimo (*ff*) dynamic. Measure 16 is marked with a boxed number 10 above the staff. The tempo marking *Più mosso.* is placed above measure 16. The score ends with a repeat sign and a first ending bracket above measure 19.

Tempo I.

Musical score for Tromba II in D, measures 20-23. The score is written in treble clef with a common time signature (C). It begins with a fortissimo (*ff*) dynamic. Measure 20 is marked with a boxed number 11 above the staff. The tempo marking *Tempo I.* is placed above measure 20. The score ends with a repeat sign and a first ending bracket above measure 23.

Tchaikovsky — Piano Concerto No. 2 in G Major, Op. 44

2

Tromba II in D.

Tempo giusto.

12 24 13 44 1 2 14

Cor. *ff*

15 10 11 16

Viol. I. *ff*

7 17 10

Cadenza
Piano Solo.

Tempo I.

ff

18

Tromba II in D.

L'istesso tempo.

19 10 8 20 30 21 27 22 7 8 9

Cor.

23 Più mosso.

ff

10 24 Tempo giusto.

ff

ff

Più mosso.

18 25 1 Cor.

ff

II

Andante non troppo.

44 26 26 34 2

cadenza

27 1 2 1 1 1 1

Viol. I.
pp cre - scen - do

menof 3 di - mi - nu - en3 - do 14

pp
attaca

III

Tromba II in D.

Allegro con fuoco.

19 **28** 25 Clar. **29** 3 15
26 27 28 ff ff ff

30 36 **31** 28 **32** 15 **33** 19 Ob. 20 21 22 23 24 25
20 21 22 23 24 25

34 3 3 3 2 **35**
ff ff ff ff ff

36 31 Fl. **37** 15 **38** 16 **39** 13 Clar. I. **40** 3
32 14 15 16 ff

21 **41** 14 Cor. **42** 34 **43** 28 **44** 23
15 16 ff

45 12 Cor. **46** 1 1 7 **47** 28
13 14 15 f f

48 L'istesso tempo. 8 16 **49** 23 24 4
16 **49** 23 24 4

50 ff ff ff Cor. ff
sempre ff

1 2 2 1 5 6 7 8
1 1