

Peter Ilyich Tchaikovsky
Piano Concerto No. 2 in G Major, Op. 44
I.

Timpani G.D.E.

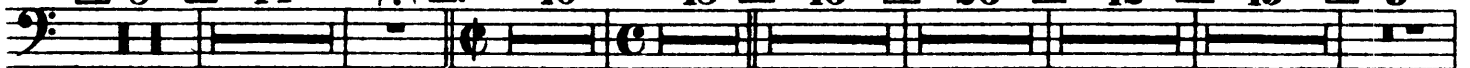
Allegro brillante e molto vivace.



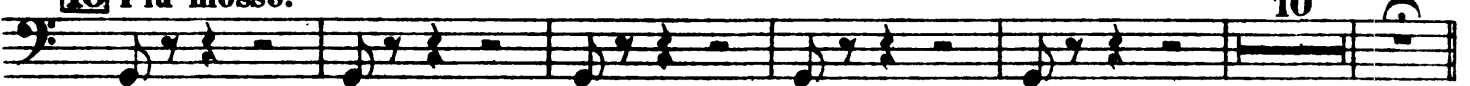
Muta E in C.

Lo stesso tempo. Tempo giusto.

2 8 3 44 4 10 18 5 16 6 26 7 12 8 15 9 3



10 Più mosso.



11 Tempo I.



Tchaikovsky — Piano Concerto No. 2 in G Major, Op. 44

2

Timpani.

1 1 1 **12** 1 1 1

ff ff ff f mf f mf

Muta Cin B, D in Es.

17 **13** 44 **14**

f ff

Bassi 1 2

Muta Bin A, Es in D.

15 12 **16** 2

ff f

1 2 3 4 5 6 7 8 **17** 9

f-p pp

Cadenza.

Piano Solo

Tempo I.

18

Timpani.

1 4

ff

Lo stesso tempo.

19 10 8 20 30 21 27 22 7

Corni

23 Più mosso.

23 10

ff

24 Tempo giusto.

24 23

ff

Più mosso.

18 25 1 2 3

Corni

25 24

ff

II.

Andante non troppo.

44 26 26 34

Cadenza.

27 9

Tromba

mf

13 13

pp *attacca*

III.

Timpani.

Allegro con fuoco.

Musical score for Timpani, measures 1-47. The score is written in bass clef with a 2/4 time signature. It includes staves for Bass, Clarinet I (Clar. I.), Flute (Fl.), and Trombone. Measures are numbered and boxed: 7, 11, 28, 25, 29, 3, 30, 36, 31, 28, 32, 15, 33, 19, 20, 21, 22, 23, 24, 25, 34, 3, 3, 3, 3, 35, 36, 30, 31, 37, 7, 38, 16, 39, 13, 40, 3, 7, 13, 41, 14, 42, 34, 43, 28, 44, 23, 45, 15, 16, 46, 14, 15, 16, 47, 1, 27. Dynamic markings include *ff*, *f*, *mf*, and *p*. There are first endings marked with '1' and repeat signs.

Poco più mosso.

Musical score for Timpani, measures 48-50. The score is written in bass clef. Measure 48 is marked "Eistesso tempo." It includes staves for Bass and Horn. Measures are numbered and boxed: 48, 8, 16, 49, 14, 15, 16, 1, 2, 3, 4, 5, 6, 7, 8, 9, 4, 50, 1, 1, 1, 1, 1, 1, 1, 8, 1, 1. Dynamic markings include *ff* and *mf*. There are first endings marked with '1' and repeat signs.

cre - scen - do

sempre *ff*