

# Sonate 2

De l'Opus 30

Johann Christian **SCHICKHARDT**

Réalisation et transcription

Pierre Montreuille

(Des ornements et articulations  
ont été ajoutés par le transcripteur)

Fl **Allegro**

3

6

8

11

13

15 **Adagio**

16

20

23

24 **Allegro**

26

1. 2.

30

34

38 **Gigue**

45

51

58

64

70

76

82 **Menuet**

90

98

# Sonate 2

De l'Opus 30

Johann Christian **SCHICKHARDT**

*Réalisation et transcription*

*Pierre Montreuille*

(Des ornements et articulations  
ont été ajoutés par le transcripteur)

**Allegro**

Htbs

8

14

15 **Adagio**

19

24 **Allegro**

31

37

38 **Gigue**

45



# Sonate 2

De l'Opus 30

Johann Christian **SCHICKHARDT**

*Réalisation et transcription*  
*Pierre Montreuille*

(Des ornements et articulations  
ont été ajoutés par le transcripteur)

**Allegro**



15 **Adagio**



24 **Allegro**



38 **Gigue**

Musical staff for Gigue, measures 38-45. The key signature is one sharp (F#) and the time signature is 3/4. The melody consists of eighth and sixteenth notes with various rests.

Musical staff for Gigue, measures 46-52. The melody continues with eighth and sixteenth notes, ending with a repeat sign.

Musical staff for Gigue, measures 53-61. The melody features eighth and sixteenth notes with some rests.

Musical staff for Gigue, measures 62-69. The melody consists of eighth and sixteenth notes with rests.

Musical staff for Gigue, measures 70-76. The melody features eighth and sixteenth notes with some rests.

Musical staff for Gigue, measures 77-81. The melody consists of eighth and sixteenth notes, ending with a repeat sign.

82 **Menuet**

Musical staff for Menuet, measures 82-93. The key signature is one sharp (F#) and the time signature is 3/4. The melody consists of quarter and eighth notes.

Musical staff for Menuet, measures 94-100. The melody continues with quarter and eighth notes, ending with a repeat sign. A second ending bracket labeled '2' is shown above measures 94-96.

# Sonate 2

De l'Opus 30

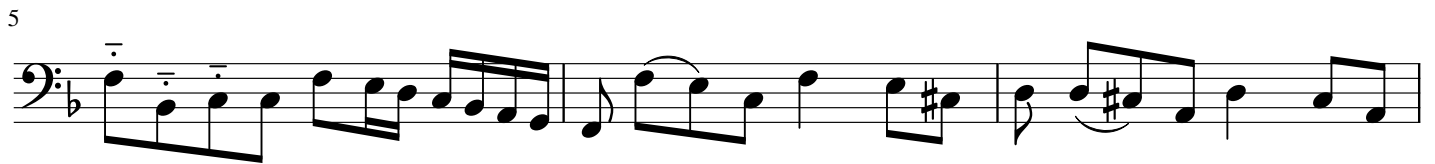
Johann Christian **SCHICKHARDT**

*Réalisation et transcription*

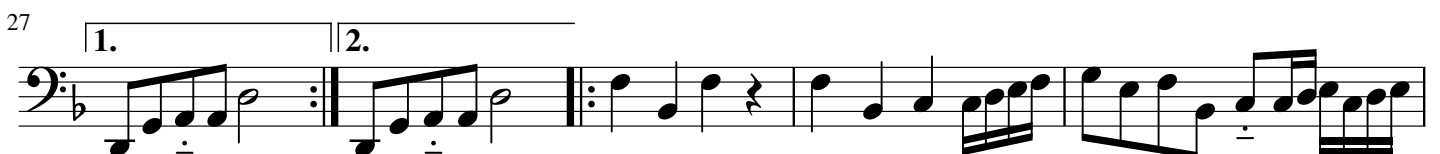
*Pierre Montreuille*

(Des ornements et articulations  
ont été ajoutés par le transcripteur)

**Allegro**



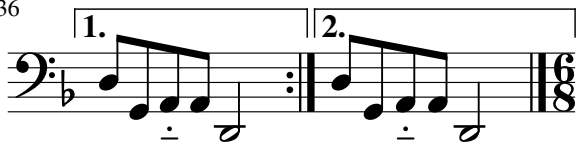
15 **Adagio**



32



36



38

**Gigue**



42



49



57



64

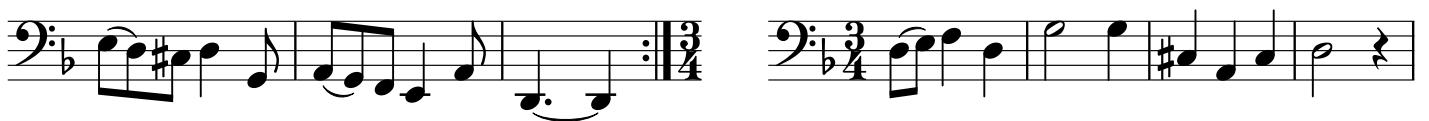


71

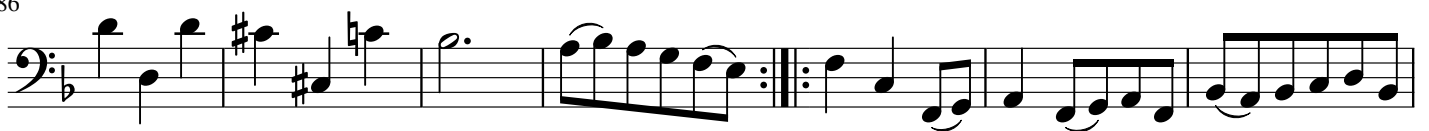


79

**Menuet**



86



93



100

