

Camille Saint-Saens  
Carnival of the Animals

CONTREBASSE

Introduction

N° 1 et Marche Royale du Lion

Andante maestoso

1<sup>er</sup> Piano 8<sup>va</sup>

C. BASSE

*p* *cresc.*

1

Piano *ff*

2

Più allegro C. BASSE *ff*

3

4

2<sup>d</sup> Piano *ff*

3

4

5

1<sup>er</sup> Piano C. BASSE pizz *ff*

2

5

6

1<sup>er</sup> Piano C. BASSE arco *ff*

2

6

1<sup>er</sup> Piano C. BASSE arco *ff*

2

7

1<sup>er</sup> Piano C. BASSE arco *ff*

2

8

1<sup>er</sup> Piano C. BASSE arco *ff*

2

8

1<sup>er</sup> Piano C. BASSE arco *ff*

2

8

Saint-Saens — Carnival of the Animals

CONTREBASSE

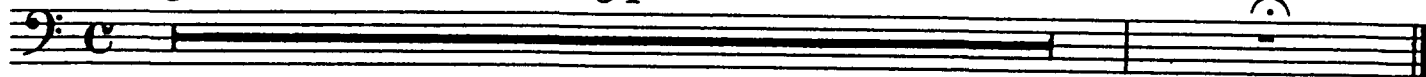
2

N° 2

Poules et Coqs

Allegro moderato

34



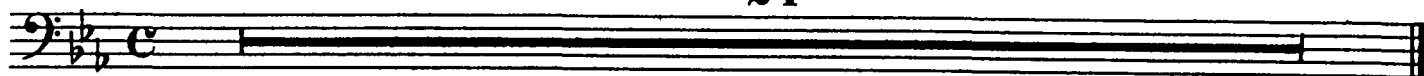
N° 3

Hémiones

(Animaux véloces)

Presto furioso

24



N° 4

Tortues

Andante maestoso

1<sup>er</sup> Piano

C. BASSE



N° 5

L'Éléphant

Allegretto pomposo

2<sup>d</sup> Piano

C. BASSE SOLI



Saint-Saens — Carnival of the Animals

CONTREBASSE

Musical score for Contrabass, measures 1-5. The score is in bass clef with a key signature of two flats (B-flat and E-flat). Measure 1 starts with a dynamic marking of *mf*. Measure 2 contains a circled number '2'. Measure 3 contains a circled number '3'. Measure 4 contains a circled number '4' and a dynamic marking of *ff*. Measure 5 ends with a fermata. The music consists of eighth and sixteenth notes with various articulations like slurs and accents.

N° 6

Kangourous

Moderato

Musical score for Kangourous, measures 1-5. The score is in bass clef with a key signature of two flats. It features a series of triplets and a quintuplet. Measure 1 has a circled number '1'. Measure 2 has a circled number '2'. Measure 3 has a circled number '5'. Measure 4 has a circled number '3'. Measure 5 ends with a fermata. The tempo is marked 'Moderato'.

N° 7

Aquarium

Andantino

39

Musical score for Aquarium, measures 1-5. The score is in bass clef with a key signature of two flats. It consists of a single long note with a fermata. The tempo is marked 'Andantino'.

N° 8

Personnages à longues oreilles

Tempo ad lib

24

Musical score for Personnages à longues oreilles, measures 1-5. The score is in bass clef with a key signature of two flats. It consists of a single long note with a fermata. The tempo is marked 'Tempo ad lib'.

N° 9

Le Coucou au fond des bois

Andante

42

Musical score for Le Coucou au fond des bois, measures 1-5. The score is in bass clef with a key signature of three sharps (F#, C#, G#). It consists of a single long note with a fermata. The tempo is marked 'Andante'.

Saint-Saens — Carnival of the Animals

CONTREBASSE

4

N° 10

Volière

Moderato grazioso  
pizz

pizz

*p*

1 2

1 3

1 1 4

*pp*

N° 11

Pianistes

Allegro moderato

Piano

C. BASSE

1

3

arco  
*f*

Piano

C. BASSE

2

3

Piano

C. BASSE

3

Piano

C. BASSE

4

Piano

C. BASSE

*f*

*f*

*f*

*f*

Saint-Saens — Carnival of the Animals

CONTREBASSE

N° 12

Fossiles

Allegro ridicolo

ff

arco

1

2

pizz

2

arco

pizz

p

arco

2

2

2

2

4

p

3

2

pizz

ff

2

arco

2

pizz

4

Clarinete

5 C. BASSE  
pizz

p

6

6 velle

ff

C. BASSE  
arco

ff

N° 13

Le Cygne

Andantino grazioso

28

Saint-Saens — Carnival of the Animals

6

CONTREBASSE

N° 14

Final

Molto allegro

Piano

8--,

8--,

8--,

8--,

C. BASSE

1 pizz

2

3 arco

4

5 pizz

Saint-Saens — Carnival of the Animals

CONTREBASSE

6 arco  
*f*

7 Violon

C. BASSE Piano

C. BASSE  
*p*

8  
*cresc.*

9  
*f*

10

*ff*