

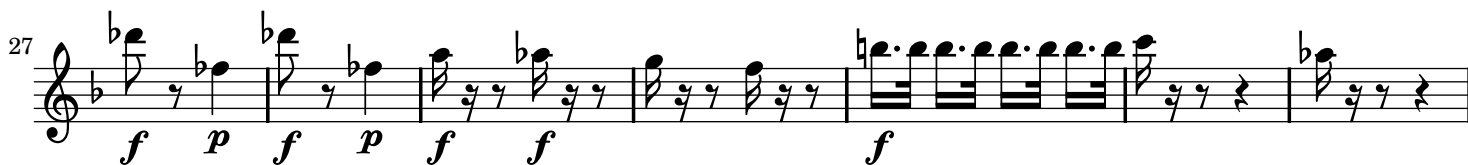
# Eduardo e Cristina

## Ouverture

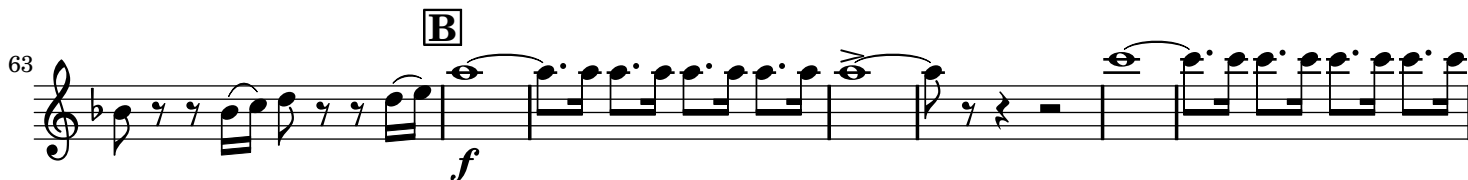
Clarinete 1 en LA

Giacchino ROSSINI

### Moderato



### Allegro Brillante



86 *p*

90 *f* *p* **C**

96

101

106

111

116

121

126

131 *f*

142 *f* *f* *f*

150 *f* 5

**D**

160 Musical staff 160-165: Treble clef, key signature of one flat. Measures 160-165. Dynamics: *p*. Includes slurs and accents.

166 Musical staff 166-173: Treble clef, key signature of one flat. Measures 166-173. Dynamics: *p*. Includes slurs and accents. Measure 173 has a '2' above it.

174 Musical staff 174-180: Treble clef, key signature of one flat. Measures 174-180. Includes slurs and accents.

181 Musical staff 181-187: Treble clef, key signature of one flat. Measures 181-187. Dynamics: *f*. Includes slurs and accents.

188 Musical staff 188-196: Treble clef, key signature of one flat. Measures 188-196. Includes slurs and accents.

197 Musical staff 197-201: Treble clef, key signature of one flat. Measures 197-201. Includes slurs and accents.

202 Musical staff 202-218: Treble clef, key signature of one flat. Measures 202-218. Dynamics: *p*. Includes slurs and accents. Measure 218 has a '12' above it. Section marker **E** is at the end.

219 Musical staff 219-225: Treble clef, key signature of one flat. Measures 219-225. Dynamics: *p*. Includes slurs and accents. Measure 221 has a '3' above it.

225

230

235

239

243

248

258

265

270