

Studenten-Music

Leipzig 1654

Johann Rosenmüller
c.1619 – 1684

Published by Johan Tufvesson.

Non-commercial copying welcome

Revision : 1.2

Studenten-Music

Leipzig 1654

Johann Rosenmüller

(c.1619–1684)

1-7 Paduan à 3

Tacet

8. Paduan à 5

6

11

16

21

26

29

33

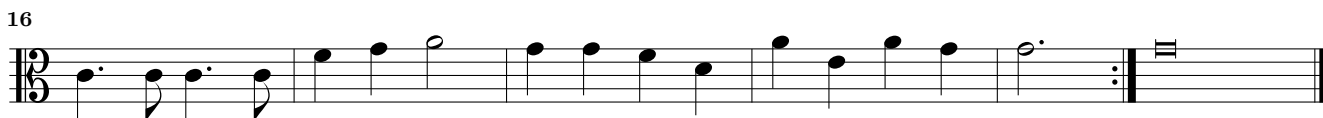
37

42

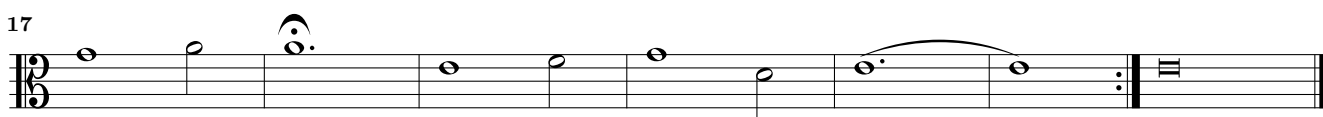
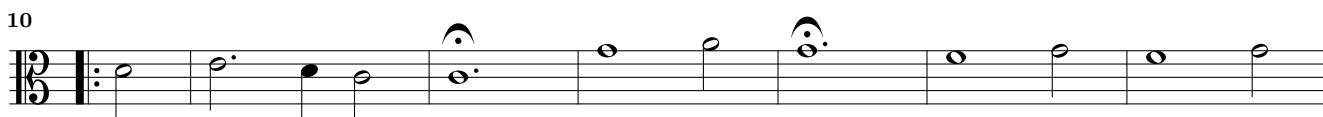
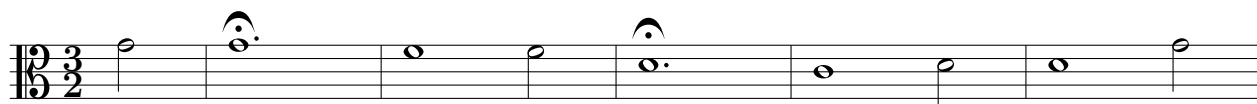
47

51

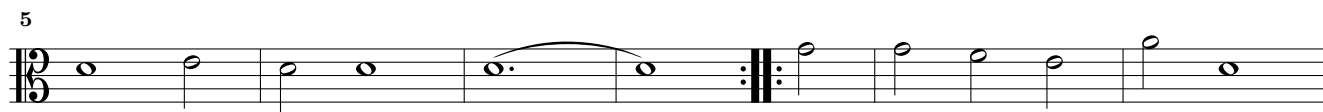
9. Alemanda



10. Courant Adagio



11. Courant Allegro



12. Alemanda



5



9



14



13. Courant



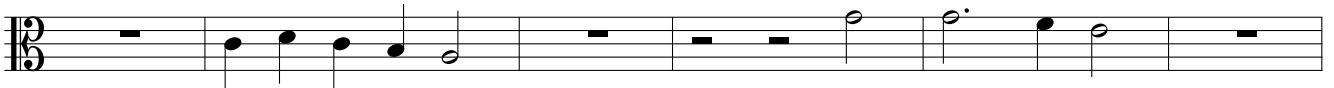
7



13



19



25



14. Ballo



4

Adagio

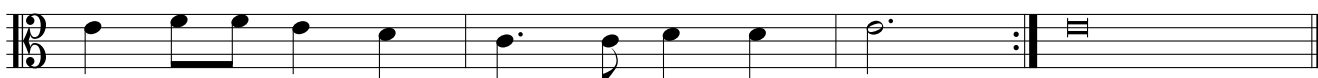


8

Allegro

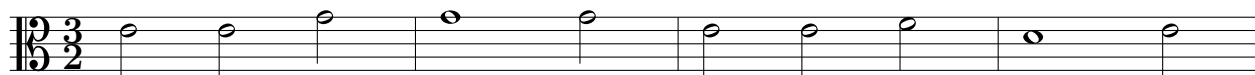


12



p

15. Sarabanda



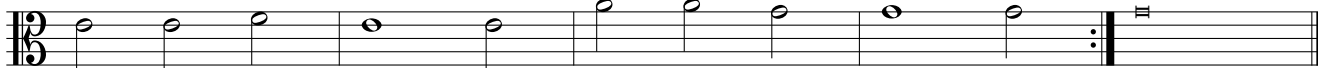
5



9



13



16. Paduan



6



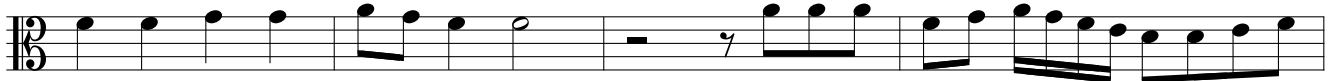
12



17



23



27



32



37



43



48



53



17. Alemanda

Musical score for 17. Alemanda, featuring a single staff in bass clef with a common time signature (C). The piece consists of 16 measures. The notation includes quarter notes, eighth notes, and half notes, with some slurs and repeat signs. Measure numbers 6, 10, and 16 are indicated on the left side of the staff.

18. Courant

Musical score for 18. Courant, featuring a single staff in bass clef with a 3/2 time signature. The piece consists of 19 measures. The notation includes quarter notes, half notes, and dotted notes, with some slurs and repeat signs. Measure numbers 6, 12, and 19 are indicated on the left side of the staff.

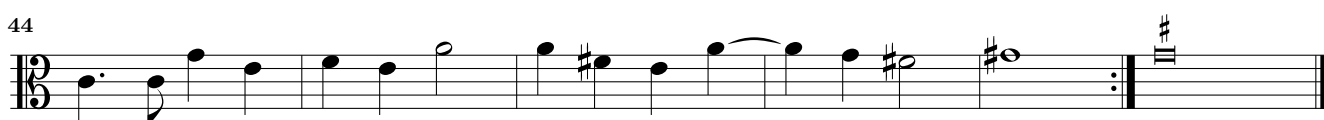
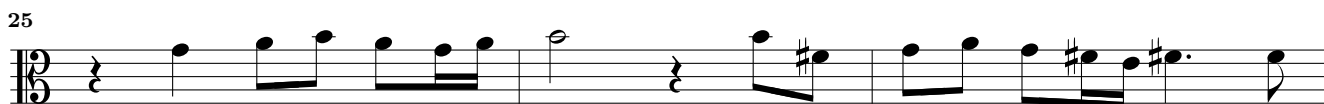
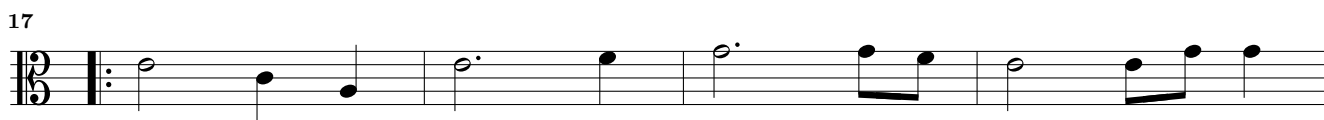
19. Ballo Adagio

Musical score for 19. Ballo Adagio, featuring a single staff in bass clef with a common time signature (C). The piece consists of 9 measures. The notation includes quarter notes, eighth notes, and half notes, with some slurs and repeat signs. Measure numbers 5 and 9 are indicated on the left side of the staff. The tempo marking *Allegro* is placed above the staff between measures 5 and 9.

20. Sarabanda

Musical score for 20. Sarabanda, featuring a single staff in bass clef with a 3/2 time signature. The piece consists of 13 measures. The notation includes quarter notes, half notes, and dotted notes, with some slurs and repeat signs. Measure numbers 7 and 13 are indicated on the left side of the staff.

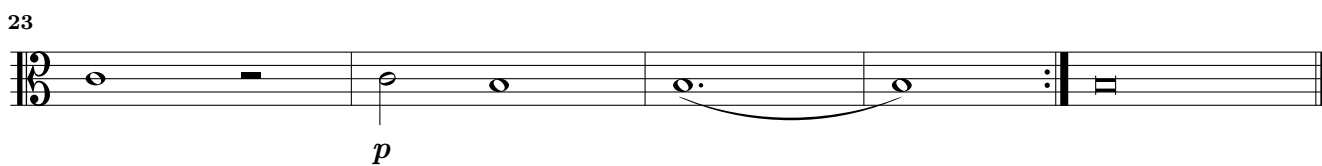
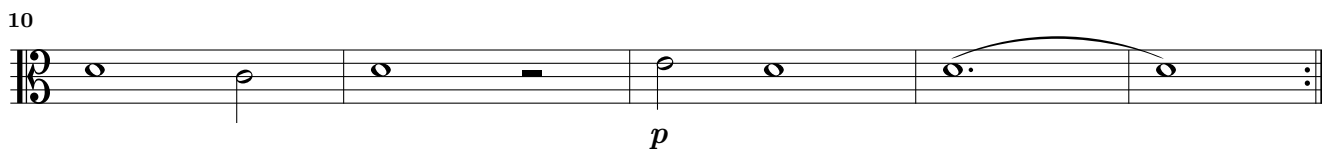
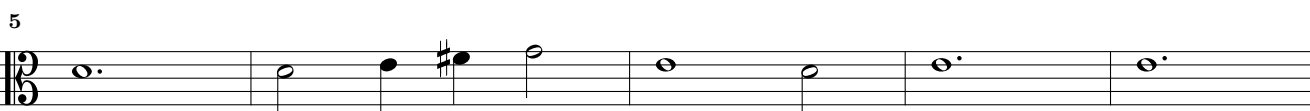
21. Paduan



22. Ballo



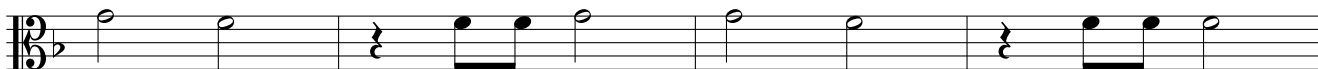
23. Courant



25. Alemanda



5



9



13



17



26. Courant



6



12



18



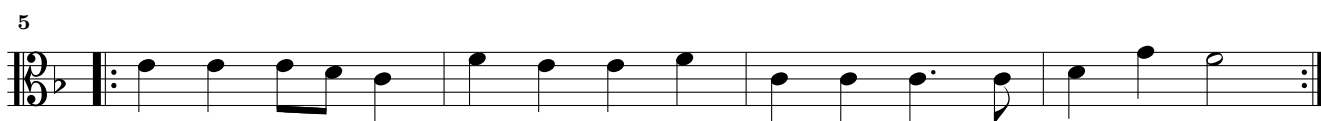
23



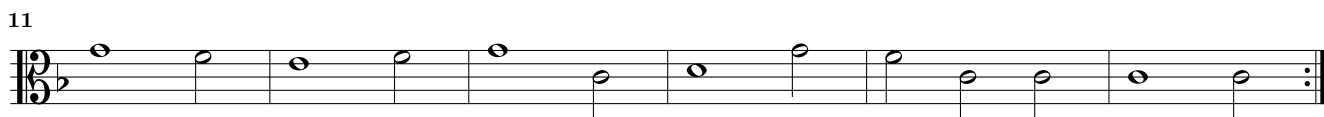
27. Alemanda

Studenten-Music – 29. Sarabanda – Altus

28. Ballo



29. Sarabanda



This page intentionally left blank.

31. Alemanda

Musical score for 31. Alemanda, Altus part, measures 1-13. The piece is in C major, common time (C), and 2/4 meter. It consists of 13 measures. The first measure starts with a treble clef and a common time signature. The melody is written in a single staff. The key signature has one sharp (F#). The piece ends with a double bar line and repeat dots.

32. Courant

Musical score for 32. Courant, Altus part, measures 1-17. The piece is in C major, 3/2 meter, and 2/4 time signature. It consists of 17 measures. The first measure starts with a treble clef and a 3/2 time signature. The melody is written in a single staff. The key signature has one sharp (F#). The piece ends with a double bar line and repeat dots.

33. Ballo *Allegro*

Musical score for 33. Ballo *Allegro*, Altus part, measures 1-5. The piece is in C major, common time (C), and 2/4 meter. It consists of 5 measures. The first measure starts with a treble clef and a common time signature. The melody is written in a single staff. The key signature has one sharp (F#). The piece ends with a double bar line and repeat dots.

34. Sarabanda

Musical score for 34. Sarabanda, Altus part, measures 1-11. The piece is in C major, 3/2 meter, and 2/4 time signature. It consists of 11 measures. The first measure starts with a treble clef and a 3/2 time signature. The melody is written in a single staff. The key signature has one sharp (F#). The piece ends with a double bar line and repeat dots.

35. Paduan



6



10



14



19



23



28



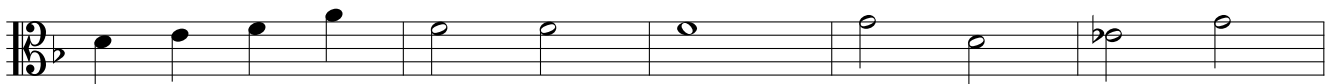
33



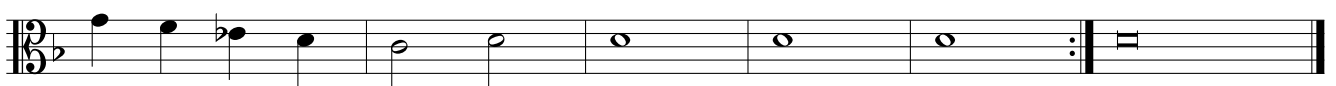
37



41



46



36. Alemanda

Musical score for Alemanda, measures 1-13. The piece is in 2/4 time and B-flat major. It consists of three staves of music. The first staff contains measures 1-4, the second staff contains measures 5-8, and the third staff contains measures 9-13. The piece ends with a double bar line and repeat signs.

37. Courant

Musical score for Courant, measures 1-20. The piece is in 3/2 time and B-flat major. It consists of three staves of music. The first staff contains measures 1-6, the second staff contains measures 7-12, and the third staff contains measures 13-20. The piece ends with a double bar line and repeat signs.

38. Ballo Adagio

Musical score for Ballo Adagio, measures 1-9. The piece is in 2/4 time and B-flat major. It consists of two staves of music. The first staff contains measures 1-5, and the second staff contains measures 6-9. The tempo marking *Allegro* is placed above the second staff. The piece ends with a double bar line and repeat signs.

39. Sarabanda

Musical score for Sarabanda, measures 1-11. The piece is in 3/2 time and B-flat major. It consists of two staves of music. The first staff contains measures 1-6, and the second staff contains measures 7-11. The piece ends with a double bar line and repeat signs.

40. Paduan



8



12



17



21



25



29



34



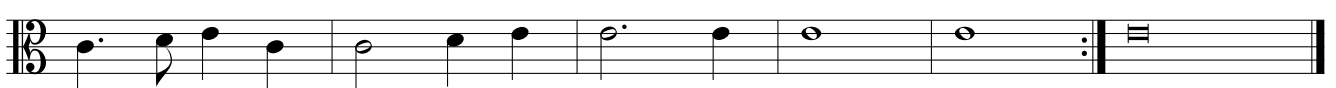
38



42



45



41. Alemanda

Musical score for Alemanda, measures 1-10. The piece is in 3/4 time. The notation is in bass clef. Measure 1 starts with a common time signature 'C'. The melody consists of quarter and half notes. Measure 4 is marked with a '4'. Measure 7 is marked with a '7'. Measure 11 is marked with an '11'. The piece ends with a double bar line and repeat dots.

42. Courant

Musical score for Courant, measures 1-20. The piece is in 3/2 time. The notation is in bass clef. Measure 7 is marked with a '7'. Measure 12 is marked with a '12'. Measure 20 is marked with a '20'. The piece ends with a double bar line and repeat dots.

43. Ballo

Musical score for Ballo, measures 1-5. The piece is in common time. The notation is in bass clef. Measure 5 is marked with a '5'. The piece ends with a double bar line and repeat dots.

44. Sarabanda

Musical score for Sarabanda, measures 1-11. The piece is in 3/2 time. The notation is in bass clef. Measure 6 is marked with a '6'. Measure 11 is marked with an '11'. The piece ends with a double bar line and repeat dots.

45. Paduan



6



11



17



21



24



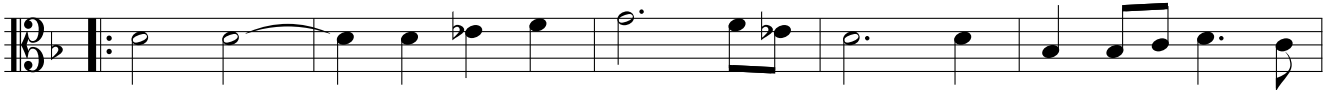
27



31



35



40



44



48



46. Alemanda

Musical score for Alemanda, measures 1-10. The piece is in 3/4 time and B-flat major. It features a simple, flowing melody with a repeat sign at the end of measure 10.

47. Courant

Musical score for Courant, measures 1-18. The piece is in 3/2 time and B-flat major. It features a more complex melody with a repeat sign at the end of measure 18.

48. Ballo Adagio

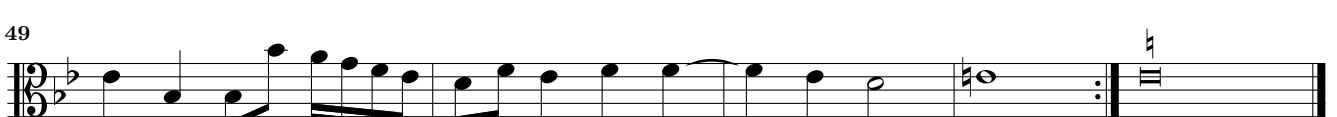
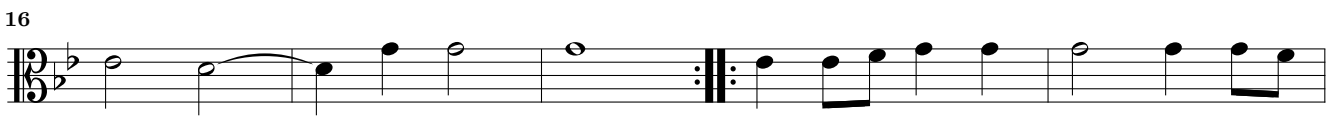
Musical score for Ballo Adagio, measures 1-10. The piece is in 3/4 time and B-flat major. It features a simple, flowing melody with a repeat sign at the end of measure 10.

Allegro

49. Sarabanda

Musical score for Sarabanda, measures 1-11. The piece is in 3/2 time and B-flat major. It features a simple, flowing melody with a repeat sign at the end of measure 11.

50. Paduan



51. Alemanda

Musical score for Alemanda, featuring a single staff in bass clef with a common time signature (C). The piece consists of four lines of music. The first line starts with a treble clef and a key signature of two flats (B-flat and E-flat). The second line is marked with a '4' above the staff. The third line is marked with a '7' above the staff. The fourth line is marked with an '11' above the staff. The piece concludes with a double bar line and repeat signs.

52. Courant

Musical score for Courant, featuring a single staff in bass clef with a 3/2 time signature. The piece consists of four lines of music. The first line starts with a treble clef and a key signature of two flats (B-flat and E-flat). The second line is marked with a '5' above the staff. The third line is marked with an '11' above the staff. The fourth line is marked with a '17' above the staff. The piece concludes with a double bar line and repeat signs.

53. Ballo Adagio Adagio

Musical score for Ballo Adagio Adagio, featuring a single staff in bass clef with a common time signature (C). The piece consists of two lines of music. The first line starts with a treble clef and a key signature of two flats (B-flat and E-flat). The second line is marked with a '5' above the staff and the tempo marking 'Allegro'. The piece concludes with a double bar line and repeat signs.

54. Sarabanda

Musical score for Sarabanda, featuring a single staff in bass clef with a 3/2 time signature. The piece consists of three lines of music. The first line starts with a treble clef and a key signature of two flats (B-flat and E-flat). The second line is marked with a '6' above the staff. The third line is marked with an '12' above the staff. The piece concludes with a double bar line and repeat signs.

55. Paduan

The musical score for '55. Paduan' is written in G major (one sharp) and common time (C). It consists of ten staves of music. The notation includes various rhythmic values such as quarter, eighth, and sixteenth notes, as well as rests and repeat signs. The piece concludes with a double bar line and repeat dots.

56. Alemanda

57. Courant

58. Ballo

Studenten-Music – 60. Sarabanda – Altus

Musical score for '58. Ballo' in G major, common time (C). The score consists of four staves. The first staff begins with a treble clef, a key signature of one sharp (F#), and a common time signature. The melody is written in a simple, rhythmic style. The second and third staves continue the melody with various note values and rests. The fourth staff concludes the piece with a double bar line and repeat dots.

59. Courant

Musical score for '59. Courant' in G major, 3/2 time. The score consists of six staves. The first staff begins with a treble clef, a key signature of one sharp (F#), and a 3/2 time signature. The melody is written in a simple, rhythmic style. The second and third staves continue the melody with various note values and rests. The fourth and fifth staves conclude the piece with a double bar line and repeat dots.

60. Sarabanda

Musical score for '60. Sarabanda' in G major, 3/2 time. The score consists of four staves. The first staff begins with a treble clef, a key signature of one sharp (F#), and a 3/2 time signature. The melody is written in a simple, rhythmic style. The second and third staves continue the melody with various note values and rests. The fourth staff concludes the piece with a double bar line and repeat dots.