

567959

Viola.

*Allegro maestoso*

No. 1.  
Trio.

The musical score for Viola, No. 1, Trio, is written in G major and 3/4 time. It consists of 12 staves of music. The tempo is marked *Allegro maestoso*. The score includes various dynamics and articulations:

- Staff 1: *f*, *tr*
- Staff 2: *f*
- Staff 3: *p*, *mf*, *rf*, *con*
- Staff 4: *espress.*
- Staff 5: *p*
- Staff 6: *tr*
- Staff 7: *fp*
- Staff 8: *fp*

Viola.

237

*f p*

*sfz p p*

*f*

1 2

*fp fp*

*f*

*fp*

*tr*

V. S.

Viola.

*f* *p* *con*  
*espress.*  
*f* *4* *4*  
*1* *2*  
*tr* *ff*  
*p*  
*f* *f* *p*  
*f*  
*3* *2* *tr* *p*  
*tr* *tr* *tr* *1* *tr*  
*p* *p* *f* *sf* *sf* *f*  
*fp*

Viola.

5  
209

Larghetto.

The musical score for Viola is written in a single system with 15 staves. The tempo is marked 'Larghetto.' and the key signature has one flat. The score includes various dynamics such as *fp*, *f*, *p*, *f*, *pp*, and *f*. It also features several trills (*tr*) and triplets (marked with '3'). The notation includes sixteenth and thirty-second notes, often beamed together. The piece concludes with a *pp* dynamic marking.

Viola.

Menuetto vivace  
ma non troppo Presto.

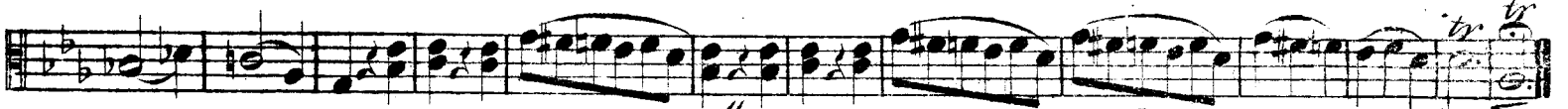
The Menuetto vivace section consists of ten staves of music. It begins with a dynamic marking of *f*. The first staff includes a *p* marking. The second staff has *fx* markings. The third staff has a *p* marking. The fourth staff has *f* and *ff* markings. The fifth staff has a *pp* marking. The sixth staff has *mf* markings. The seventh staff has *f* and *p* markings. The eighth staff has *f* and *p* markings. The ninth staff has *cres.*, *f*, *p*, and *f* markings, ending with *Fine*.

Trio.

The Trio section consists of three staves of music. The first staff has a *p pxxx* marking. The second staff has an *arco* marking. The third staff has a *tr* marking.

Viola.

277



*Meno. Da Capo senza Replica sino al Fine.*



V. S.

Viola.

Tr  
f p f ff  
1 p f  
2 3 2  
p  
dol.  
sf sf f  
1 2 f  
p  
f  
ff sf  
p  
1 1 1



Viola.

246  
96

15  
15  
15  
15  
15  
15  
15  
15  
15  
15  
15  
15  
15  
15  
15

*p* *f* *sf* *mf* *p* *tr* *dol.* *sf* *sf* *pp* *f* *tr* *pp* *f* *tr*

*sul Ponticello*

*Fine*