

Fugues

2^e RECUEIL

Fugues à 4 voix N° 7 à 12

Flûte à bec soprano

Ornementer selon les usages de l'époque

Johann PACHELBEL

Transcription et annotations

Pierre Montreuille

7 ^s 8

14 ^s 2

23 ^s 3

32 ^s

37 ^s

43 ^s

8 ^s 7

13 ⁸ ⁴

23 ⁸

28 ⁸

9 ⁸ ⁴

8 ⁸ ⁸

22 ⁸

28 ⁸ ³

34 ⁸

10 ⁸ ⁶

14 ⁸

22 ⁸

11 ⁸

6 ⁸

15 ⁸

21 ⁸

33 ⁸

38 ⁸

12 ⁸

5 8 3

14 8

19 8

26 8 3

34 8

37 8

44 8

Fugues

2^e RECUEIL

Fugues à 4 voix N° 7 à 12

Flûte à bec alto

Ornementer selon les usages de l'époque

Johann PACHELBEL

Transcription et annotations

Pierre Montreuille

7

6

13

20

28

39

8

The image displays a musical score for the Alto Flute part of a fugue. The score is written in treble clef with an alto clef (C4 on the middle line) and common time (C). It consists of seven staves of music. The first staff begins with a red '7' and contains measures 7 through 12. The second staff begins with a '6' and contains measures 6 through 12. The third staff begins with a '13' and contains measures 13 through 19. The fourth staff begins with a '20' and contains measures 20 through 27, featuring a triplet of eighth notes. The fifth staff begins with a '28' and contains measures 28 through 38, featuring a quintuplet of eighth notes. The sixth staff begins with a '39' and contains measures 39 through 44. The seventh staff begins with a red '8' and contains measures 8 through 14, featuring a quartet of eighth notes. The music is characterized by intricate rhythmic patterns, including sixteenth and thirty-second notes, and various ornaments.

11

18

23

29

9

9

15

20

27

34

10

12

19

26

11

7

14

23

32



40



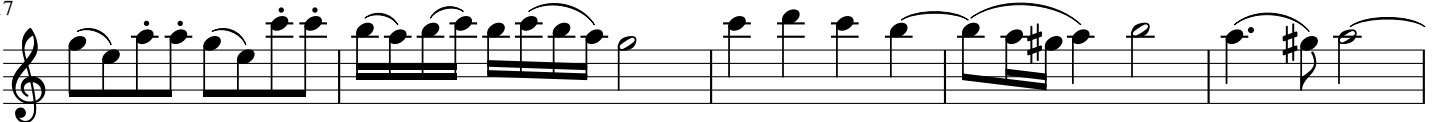
12



7



17



22



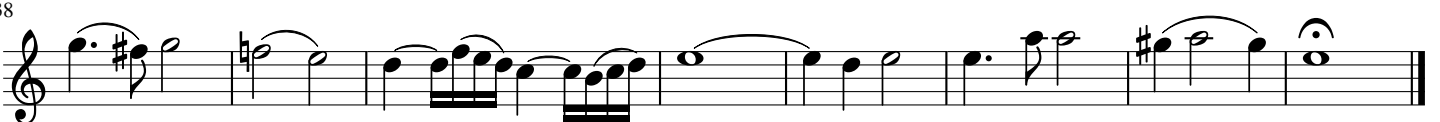
28



33



38



Fugues

2^e RECUEIL

Fugues à 4 voix N° 7 à 12

Flûte à bec Ténor

Ornementer selon les usages de l'époque

Johann PACHELBEL

Transcription et annotations

Pierre Montreuille

7

7

15

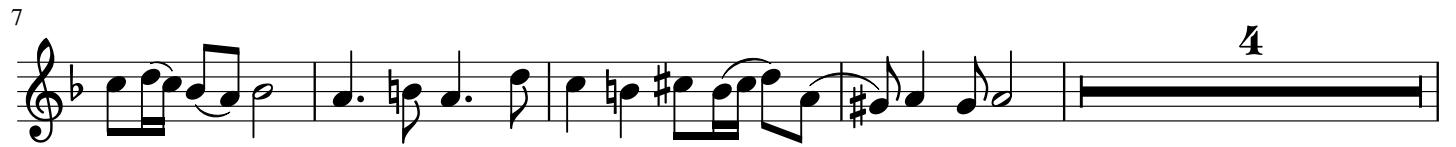
23

30

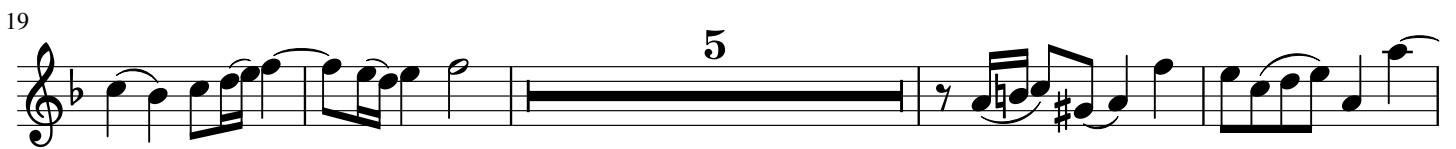
37

43

8 

7 

15 

19 

28 

9 

6 

13 

19 

31

4

10

9

16

23

11

6

13

20

26

33 **3**

40

12 **5**

11

18 **2**

24

31 **2**

38

41

Fugues

2^e RECUEIL

Fugues à 4 voix N° 7 à 12

Flûte à bec basse

Ornementer selon les usages de l'époque

Johann PACHELBEL

Transcription et annotations

Pierre Montreuille

Musical score for Bass Flute (Flûte à bec basse) in C major, Fugue No. 7. The score is written in bass clef with a common time signature (C). The key signature has one sharp (F#). The score consists of eight staves of music, with measure numbers 7, 11, 19, 25, 31, 43, and 8 indicated at the beginning of their respective staves. The music features various rhythmic patterns, including eighth and sixteenth notes, and rests. Fingerings are indicated by numbers 1-5 above notes. A red '8' is placed at the start of the eighth staff. The score concludes with a double bar line at the end of the eighth staff.

6

13

19

25

9

13

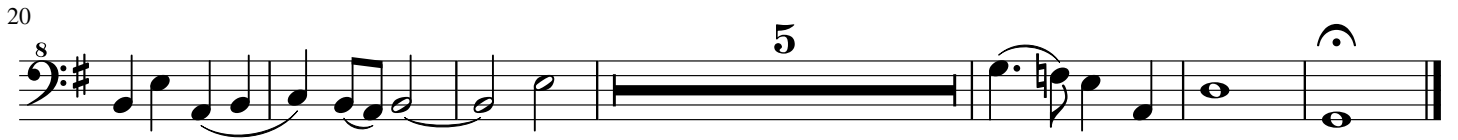
21

29

36

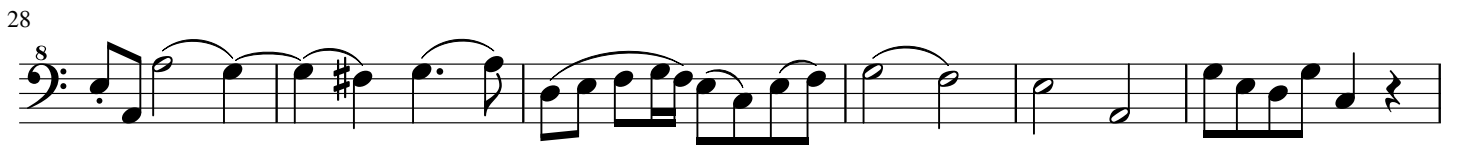
10 

7 

20 

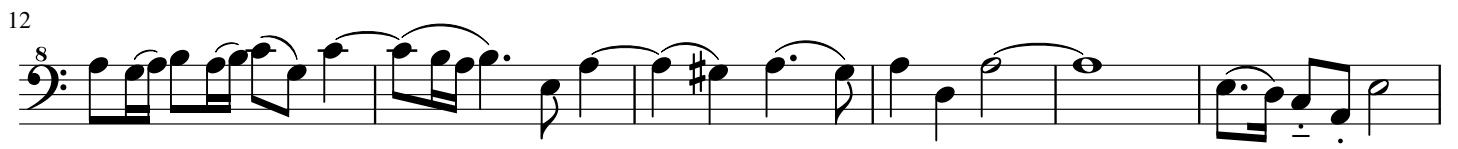
11 

18 

28 

34 

12 

12 

18



8

2

Detailed description: This system contains measures 18 through 23. It begins with a treble clef, a key signature of one sharp (F#), and a common time signature. A small '8' is written above the first measure. The music features a complex rhythmic pattern with many beamed eighth and sixteenth notes, often grouped with slurs. A fermata is placed over the final measure of this system, which is marked with a '2' above it.

24



8

Detailed description: This system contains measures 24 through 27. It starts with a treble clef, a key signature of one sharp, and a common time signature. A small '8' is written above the first measure. The music continues with intricate rhythmic patterns, including many beamed notes and slurs. The system concludes with a fermata over the final measure.

28

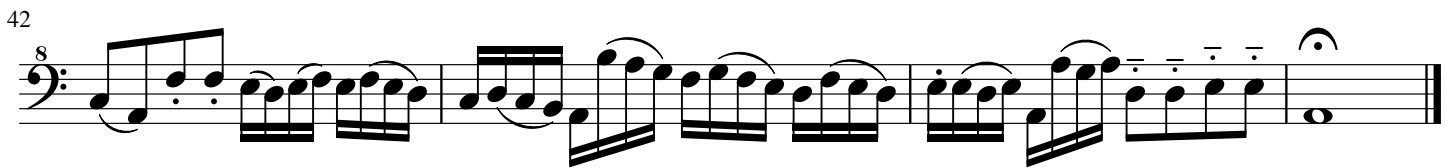


8

7

Detailed description: This system contains measures 28 through 33. It begins with a treble clef, a key signature of one sharp, and a common time signature. A small '8' is written above the first measure. The music features a mix of rhythmic patterns, including some longer note values and slurs. A fermata is placed over the final measure of this system, which is marked with a '7' above it.

42



8

Detailed description: This system contains measures 42 through 47. It starts with a treble clef, a key signature of one sharp, and a common time signature. A small '8' is written above the first measure. The music continues with complex rhythmic patterns, including many beamed notes and slurs. The system concludes with a fermata over the final measure.