

Duo pour 2 violoncelles op.51 n°1

Violoncelle I

Jacques OFFENBACH

(1819-1880)

Allegro

Measures 1-6 of the first staff. The key signature is two sharps (F# and C#), and the time signature is common time (C). The music begins with a piano (*p*) dynamic. The notation includes eighth and sixteenth notes with slurs and accents.

Measures 7-13 of the first staff. The music continues with eighth and sixteenth notes, maintaining the piano (*p*) dynamic.

Measures 14-20 of the first staff. Measure 14 features a trill (*tr*) and a forte (*f*) dynamic. Measure 15 returns to piano (*p*). The notation includes eighth and sixteenth notes with slurs.

Measures 21-27 of the first staff. The music consists of eighth and sixteenth notes with slurs.

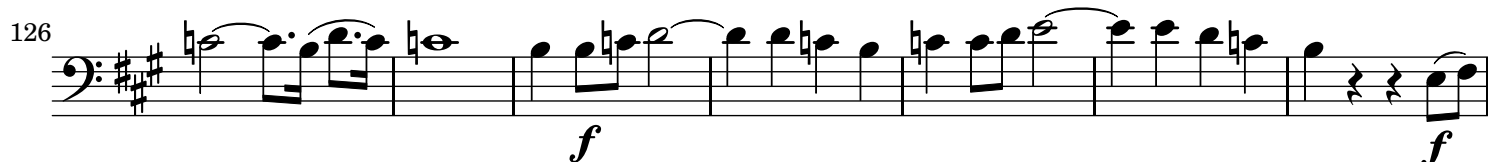
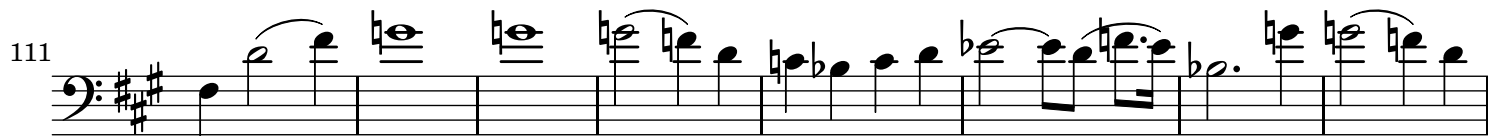
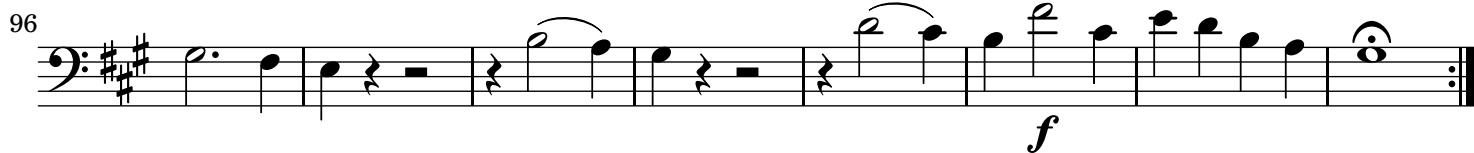
Measures 28-33 of the first staff. The music features eighth and sixteenth notes with slurs, ending with a forte (*f*) dynamic.

Measures 34-38 of the first staff. The music consists of eighth and sixteenth notes with slurs.

Measures 39-44 of the first staff. The music features eighth and sixteenth notes with slurs and accents.

Measures 45-52 of the first staff. The music begins with a piano (*p*) dynamic and consists of eighth and sixteenth notes with slurs.

Measures 53-58 of the first staff. The music consists of eighth and sixteenth notes with slurs.



133

p

140

147

154

161

168

cresc.

174

f *p*

181

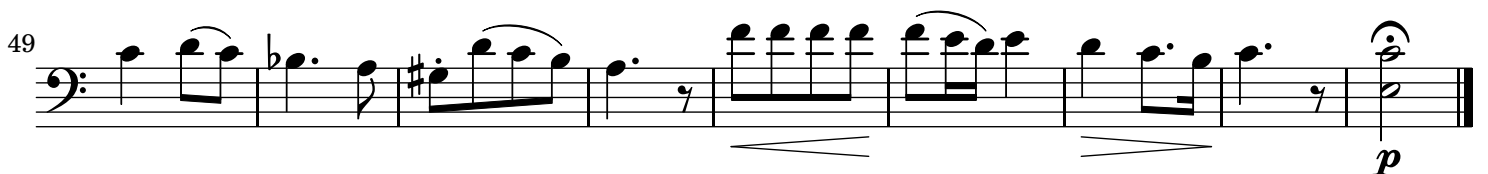
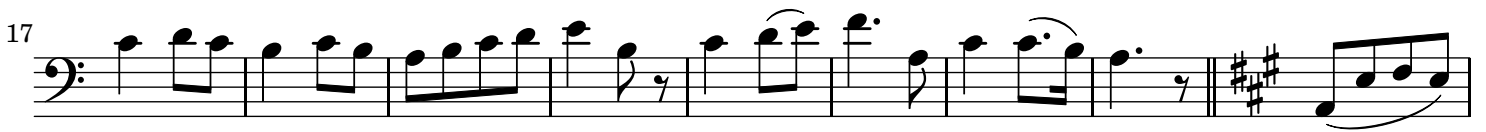
188

195

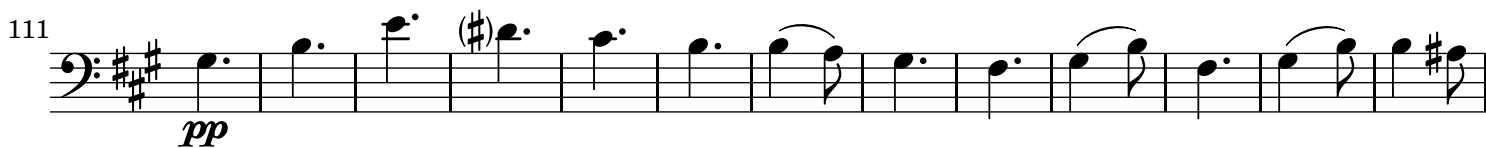
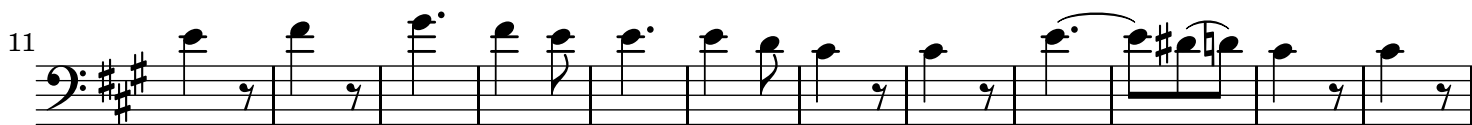
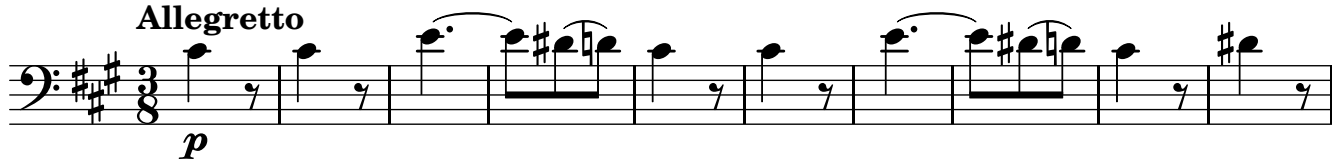
201

f

Andante



Allegretto



138

149

160

173

187

199

211

222

232

244

255