

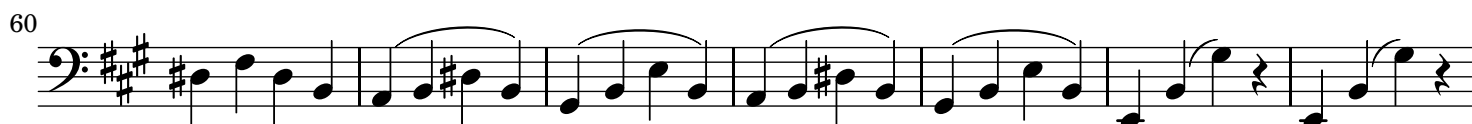
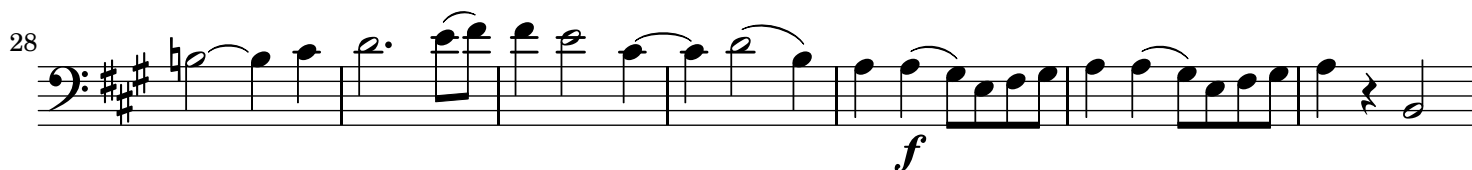
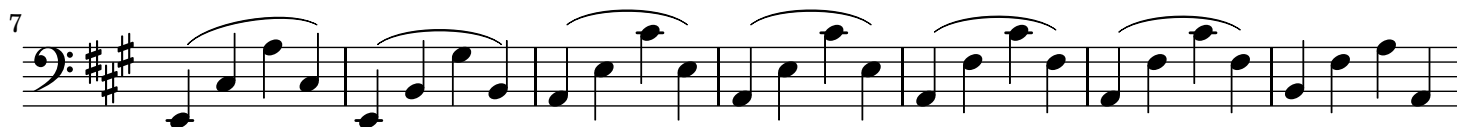
# Duo pour 2 violoncelles op.51 n°1

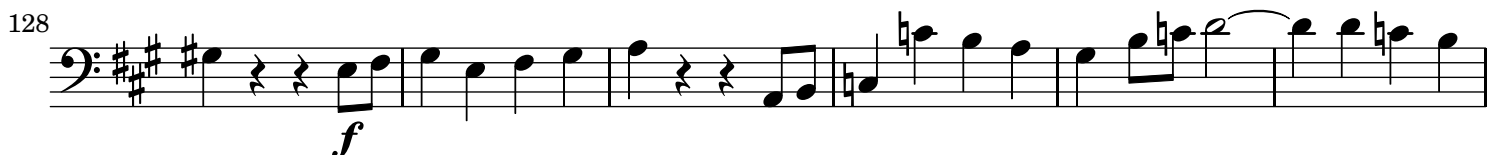
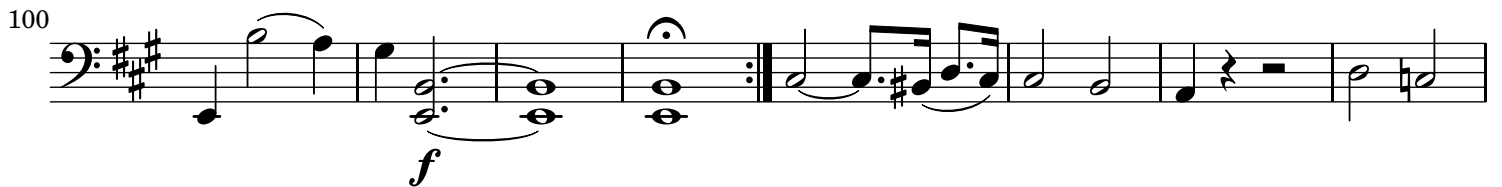
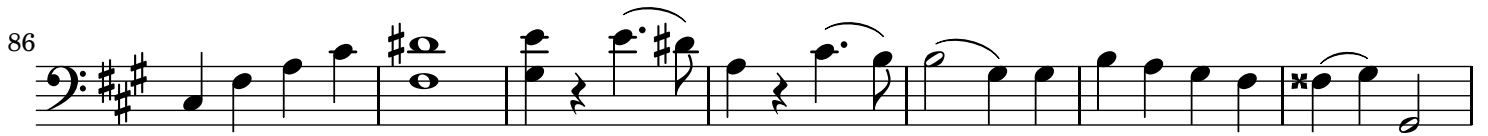
Violoncelle II

Jacques OFFENBACH

(1819-1880)

**Allegro**





134

*p*

This system contains measures 134 to 140. It begins with a melodic line in the bass clef, featuring eighth and sixteenth notes with slurs. A dynamic marking of *p* (piano) is placed below the staff at the start of measure 138.

141

This system contains measures 141 to 148. The melodic line continues with slurs and rests, maintaining the *p* dynamic.

149

This system contains measures 149 to 156. The melodic line continues with slurs and rests.

158

This system contains measures 158 to 165. The melodic line continues with slurs and rests.

166

This system contains measures 166 to 171. The melodic line continues with slurs and rests.

172

*cresc.* *f*

This system contains measures 172 to 178. A *cresc.* (crescendo) marking is placed below the staff at the start of measure 172, and a *f* (forte) marking is placed below the staff at the start of measure 175.

179

*p*

This system contains measures 179 to 185. A dynamic marking of *p* (piano) is placed below the staff at the start of measure 179.

186

This system contains measures 186 to 192. The melodic line continues with slurs and rests.

193

This system contains measures 193 to 199. The melodic line continues with slurs and rests.

200

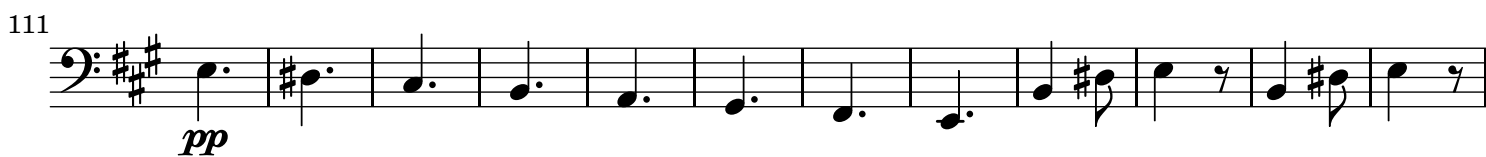
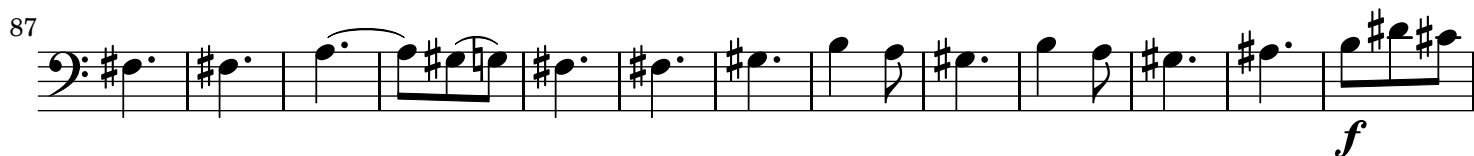
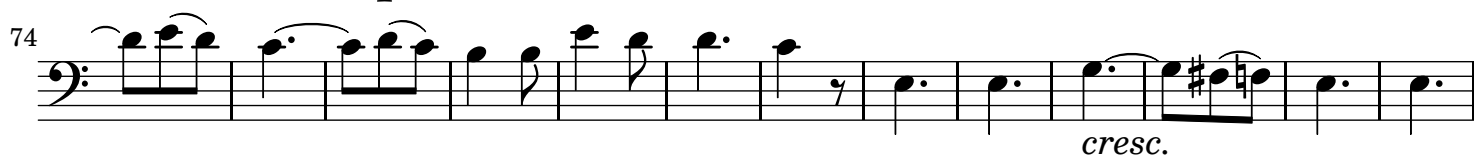
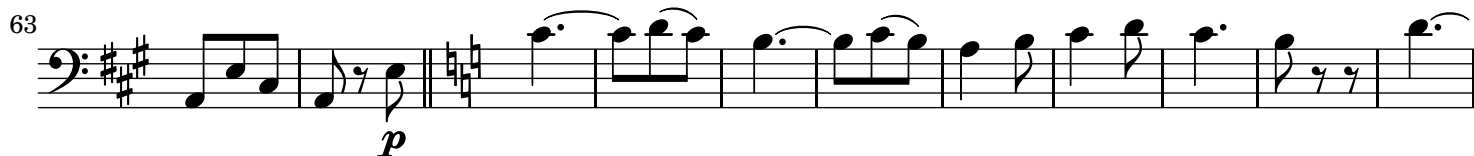
*f*

This system contains measures 200 to 206. A dynamic marking of *f* (forte) is placed below the staff at the end of measure 206.

## Andante



## Allegretto



136

148

160

170

182

192

202

212

223

234

244

256

*f*

*p*

*mf*

*f*

*f*

*f*