

Trombone Alto

# Symphoni N° 3

D moll

## I

Allegro appassionato ma non troppo presto

Ludvig Norman Op. 58  
1881

VI.I *fz fz*

13 *fz ff*

21 *fz ff* A

30 *ff* B C

78 *sf marc.* 20 un poco rit. Cl.I

105 a tempo VI.I 12 D *ff*

125 39 Fl. E *f*

173 *sf sf > p* 29 F *ff*

210 1. 2. 33 *fz fz sf*

249

B. *pp*  $\rightrightarrows$  *ppp*

260

G *sf*  $\rightrightarrows$  *f*

268

*sf*  $\rightrightarrows$  *sf*

279

H J 16 *sf*  $\rightrightarrows$  *ff*

302

310

8 Ob.I VI. I *poco rit.*  $\rightrightarrows$  *a Tempo*

324

K 14 *ff*  $\rightrightarrows$  *sf*  $\rightrightarrows$  *sf*

345

L 6 *f*  $\rightrightarrows$  *pp*

361

*pp*  $\rightrightarrows$  *f*

372

M N 4 26 *fz*  $\rightrightarrows$  *ff*

409

*ff*

# II

Andante cantabile **22** Un poco più moto e agitato **18** **A**

*mf e sostenuto bene e maestoso*

43

48 **7** Vc.

59 **B**  
*f e molto marcato sf*

65 **Eistesso tempo e tranquillo**  
**24**  
*sf*

94 **Eistesso tempo ma un poco agitato**  
**20** **10** VI. I

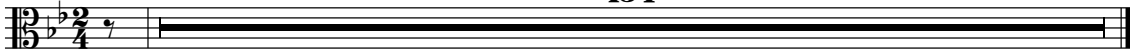
126 **C**  
*mf*

131 un poco rit. a Tempo I **3** **13** Ob. *pp*

### III

Allegretto molto comodo

154



### IV

Allegro molto e con brio

VI. I

*f*

8

*fz* **10** *fz* *fz* *fz* **A**

23

**23** **3** **B** *f* *sf* *sf* *sf* *sf*

55

**37** *fag.II* *f*

99

**C** *ff*

107

*fz* *fz* *fz* *fz* **D** **28**

The musical score for section IV is written in bass clef with a key signature of one sharp (F#) and a time signature of 2/4. It begins with a VI. I marking. The first measure has a dynamic of *f*. The score is divided into measures 8, 23, 55, 99, and 107. Section A starts at measure 10 with dynamics *fz*, *fz*, *fz*, and *fz*. Section B starts at measure 23 with dynamics *f*, *sf*, *sf*, *sf*, and *sf*. Section C starts at measure 99 with a dynamic of *ff*. Section D starts at measure 107 with dynamics *fz*, *fz*, *fz*, and *fz*. There are also markings for *fag.II* at measure 55 and a final measure rest of 28 measures at the end of section D.

140 **E**

140 141 142 143 144 145 146

*fz fz fz*

Detailed description: Musical staff for measures 140-146. The key signature has two sharps (F# and C#). The staff contains six measures of music. Measure 140 starts with a whole rest. Measures 141-142 have a half note G4 with a slur. Measure 143 has a half note F#4 with a slur. Measure 144 has a half note E4 with a slur. Measure 145 has a whole rest. Measure 146 has a half note G4 with a slur. Dynamics are *fz* under measures 141, 143, and 146. A section marker 'E' is above measure 145.

147

147 148 149 150 151 152 153

*fz cresc. fz fz fz ff*

Detailed description: Musical staff for measures 147-153. The key signature has two sharps. The staff contains seven measures of music. Measures 147-150 have half notes G4, F#4, E4, and D4 with slurs. Measure 151 has a half note C#4 with a slur. Measure 152 has a half note B3 with a slur. Measure 153 has a half note A3 with a slur. Dynamics are *fz* under measures 147, 149, 150, and 151; *cresc.* above measure 148; and *ff* under measure 152.

154

154 155 156 157 158 159 160 161 162 163 164 165 166 167 168 169 170 171 172 173

*fz* **14**

Detailed description: Musical staff for measures 154-173. The key signature has two sharps. The staff contains twenty measures of music. Measures 154-173 feature a complex rhythmic pattern of eighth and sixteenth notes with slurs and accents. Dynamics include *fz* under measure 169 and a section marker '14' above measure 173.

174 **F**

174 175 176 177 178 179 180 181 182 183 184 185 186 187 188 189 190 191 192 193 194 195 196 197 198 199 200 201

*ff fz* **23**

Detailed description: Musical staff for measures 174-201. The key signature has two sharps. The staff contains twenty-eight measures of music. Measures 174-175 have whole notes G4 and F#4. Measures 176-177 have whole notes E4 and D4. Measures 178-179 have whole notes C#4 and B3. Measures 180-181 have whole notes A3 and G3. Measures 182-183 have whole notes F#3 and E3. Measures 184-185 have whole notes D3 and C#3. Measures 186-187 have whole notes B2 and A2. Measures 188-189 have whole notes G2 and F#2. Measures 190-191 have whole notes E2 and D2. Measures 192-193 have whole notes C#2 and B1. Measures 194-195 have whole notes A1 and G1. Measures 196-197 have whole notes F#1 and E1. Measures 198-199 have whole notes D1 and C#1. Measures 200-201 have whole notes B0 and A0. Dynamics are *ff* under measure 174 and *fz* under measure 180. A section marker 'F' is above measure 174, and '23' is above measure 199.

202 **G**

202 203 204 205 206 207 208 209 210 211 212 213 214 215 216 217 218 219 220 221 222 223 224 225 226 227 228 229 230 231 232 233 234 235 236 237 238 239 240 241 242 243 244 245 246 247 248

*mf* **20** **22**

Detailed description: Musical staff for measures 202-248. The key signature has two sharps. The staff contains forty-seven measures of music. Measures 202-203 are whole rests. Measures 204-205 have half notes G4 and F#4 with a slur. Measures 206-207 have half notes E4 and D4 with a slur. Measures 208-209 have half notes C#4 and B3 with a slur. Measures 210-211 have half notes A3 and G3 with a slur. Measures 212-213 have half notes F#3 and E3 with a slur. Measures 214-215 have half notes D3 and C#3 with a slur. Measures 216-217 have half notes B2 and A2 with a slur. Measures 218-219 have half notes G2 and F#2 with a slur. Measures 220-221 have half notes E2 and D2 with a slur. Measures 222-223 have half notes C#2 and B1 with a slur. Measures 224-225 have half notes A1 and G1 with a slur. Measures 226-227 have half notes F#1 and E1 with a slur. Measures 228-229 have half notes D1 and C#1 with a slur. Measures 230-231 have half notes B0 and A0 with a slur. Measures 232-233 have whole notes G0 and F#0. Measures 234-235 have whole notes E0 and D0. Measures 236-237 have whole notes C#0 and B-1. Measures 238-239 have whole notes A-1 and G-1. Measures 240-241 have whole notes F#-1 and E-1. Measures 242-243 have whole notes D-1 and C#-1. Measures 244-245 have whole notes B-2 and A-2. Measures 246-247 have whole notes G-2 and F#-2. Measure 248 has a whole note E-2. Dynamics include *mf* under measure 204, and section markers '20' above measure 202 and '22' above measure 222.

249 **H**

249 250 251 252 253 254 255 256 257 258

*f ff* **3**

Detailed description: Musical staff for measures 249-258. The key signature has two sharps. The staff contains ten measures of music. Measures 249-250 have half notes G4 and F#4. Measures 251-252 have half notes E4 and D4. Measures 253-254 have half notes C#4 and B3. Measures 255-256 have half notes A3 and G3. Measures 257-258 have half notes F#3 and E3. Dynamics are *f* under measure 249 and *ff* under measure 253. A section marker 'H' is above measure 249, and '3' is above measure 253.

259

259 260 261 262 263 264 265 266

**3**

Detailed description: Musical staff for measures 259-266. The key signature has two sharps. The staff contains eight measures of music. Measures 259-260 are whole rests. Measures 261-262 have half notes G4 and F#4 with a slur. Measures 263-264 have half notes E4 and D4 with a slur. Measures 265-266 have half notes C#4 and B3 with a slur. A section marker '3' is above measure 259.

267 **I**

267 268 269 270 271 272 273 274 275 276 277 278 279 280 281 282 283 284 285 286 287 288

*fz mp* **18**

Detailed description: Musical staff for measures 267-288. The key signature has two sharps. The staff contains twenty-two measures of music. Measures 267-268 have half notes G4 and F#4 with a slur. Measures 269-270 have half notes E4 and D4 with a slur. Measures 271-272 have half notes C#4 and B3 with a slur. Measures 273-274 have half notes A3 and G3 with a slur. Measures 275-276 have half notes F#3 and E3 with a slur. Measures 277-278 have half notes D3 and C#3 with a slur. Measures 279-280 have half notes B2 and A2 with a slur. Measures 281-282 have half notes G2 and F#2 with a slur. Measures 283-284 have half notes E2 and D2 with a slur. Measures 285-286 have half notes C#2 and B1 with a slur. Measures 287-288 have half notes A1 and G1 with a slur. Dynamics are *fz* under measure 267 and *mp* under measure 287. A section marker 'I' is above measure 267, and '18' is above measure 273.

290

290 291 292 293 294 295

*sf f*

Detailed description: Musical staff for measures 290-295. The key signature has two sharps. The staff contains six measures of music. Measures 290-291 have half notes G4 and F#4 with a slur. Measures 292-293 have half notes E4 and D4 with a slur. Measures 294-295 have half notes C#4 and B3 with a slur. Dynamics are *sf* under measure 290 and *f* under measure 291.

296

296 297 298 299 300 301 302 303

*fz fz*

Detailed description: Musical staff for measures 296-303. The key signature has two sharps. The staff contains eight measures of music. Measures 296-297 have half notes G4 and F#4 with a slur. Measures 298-299 have half notes E4 and D4 with a slur. Measures 300-301 have half notes C#4 and B3 with a slur. Measures 302-303 have half notes A3 and G3 with a slur. Dynamics are *fz* under measures 296 and 298.



249

B. *pp* *ppp*

G

259

*sf* *f*

267

*sf* *sf*

275

*sf* *sf*

H

J

282

16 *f* *ff*

305

8

320

Ob.I *poco rit.* *a Tempo* 12

339

*ff* *sf* *sf*

347

6 *f* *pp*

363

*pp* *f* 4

376 **M** **26** **N**  
*fz* *ff*

411 *ff*

## II

**Andante cantabile** **Un poco più moto e agitato** **A**  
**22** **18**  
*mf e sostenuto bene e maestoso*

44

49 **7** Vc.

60 **B**  
*f e molto marcato sf*

66 **24**  
*sf*

94 **Listesso tempo e tranquillo** **Listesso tempo ma un poco agitato**  
**20** **10** VI. I

126 **C**  
*mf*

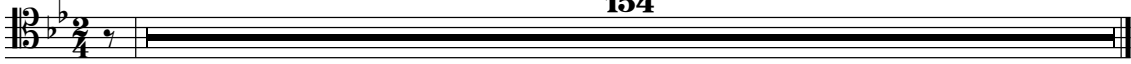
131 **3** **13** Ob. *pp*



### III

Allegretto molto comodo

154

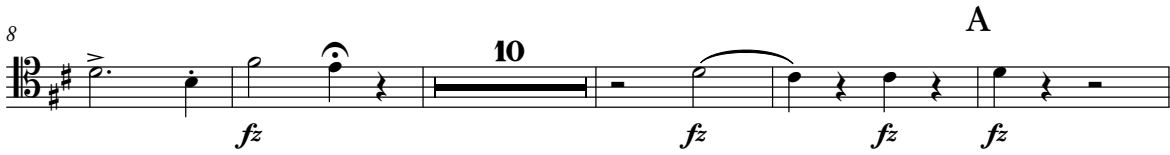


### IV

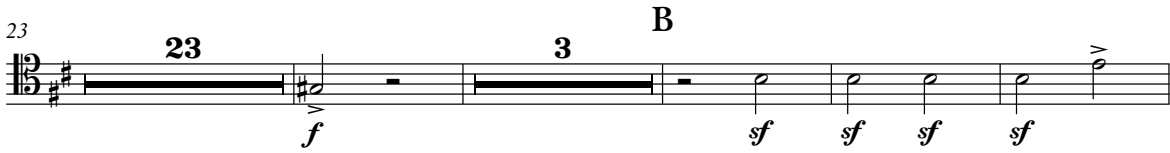
Allegro molto e con brio



8



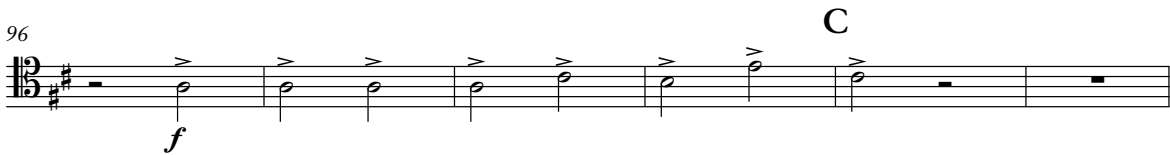
23



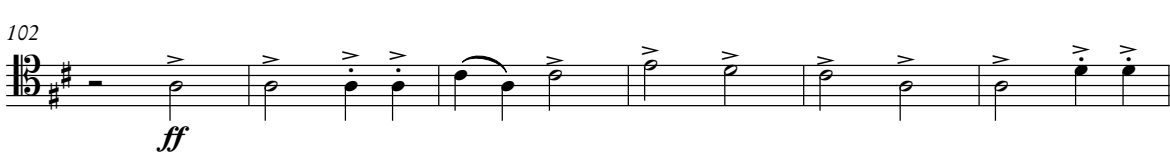
53



96



102



108



140 **E**

140 141 142 143 144 145 146

*fz* *fz* *fz*

Detailed description: Musical staff for measures 140-146. Key signature: one sharp (F#). Time signature: 3/4. Measure 140 starts with a whole rest, followed by a half note G4, quarter note A4, quarter note B4. Measure 141: half note C5, quarter note B4, quarter note A4. Measure 142: half note G4, quarter note F#4, quarter note E4. Measure 143: whole note D4. Measure 144: whole note C4. Measure 145: whole note B3. Measure 146: whole note A3. Dynamics: *fz* (measures 140, 144, 145), *fz* (measures 141, 142, 143).

147

147 148 149 150 151 152 153

*fz* *cresc. fz* *fz* *fz* *ff*

Detailed description: Musical staff for measures 147-153. Key signature: one sharp (F#). Time signature: 3/4. Measure 147: half note G4, quarter note A4, quarter note B4. Measure 148: half note C5, quarter note B4, quarter note A4. Measure 149: half note G4, quarter note F#4, quarter note E4. Measure 150: half note D4, quarter note C4, quarter note B3. Measure 151: half note A3, quarter note G3, quarter note F#3. Measure 152: half note E3, quarter note D3, quarter note C3. Measure 153: half note B2, quarter note A2, quarter note G2. Dynamics: *fz* (measures 147, 149, 150, 151), *cresc. fz* (measure 148), *ff* (measure 152).

154

154 155 156 157 158 159 160 161 162 163 164 165 166 167 168 169 170 171 172 173

*fz* **14**

Detailed description: Musical staff for measures 154-173. Key signature: one sharp (F#). Time signature: 3/4. Measure 154: half note G4, quarter note A4, quarter note B4. Measure 155: half note C5, quarter note B4, quarter note A4. Measure 156: half note G4, quarter note F#4, quarter note E4. Measure 157: half note D4, quarter note C4, quarter note B3. Measure 158: half note A3, quarter note G3, quarter note F#3. Measure 159: half note E3, quarter note D3, quarter note C3. Measure 160: half note B2, quarter note A2, quarter note G2. Measure 161: whole rest. Measure 162: whole rest. Measure 163: whole rest. Measure 164: whole rest. Measure 165: whole rest. Measure 166: whole rest. Measure 167: whole rest. Measure 168: whole rest. Measure 169: whole rest. Measure 170: whole rest. Measure 171: whole rest. Measure 172: whole rest. Measure 173: whole rest. Dynamics: *fz* (measure 154). Rehearsal mark **14** at the end of measure 173.

174 **F**

174 175 176 177 178 179 180 181 182 183 184 185 186 187 188 189 190 191 192 193 194 195 196 197 198 199 200 201

*ff* *fz* **23**

Detailed description: Musical staff for measures 174-201. Key signature: one sharp (F#). Time signature: 3/4. Measure 174: whole note G4. Measure 175: whole note A4. Measure 176: whole note B4. Measure 177: whole note C5. Measure 178: whole note B4. Measure 179: whole note A4. Measure 180: whole note G4. Measure 181: whole note F#4. Measure 182: whole note E4. Measure 183: whole note D4. Measure 184: whole note C4. Measure 185: whole note B3. Measure 186: whole note A3. Measure 187: whole note G3. Measure 188: whole note F#3. Measure 189: whole note E3. Measure 190: whole note D3. Measure 191: whole note C3. Measure 192: whole note B2. Measure 193: whole note A2. Measure 194: whole note G2. Measure 195: whole note F#2. Measure 196: whole note E2. Measure 197: whole note D2. Measure 198: whole note C2. Measure 199: whole note B1. Measure 200: whole note A1. Measure 201: whole note G1. Dynamics: *ff* (measures 174-183), *fz* (measures 184-193). Rehearsal mark **23** at the end of measure 201.

202 **G**

202 203 204 205 206 207 208 209 210 211 212 213 214 215 216 217 218 219 220 221 222 223 224 225 226 227 228 229 230 231 232 233 234 235 236 237 238 239 240 241 242 243 244 245 246 247 248

**20** *mf* **22**

Detailed description: Musical staff for measures 202-248. Key signature: one sharp (F#). Time signature: 3/4. Measure 202: whole rest. Measure 203: whole rest. Measure 204: whole rest. Measure 205: whole rest. Measure 206: whole rest. Measure 207: whole rest. Measure 208: whole rest. Measure 209: whole rest. Measure 210: whole rest. Measure 211: whole rest. Measure 212: whole rest. Measure 213: whole rest. Measure 214: whole rest. Measure 215: whole rest. Measure 216: whole rest. Measure 217: whole rest. Measure 218: whole rest. Measure 219: whole rest. Measure 220: whole rest. Measure 221: whole rest. Measure 222: whole rest. Measure 223: whole rest. Measure 224: whole rest. Measure 225: whole rest. Measure 226: whole rest. Measure 227: whole rest. Measure 228: whole rest. Measure 229: whole rest. Measure 230: whole rest. Measure 231: whole rest. Measure 232: whole rest. Measure 233: whole rest. Measure 234: whole rest. Measure 235: whole rest. Measure 236: whole rest. Measure 237: whole rest. Measure 238: whole rest. Measure 239: whole rest. Measure 240: whole rest. Measure 241: whole rest. Measure 242: whole rest. Measure 243: whole rest. Measure 244: whole rest. Measure 245: whole rest. Measure 246: whole rest. Measure 247: whole rest. Measure 248: whole rest. Dynamics: *mf* (measures 211-220). Rehearsal marks **20** at the start of measure 202 and **22** at the end of measure 220.

249 **H**

249 250 251 252 253 254 255 256 257 258

*f* **3** *ff*

Detailed description: Musical staff for measures 249-258. Key signature: one sharp (F#). Time signature: 3/4. Measure 249: half note G4, quarter note A4, quarter note B4. Measure 250: half note C5, quarter note B4, quarter note A4. Measure 251: half note G4, quarter note F#4, quarter note E4. Measure 252: half note D4, quarter note C4, quarter note B3. Measure 253: half note A3, quarter note G3, quarter note F#3. Measure 254: half note E3, quarter note D3, quarter note C3. Measure 255: half note B2, quarter note A2, quarter note G2. Measure 256: half note F#2, quarter note E2, quarter note D2. Measure 257: half note C2, quarter note B1, quarter note A1. Measure 258: half note G1, quarter note F#1, quarter note E1. Dynamics: *f* (measures 249-258), *ff* (measures 251-258). Rehearsal mark **3** at the start of measure 251.

259

259 260 261 262 263 264 265 266

**3**

Detailed description: Musical staff for measures 259-266. Key signature: one sharp (F#). Time signature: 3/4. Measure 259: half note G4, quarter note A4, quarter note B4. Measure 260: half note C5, quarter note B4, quarter note A4. Measure 261: half note G4, quarter note F#4, quarter note E4. Measure 262: half note D4, quarter note C4, quarter note B3. Measure 263: half note A3, quarter note G3, quarter note F#3. Measure 264: half note E3, quarter note D3, quarter note C3. Measure 265: half note B2, quarter note A2, quarter note G2. Measure 266: half note F#2, quarter note E2, quarter note D2. Rehearsal mark **3** at the start of measure 259.

267 **I**

267 268 269 270 271 272 273 274 275 276 277 278 279 280 281 282 283 284 285 286 287 288 289

*fz* **18** *mp*

Detailed description: Musical staff for measures 267-289. Key signature: one sharp (F#). Time signature: 3/4. Measure 267: half note G4, quarter note A4, quarter note B4. Measure 268: half note C5, quarter note B4, quarter note A4. Measure 269: half note G4, quarter note F#4, quarter note E4. Measure 270: half note D4, quarter note C4, quarter note B3. Measure 271: half note A3, quarter note G3, quarter note F#3. Measure 272: half note E3, quarter note D3, quarter note C3. Measure 273: half note B2, quarter note A2, quarter note G2. Measure 274: half note F#2, quarter note E2, quarter note D2. Measure 275: half note C2, quarter note B1, quarter note A1. Measure 276: half note G1, quarter note F#1, quarter note E1. Measure 277: whole note G4. Measure 278: whole note A4. Measure 279: whole note B4. Measure 280: whole note C5. Measure 281: whole note B4. Measure 282: whole note A4. Measure 283: whole note G4. Measure 284: whole note F#4. Measure 285: whole note E4. Measure 286: whole note D4. Measure 287: whole note C4. Measure 288: whole note B3. Measure 289: whole note A3. Dynamics: *fz* (measures 267-276), *mp* (measures 277-289). Rehearsal mark **18** at the start of measure 277.

290

290 291 292 293 294 295

*sf* *f*

Detailed description: Musical staff for measures 290-295. Key signature: one sharp (F#). Time signature: 3/4. Measure 290: half note G4, quarter note A4, quarter note B4. Measure 291: half note C5, quarter note B4, quarter note A4. Measure 292: half note G4, quarter note F#4, quarter note E4. Measure 293: half note D4, quarter note C4, quarter note B3. Measure 294: half note A3, quarter note G3, quarter note F#3. Measure 295: half note E3, quarter note D3, quarter note C3. Dynamics: *sf* (measures 290-291), *f* (measures 292-295).

296

296 297 298 299 300 301 302 303

*sf* *fz*

Detailed description: Musical staff for measures 296-303. Key signature: one sharp (F#). Time signature: 3/4. Measure 296: half note G4, quarter note A4, quarter note B4. Measure 297: half note C5, quarter note B4, quarter note A4. Measure 298: half note G4, quarter note F#4, quarter note E4. Measure 299: half note D4, quarter note C4, quarter note B3. Measure 300: half note A3, quarter note G3, quarter note F#3. Measure 301: half note E3, quarter note D3, quarter note C3. Measure 302: half note B2, quarter note A2, quarter note G2. Measure 303: half note F#2, quarter note E2, quarter note D2. Dynamics: *sf* (measures 296-297), *fz* (measures 298-303).

Trombone Basso

# Symphoni N° 3

D moll

## I

Allegro appassionato ma non troppo presto

Ludvig Norman Op. 58  
1881

VI. I.

3

fz fz fz

11

fz fz fz ff

21

A

fz ff

30

7

mf

43

ten.

7 10

B

65

C

pp mf molto cresc. ff

75

marc.

85

fz p

14

104 un poco rit. a tempo

12

CL.I VI.I

Detailed description: This staff contains measures 104 through 110. It begins with a treble clef and a key signature of one flat. The music consists of a series of eighth and quarter notes, some with accents. Above the staff, there are markings for 'CL.I' and 'VI.I'. A rehearsal mark '12' is placed at the end of the staff.

121 D

ff

Detailed description: This staff contains measures 121 through 128. It starts with a bass clef. The music features a series of eighth notes with accents, followed by a half note. A dynamic marking of 'ff' is placed below the staff. A rehearsal mark 'D' is positioned above the first measure.

129

10 22 Fl.

pp

Detailed description: This staff contains measures 129 through 148. It begins with a bass clef. There are two rehearsal marks, '10' and '22', above the staff. The music consists of a series of eighth notes. A dynamic marking of 'pp' is placed below the staff. A 'Fl.' marking is placed above the staff at the end of the piece.

169 E

f sf sf > p

Detailed description: This staff contains measures 169 through 177. It starts with a treble clef. The music features a series of eighth notes with accents, followed by a half note. Dynamic markings of 'f', 'sf', 'sf', and '> p' are placed below the staff. A rehearsal mark 'E' is positioned above the first measure.

178 F

29 1.

ff fz fz

Detailed description: This staff contains measures 178 through 213. It begins with a bass clef. There are rehearsal marks '29' and '1.' above the staff. The music consists of a series of half notes. Dynamic markings of 'ff', 'fz', and 'fz' are placed below the staff.

214b 2.

22 solo pp

sf

Detailed description: This staff contains measures 214b through 244. It starts with a bass clef. There are rehearsal marks '2.' and '22' above the staff. The music consists of a series of eighth notes. Dynamic markings of 'sf' and 'pp' are placed below the staff. A 'solo' marking is placed above the staff.

245

pp ppp

Detailed description: This staff contains measures 245 through 255. It begins with a bass clef. The music consists of a series of eighth notes. Dynamic markings of 'pp' and 'ppp' are placed below the staff.

256 G

sf f

Detailed description: This staff contains measures 256 through 265. It starts with a bass clef. The music features a series of eighth notes with accents, followed by a half note. Dynamic markings of 'sf' and 'f' are placed below the staff. A rehearsal mark 'G' is positioned above the first measure.

266

sf

Detailed description: This staff contains measures 266 through 275. It begins with a bass clef. The music consists of a series of eighth notes. A dynamic marking of 'sf' is placed below the staff.

277 H

*sf sf pp*

293 J

*p mf f ff*

305 8

*Ob.I*

322 K

poco rit. a Tempo

*VI. I ff sf*

340

*sf*

347 6

*f pp*

363 L

*pp f*

376 M N

*fz p ff*

410

*ff*

# II

Andante cantabile **22** Un poco più moto e agitato **18** **A**

*mf e sostenuto bene e maestoso*

44

49 **7** Vc.

61 **B** *f e molto marcato*

67 *sf*

73 **16** **20** **12** **8** *L'istesso tempo e tranquillo*

114 *L'istesso tempo ma un poco agitato* **10** Vl. I *mf*

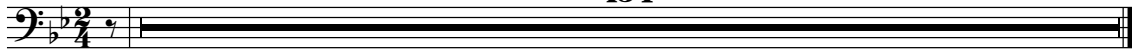
127 **C** **3**

134 un poco rit. a Tempo I **13** Ob. *pp*

### III

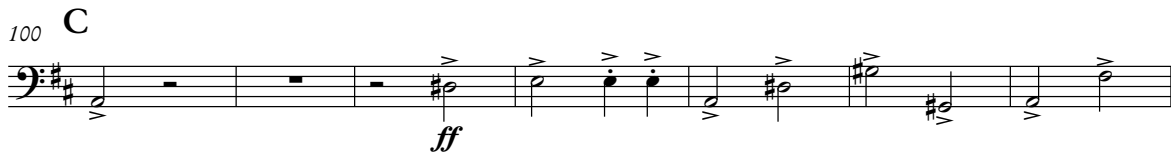
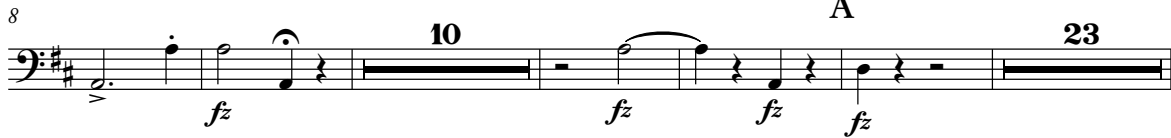
Allegretto molto comodo

154



### IV

Allegro molto e con brio



136 solo

*sf sf sf sf*

140

*fz fz fz fz*

144 E

*fz fz fz cresc. fz*

149

*fz fz ff ff*

153

*fz fz fz fz fz fz*

158

*fz ff 14*

176 F

*fz 23 F*

202 G

*mf 20 23*



H

227

**22** **3**

*f*

254

*ff*

259

**3**

265

*fz*

270 **I**

**12**

*pp*

286

*p* *f* *f*

291

*fz*

298