

Timpani

# Symphony N° 3

D moll

## I

Ludvig Norman Op. 58  
1881

Allegro appassionato ma non troppo presto

The musical score for the Timpani part of Symphony No. 3, D minor, I, by Ludvig Norman. The score is in 2/4 time and consists of seven systems of music. System 1 (measures 1-12) starts with a dynamic of *f* and includes a 4-measure rest. System 2 (measures 13-23) continues with *f* and includes a 4-measure rest. System 3 (measures 24-29) starts with a dynamic of *ff* and includes a 6-measure rest. System 4 (measures 30-44) starts with a dynamic of *f* and includes a 19-measure rest. System 5 (measures 45-74) starts with a dynamic of *ff* and includes a 13-measure rest. System 6 (measures 75-106) starts with a dynamic of *f* and includes a 23-measure rest. System 7 (measures 107-170) starts with a dynamic of *f* and includes a 12-measure rest. System 8 (measures 171-200) starts with a dynamic of *f* and includes a 29-measure rest. The score includes various musical notations such as rests, dynamics (*f*, *ff*, *molto cresc.*), and articulation (trills, *marcato*).

13

24

30

55

75

107

171

19

13

12

45

23

29

*f*

*ff*

*molto cresc.*

*tr*

*marcato*

*un poco rit. a tempo*

VI. I

Cl. I

VI. I

**F**  
207 *ff* *fz*

214a 1. 2. **35** *sf* *pp*

255 *ppp* **G** *f*

264 **6**

277 **H** **16**

298 **J** *f*

307 **2** *sf*

316 **4** *poco rit.* *a Tempo* **VI. I**

325 **10** *f*

339 **K**

346

*p* *tr* *mf*

353

*f* *tr* **2** *pp* *tr* **2** *p* *tr*

**L**  
363

*pp*

370

**5** *fz* *p* *tr*

380

**6** *p* **4** *pp* solo

394

*mf* **4**

**N**  
404

*ff* *tr* **2** *tr*

412

*p* *tr*



83

*p*

88

**2**

92

L'istesso tempo e tranquillo

*pp* *pp*

97

**3** **4**

108

**12**

114

L'istesso tempo ma un poco agitato C

**13** **4** *pp*

134

un poco rit. a Tempo I

**3**

140

solo

**2**

146

**2** *pp*

### III

Allegretto molto comodo

4 A 9 3

D-G *p* *sf*

20

*pp* 7

34

B 4 C

*fz* *f* *pp*

46

2 D

*p* *f fz*

55

2 3

*pp* *f*

65

10 29 un poco rit. a Tempo 1<sup>mo</sup> 8

*pp*

116

E 8

*sf* *f* *f* *p*

129

F 9

*sf* *mf* *pp*

147

Poco più animato

*pp* *ff* *pp*

# IV

Allegro molto e con brio

D-A VI. I *f*

7 *f* **A**

23 **3** **4** *p* *p*

37 **B** **13** **42** *fag.* *f*

97 **C** *ff*

105 *fz* *fz* *fz* *fz*

112 **D** solo *fz* **9** *pp* **12**

140 **E** *fz* *fz* *fz*

148 *fz* *fz* *fz* *fz* *fz* *fz*

156 *p* **6**

169 *f* *tr* *tr*

176 *fz* **F** *tr* **11** *pp* **3** *tr* *pp* **5**

200 *f* *tr* **G** *p* **33** *f* *tr*

239 **3** *tr* *tr*

249 **H** *tr* *tr* *ff*

257 *tr* *tr* *tr* *tr* *tr*

264 *tr* *tr* *tr* *tr* *fz*

270 **I** **16** *pp* *tr* *f*

291 *tr* *tr* *tr* *tr* *tr*

296 *tr*



Triangolo

# Symphoni N° 3

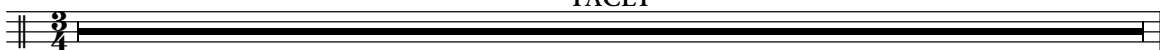
D moll

I

Ludvig Norman Op. 58  
1881

Allegro appassionato ma non troppo presto

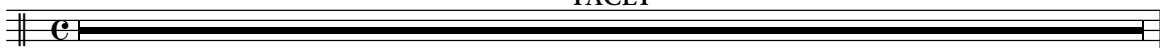
TACET



II

Andante cantabile

TACET



III

Allegretto molto comodo  
solo

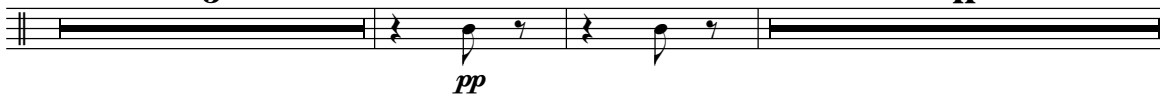
11



16 A

5

11



34 B

8

C

5



51

D

5

16

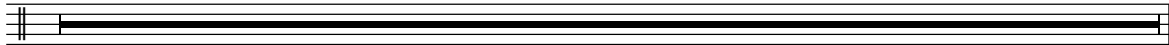


Triangolo

2

75

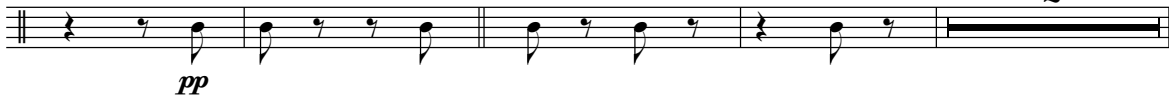
28



103

un poco rit. a Tempo 1<sup>mo</sup>

2



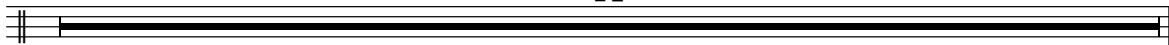
109

3



116 **E**

14



130 **F**

7



5

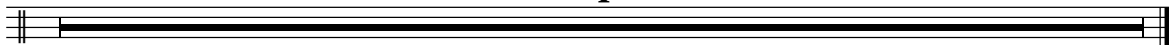


145



151 Poco più animato

4



IV

Allegro molto e con brio

TACET

