

String Quartet KV. 464 (nr. 18)

for 2 violins, viola and cello

Allegro.

W. A. MOZART (1756-1791)

Violino II.

The musical score for Violino II consists of nine staves of music. The key signature is two sharps (F# and C#), and the time signature is 3/4. The piece begins with a piano (*p*) dynamic and ends with a forte (*f*) dynamic. The score includes various musical notations such as slurs, ties, and triplets. Measure numbers 9, 16, 23, 29, 36, 44, 51, and 58 are indicated at the start of their respective staves. Dynamics like *p*, *f*, and *cresc.* are placed throughout the score to indicate volume changes.

67

p

74

f

p

82

f

90

p

98

f

105

p

cresc.

112

f

119

p

127

cresc.

135



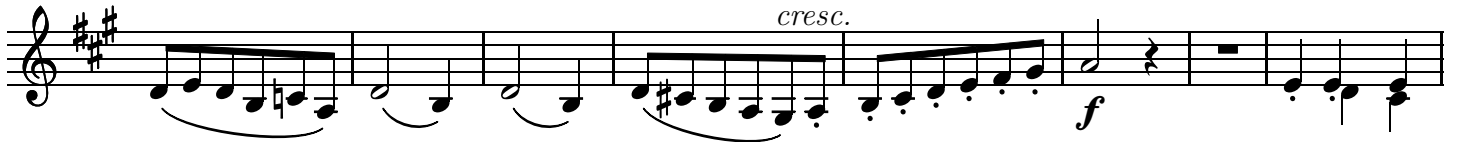
142



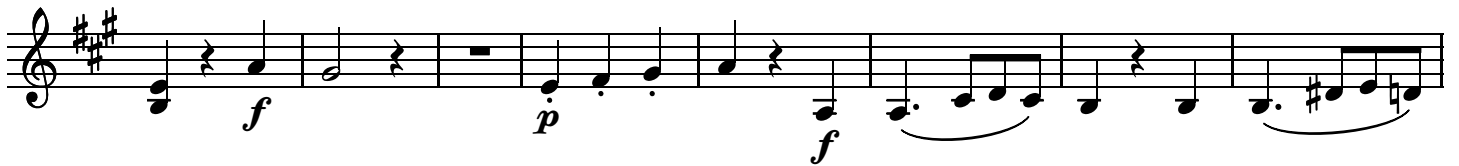
149



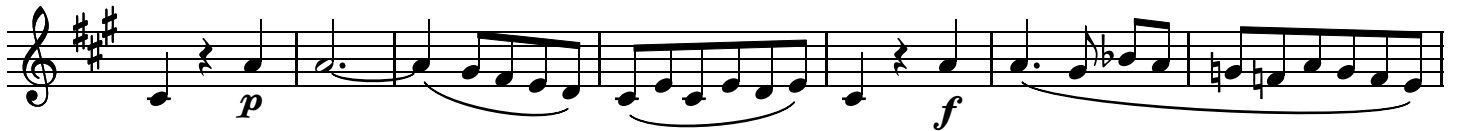
157



165



173



180



187



194



201

209

215

224

233

241

247

256

263

Minuetto.

Violino II.

f *p* *f* *p* *p* *f*

10

p 2

19

f *p*

27

p *p* 2

36

f

44

p *f*

52

p

59

f

67

Trio.

75

83

91

(f) (decresc.) p

98

Andante.

M.D.C.

Violino II.

17

24

31

37



41



48



52



56



65



80



Detailed description of the musical score: The score consists of ten staves of music in treble clef. The first four staves (measures 37-51) are in the key of D major. The fifth staff (measures 52-55) changes to the key of D minor. The sixth staff (measures 56-64) returns to D major. The seventh staff (measures 65-72) continues in D major. The eighth staff (measures 73-79) changes to the key of B minor. The ninth and tenth staves (measures 80-83) continue in B minor. Dynamics include *fp*, *f*, *p*, *cresc.*, and *f*. Performance instructions include first and second endings, and triplets.

86

p *f*

92

p *p*

99

f

106

tr *tr* *p*

113

f

121

tr *p* *p*

129

f

137

f *p*

146

f *p*

154

p *cresc.* *f*

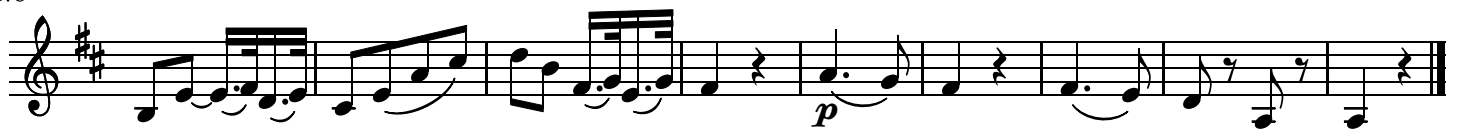
162



170



178

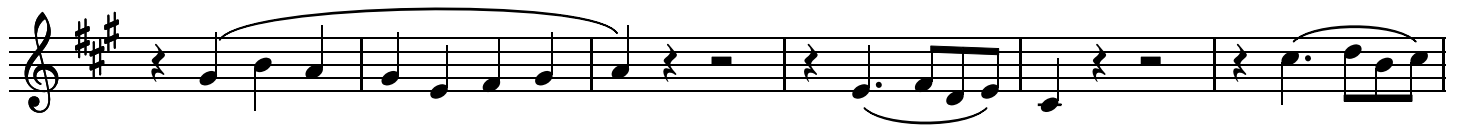


Allegro.

Violino II.



6



12



18



24



30



37



43

50

57

65

71

77

84

93

99

105

110

p

117

124

128

132

cresc.

136

f *p*

142

(f) *p*

149

156

162

f

168

174

181

188

195

201

212

219

226

233

238



244



249



256

