

Violoncello y  
Contrabajo

# Concierto para Piano

en La Mayor No. 12,  
K. 414

Wolfgang Amadeus Mozart

Transcrip. Gory

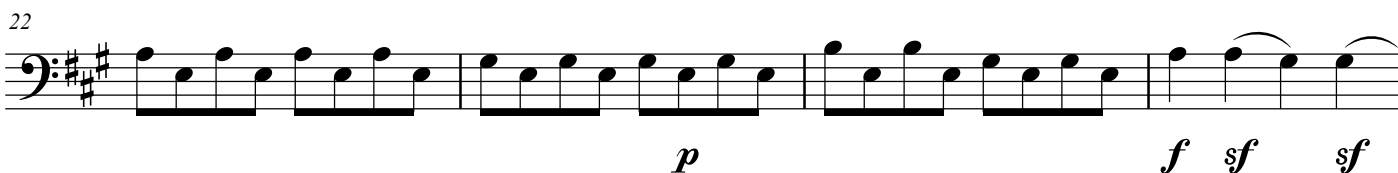
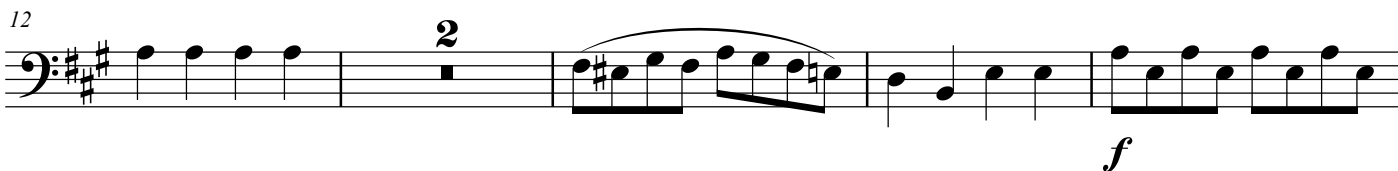
info@Gory.jazztel.es

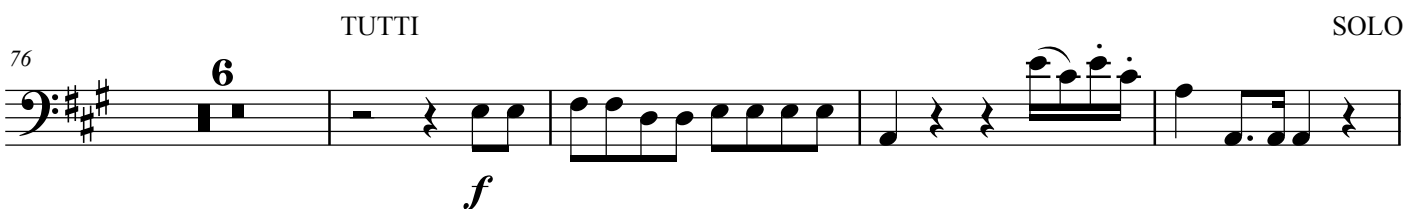
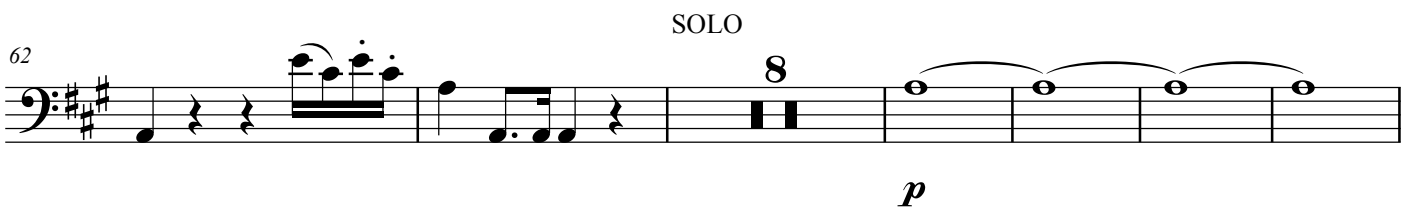
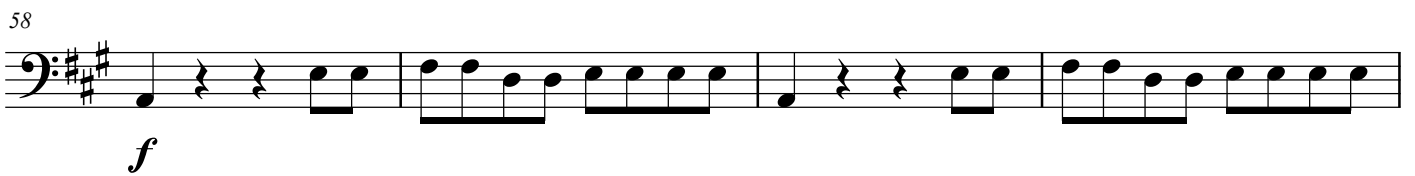
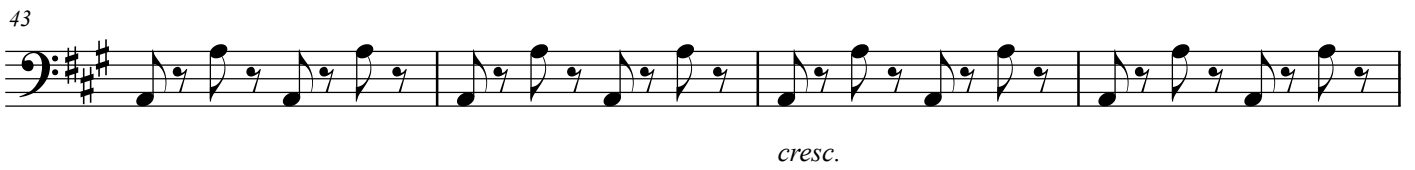
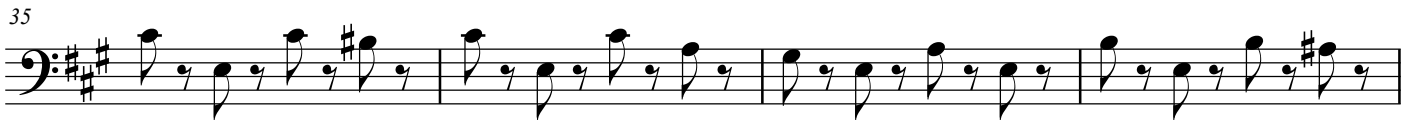
Allegro

TUTTI



*p*





86

*p*

97

*f* *p*

105

111

TUTTI

*p*

117

SOLO

127

*p* *f*

144

TUTTI

*p cresc.* *f*

148

SOLO

153

8

*p*

165

3

*p* *mf* *p* *mf* *p*

174

180

186

192

TUTTI

*sfp* *p*

197

203

SOLO

TUTTI

6

*f*

215 SOLO

6

224

*p*

230

235 SOLO

4

244 TUTTI

6

*p*

255 SOLO

7

*p*

266

271

*fp fp* *fp fp*

277

3

*f p f p*

*cresc.*

283

*f p f p*

*cresc.*

287

*f f*

*cresc.*

TUTTI

291

*f f*

295

*f f*

Andante

TUTTI

*f p f p*

*sotto voce*

7

*f p f p*

13

*f p*

SOLO

19

*pp* *p*

32

*3*

42

*2*

TUTTI

50

*f*

SOLO

55

*p* *p*

66

*p* *p*

74

*7* *3*

88

*2*

96 TUTTI TUTTI

*f* *f*

Musical notation for measures 96-100 in bass clef, key of D major. Measure 96 starts with a forte (*f*) dynamic. Measures 97-100 continue with a forte (*f*) dynamic. The notation includes eighth notes, quarter notes, and a half note with a fermata.

101

*p* *pp*

Musical notation for measures 101-104 in bass clef, key of D major. Measure 101 starts with a piano (*p*) dynamic. Measures 102-104 continue with a piano-piano (*pp*) dynamic. The notation includes sixteenth notes, eighth notes, and quarter notes.

Allegretto TUTTI

*p* *fp*

Musical notation for measures 105-110 in bass clef, key of D major, 2/4 time signature. The tempo is marked Allegretto. The dynamic starts piano (*p*) and ends fortissimo-piano (*fp*). The notation includes eighth notes and quarter notes.

7

*p*

Musical notation for measures 111-116 in bass clef, key of D major. The dynamic is piano (*p*). The notation includes eighth notes, quarter notes, and a half note.

14

*f*

Musical notation for measures 117-122 in bass clef, key of D major. The dynamic is forte (*f*). The notation includes eighth notes, quarter notes, and a half note.

19 SOLO TUTTI

17 *p*

Musical notation for measures 123-128 in bass clef, key of D major. Measure 123 is marked SOLO. Measure 124 has a fermata for 17 measures. Measure 125 is marked TUTTI. The dynamic is piano (*p*). The notation includes eighth notes, quarter notes, and a half note.

41 SOLO

8 *p* 3

Musical notation for measures 129-134 in bass clef, key of D major. Measure 129 is marked SOLO. Measure 130 has a fermata for 8 measures. Measure 131 has a fermata for 3 measures. The dynamic is piano (*p*). The notation includes eighth notes, quarter notes, and a half note.

59

12

Musical notation for measures 135-140 in bass clef, key of D major. Measure 136 has a fermata for 12 measures. The notation includes eighth notes, quarter notes, and a half note.



TUTTI

78

6 7

*f*

96

*sf*

103

*p*

SOLO

7

116

*p*

TUTTI

SOLO

2

126

4

139

3

150

12 4 4

*sf*

TUTTI

174

*f*

SOLO TUTTI SOLO

181

5

*p* *f* *f* *fp*

This block contains the first staff of music, starting at measure 181. It is divided into three sections: 'SOLO' for measures 181-182, 'TUTTI' for measures 183-185, and 'SOLO' for measures 186-188. The notation includes a five-measure rest in measure 183. Dynamic markings are *p* (piano) for the first 'SOLO' section, *p* (piano) for the 'TUTTI' section, and *f* (forte), *f* (forte), and *fp* (fortissimo piano) for the second 'SOLO' section. The key signature has two sharps and the time signature is 4/4.

194

*fp* *fp* *f* *p* *f*

This block contains the second staff of music, starting at measure 194. It includes a seven-measure rest in measure 196. Dynamic markings are *fp* (fortissimo piano), *fp* (fortissimo piano), *f* (forte), *p* (piano), and *f* (forte) across the measures. The notation features a variety of rhythmic patterns, including eighth and sixteenth notes. The key signature has two sharps and the time signature is 4/4.

208

This block contains the third staff of music, starting at measure 208. It features rapid sixteenth-note passages in measures 208, 209, and 211, followed by a more melodic line in measures 210 and 212. The notation ends with a double bar line in measure 213. The key signature has two sharps and the time signature is 4/4.