

W.A. Mozart
Mass in C Major

Corno I in C.

Kyrie.

Andante maestoso.

Più andante. (Più vivo.)

fp < *fp* < *fp* < *f* *p* Sopran

17 *fp* < *fp* < *fp* < *f* *f* *p*

Gloria.

Allegro con spirito.

f *p* *f* *p* *f*

14 *p*

26 *f* *p*

38 *f*

48 *p*

59 *p* *p*

76 *f*

95 *f*

2

Corno I in C.

114 Bassi *f* **F**

123 *p* 1 2 3 4 5 *f*

135 **G** *p* *f* *p* *f*

148 **H** *p* 3

160 *f*

170 *p* 1 2 1

181 *f* 1

191

Credo.

Allegro molto.

f

7

15 **K** *fp fp fp fp f*

25 **2 L**

Corno I in C.

36

43 M

52 N

58 Adagio. 3 0 4 Oboi P p f

72 Tempo I. f

78 Q *fp fp*

88 *fp fp f*

96 R 12 Viol. I. S p f

115

122 T *fp fp fp fp fp decresc. f*

131 U 1

138 V

145

Detailed description: This page contains the musical score for the first horn part in C major. It consists of ten staves of music, numbered 36 to 145. The score includes various musical notations such as notes, rests, and dynamic markings. Key markings include 'Adagio.' at measure 58, 'Tempo I.' at measure 72, and 'Viol. I.' at measure 96. Dynamic markings range from *p* (piano) to *f* (forte) and *fp* (fortissimo). There are also performance instructions like 'decresc.' and '1' (first ending). The letters M, N, Q, R, S, T, U, and V are placed above the staves at measures 43, 52, 78, 96, 122, 131, 138, and 145 respectively, likely indicating specific musical phrases or sections. The score is written in a single treble clef throughout.

Corno I in C.

Sanctus.

Andante maestoso.

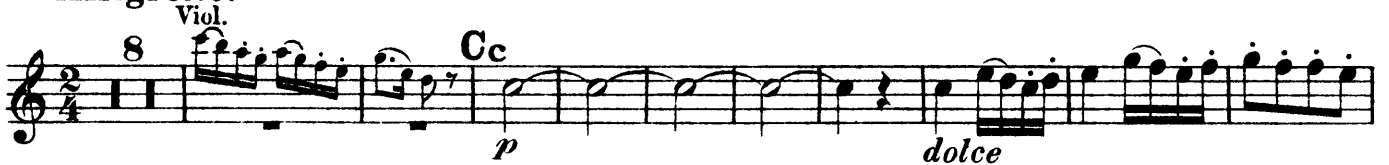


Allegro assai.



Allegretto.

Benedictus.



Allegro assai.



Allegretto.



Corno I in C.

83 **Allegro assai.**

91

Agnus Dei.

Andante sostenuto.

26

49

Ob.I. Gg

Violini

Hh5

Andante con moto.

57

Sopr. Ii

dolce

p cresc.

f

Allegro con spirito.

71

tr

f

Allegro con spirito.

78

tr

f

Allegro con spirito.

85

f

Allegro con spirito.

92

f

Allegro con spirito.

97

Mm

1

dolce

f

Allegro con spirito.

102

f

W.A. Mozart
Mass in C Major

Corno II in C.

Kyrie.

Andante maestoso.

Più andante. (Più vivo.)

Musical notation for the beginning of the Kyrie. It features a Soprano line with dynamics such as *fp* and *p*. The tempo is marked *Andante maestoso.* and *Più andante. (Più vivo.)*. The notation includes a treble clef, a common time signature, and various note values and rests.

Musical notation for the end of the Kyrie and the beginning of the Gloria. It features a Soprano line with dynamics such as *fp* and *f*. The tempo is marked *Andante maestoso.*. The notation includes a treble clef, a common time signature, and various note values and rests.

Gloria.

Allegro con spirito.

Musical notation for the beginning of the Gloria. It features a treble clef, a 3/4 time signature, and dynamics such as *f* and *p*. The notation includes various note values and rests.

Musical notation for the first section of the Gloria, marked with 'A'. It features a treble clef, a 3/4 time signature, and dynamics such as *p*. The notation includes various note values and rests.

Musical notation for the second section of the Gloria, marked with 'B'. It features a treble clef, a 3/4 time signature, and dynamics such as *f* and *p*. The notation includes various note values and rests.

Musical notation for the third section of the Gloria, marked with 'C'. It features a treble clef, a 3/4 time signature, and dynamics such as *f*. The notation includes various note values and rests.

Musical notation for the fourth section of the Gloria, marked with '2'. It features a treble clef, a 3/4 time signature, and dynamics such as *p*. The notation includes various note values and rests.

Musical notation for the fifth section of the Gloria, marked with '7'. It features a treble clef, a 3/4 time signature, and dynamics such as *p*. The notation includes various note values and rests.

Musical notation for the sixth section of the Gloria, marked with 'D' and '8'. It features a treble clef, a 3/4 time signature, and dynamics such as *f*. The notation includes various note values and rests.

Musical notation for the seventh section of the Gloria, marked with 'E' and '9'. It features a treble clef, a 3/4 time signature, and dynamics such as *f*. The notation includes various note values and rests.

Corno II in C.

114 Bassi **F**

123 1 2 3 4 5

135 **G** *p* *f* *p* *f*

149 **H** 3

164 **I** 2

175 1

185 1

192

Credo:

Allegro molto.

7

13 **K** *fp* *fp* *fp* *fp*

22 2

Corno II in C.

31 L

39 M

47 1

57 N Adagio. $\frac{3}{4}$ P

72 Tempo I. *f*

80 Q *fp fp fp fp f*

90 R 12

109 Viol. I. S *p* *f*

118 T *fp fp fp fp*

126 U 1 *fp decresc.* *f*

136 V

144

Detailed description: This page contains the musical score for the second horn part in C major. It consists of ten staves of music, numbered 31 to 144. The score includes various musical notations such as clefs, notes, rests, and dynamic markings. Key markings include 'L', 'M', 'N', 'P', 'Q', 'R', 'S', 'T', 'U', and 'V'. The tempo changes from 'Adagio' (3/4 time) to 'Tempo I.' (4/4 time). Dynamic markings include *f*, *fp*, *p*, and *fp decresc.*. A first violin part is also indicated at measure 109.

Corno II in C.
Sanctus.

Andante maestoso.

7 **Aa**

15 **Allegro assai.**

27 **Bb**

38 **attacca**

Allegretto. **Benedictus.**

Viol. I.

8 **Cc**

20 **p dolce**

32 **Dd**

46 **Ee**

60 **Allegro assai.**

72 **Allegretto.**

Ff

Corno II in C.

83 **Allegro assai.**

91

Agnus Dei.

Andante sostenuto.

4 5 10 Gg^{Ob. I} 1

28 11 Viol. Hh5 1

Andante con moto.

53 7 Ii dolce cresc.

Allegro con spirito.

70 f tr

Allegro con spirito.

76 Kk p f

Allegro con spirito.

84 p

Allegro con spirito.

91 L1 f p

Allegro con spirito.

98 Mm 1 dolce

Allegro con spirito.

102