

# Konzert für Klarinette in A dur

K.622

W.A. MOZART

Viola

## I

Allegro

1 *p*

7 *f* *p*

12 *f*

17

23 **A** *p*

28 *f*

33

37 *p*

41 **B** *f*

45 *p*

51 *f* Solo 2

59 *p* 1

67

74 **C** Tutti *f* *p* Solo

81 *f* *p* 3

92 **D** 3 Tutti *f*

100 Solo 1 *p*

108

115 **E** 8 *p*

131

138

146 1

153 Tutti *f*

158

164 *p* *f*

171 Solo *p*

178

186 **F** Tutti *f*

193 Solo *p*

201 3

213 **G** *f* *p*

220 1 Tutti *f*

228 *p* *f*

235 *p* *f*

242

247 Solo *p* 1

Detailed description of the musical score: The score is for the Viola part of a concert. It consists of ten staves of music, numbered 158 to 247. The key signature is G major (one sharp). The time signature is 3/4. The music includes various rhythmic patterns, including eighth and sixteenth notes, and rests. Dynamics range from piano (*p*) to forte (*f*). There are several performance markings: 'Solo' appears above measures 171 and 193; 'Tutti' appears above measures 186 and 220; 'F' and 'G' are boxed and placed above measures 186 and 213 respectively; '1' and '3' are placed above measures 186 and 201 respectively. The score ends with a final measure (247) marked with a '1'.

253 **1**

262 **H** Tutti *f*

270 Solo *p*

280 **I** 3 Tutti *f* Solo **1**

290 *p*

298 **1** **1**

310 **K** *p*

320

325

333 *tr*

340 Tutti *f*

347

353



II

Adagio



12



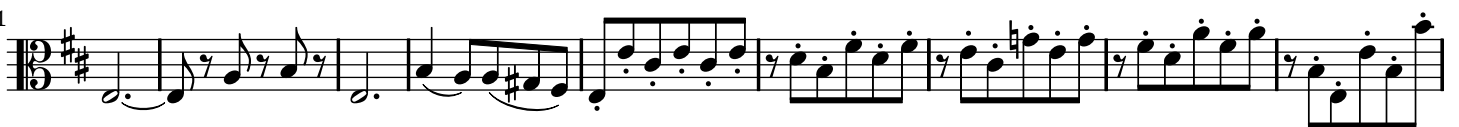
22



30



41



L

50



(Cad.)

59



73



M

81



89



## III

## Rondo - Allegro

6 *p*

7 *f* Tutti

14 *f* Solo *p*

21

28 *f* Tutti

35 Solo *f* Tutti Solo *p*

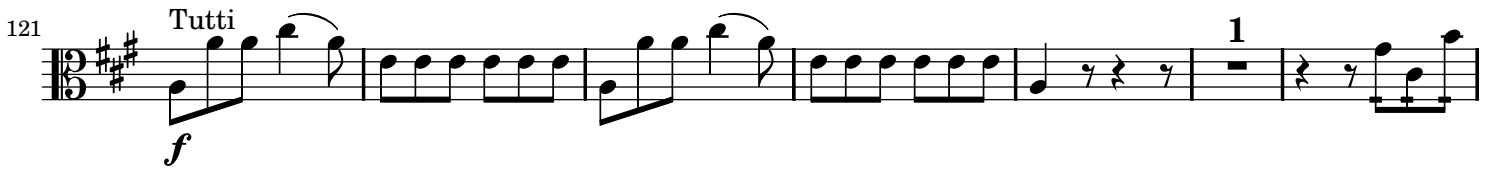
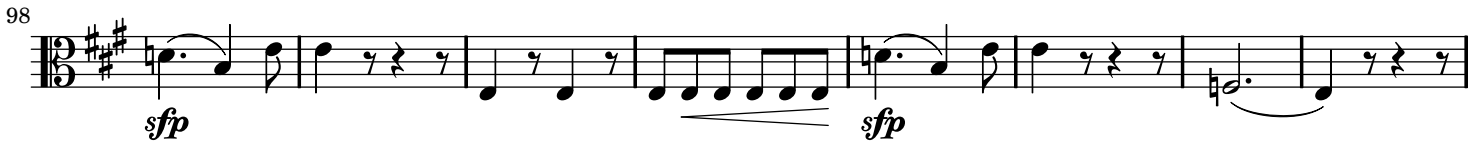
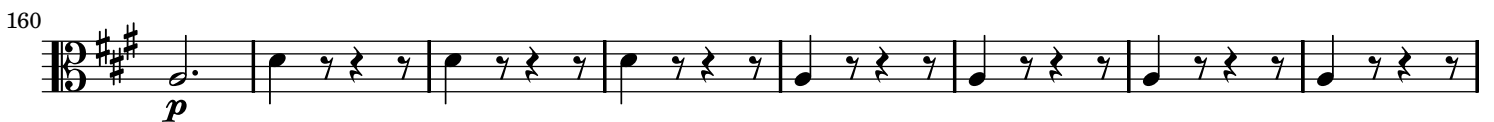
46 *f* Tutti

53 Solo *p* 4 2

66

73 *p* Tutti Solo 4

84

**P****Q**

**R**

186 *f* 4 5

202

210

218 **S** *p* *pp* *p*

226 *sfp*

233 *sfp* *p*

241

248

254 *Tutti* *p* *f* *p*

260 *Solo* *f* *p* *p*

266



273 Tutti

280 Solo Tutti Solo

291 Tutti

298 Solo

306

313

319

326

333

340 Tutti

347