

Bastien and Bastienne

Comic Opera in One Act

Viola

Wolfgang Amadeus Mozart, K. 50

Intrada Allegro

The musical score for the Viola part of the Intrada consists of ten staves of music. The key signature is one sharp (F#) and the time signature is 3/4. The music is marked 'Allegro'. The dynamic markings are as follows:

- Staff 1: *p* (piano), *fp* (fortissimo piano)
- Staff 2: *fp*, *fp*, *f* (forte)
- Staff 3: *p*
- Staff 4: *fp*, *fp*, *fp*, *f*
- Staff 5: *p*
- Staff 6: *fp*
- Staff 7: *p*, *fp*
- Staff 8: *fp*, *fp*
- Staff 9: *p*, *pp* (pianissimo)

Orch. B. 1275.

NOTE: These parts have been edited so as to agree with the English Vocal Score and the Stage Guide obtainable from Associated Music Publishers, Inc., as well as with the original German.

It should be noted that the *rehearsal numbers* have been chosen from among the many action cues to be found in the Stage Guide, and since only a few of these needed to be included in the orchestra parts, the *rehearsal numbers are not in consecutive numerical order, and do not always fall on the first beat of the measure.* Accordingly, it should be understood by all concerned that "Start at No. 16", for example, means "Start on the first beat of the measure in which No. 16 occurs".

Viola

N°1 Aria

Andante un poco Adagio

p

6

9

14

18

Recit. 22

Recit. I

Engl. Version

Bass

Liebe. 23 Bass

fare-well.

N°2 Aria

Andante

f *p* *f* *p* *fp*

fp

6

f *p* *fp*

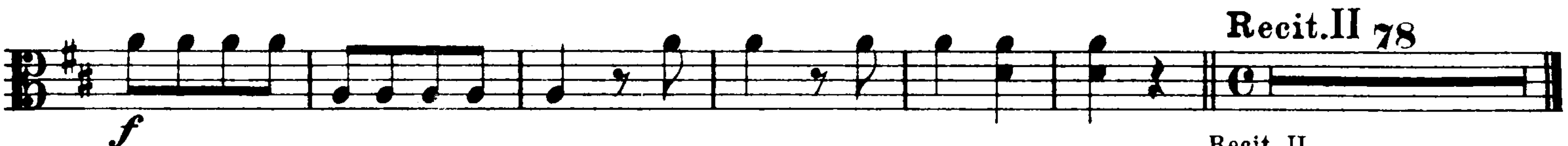
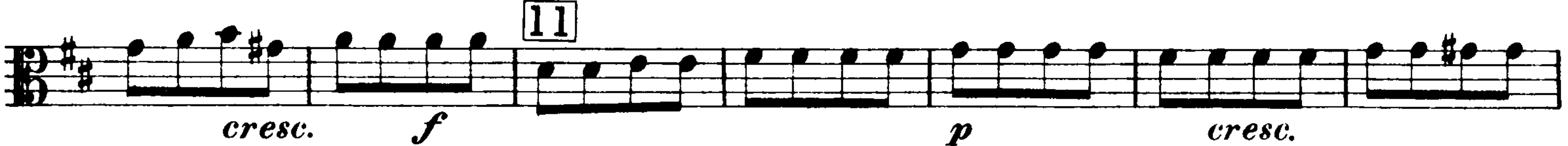


N° 3 (Allegro)



N° 4 Aria

Allegro



Recit. II 78

N° 5 Aria

Tempo grazioso

p

f *fp*

fp *pp* *fp* *pp* *fp*

f *fp* *fp* *fp*

fp

fp *f* *p*

fp *fp* *f* *p*

f *fp* *fp*

f

Recit. IIa* 17

N° 6 Aria**

Allegro moderato

fp

p

(A)

*Omitted in the English version.

**Omitted in the "Salzburg version".

Recit. III₄₁

Recit. III
 Engl. Version

Nº 7. Duetto
Allegro

Nº 8 Aria
Allegro

2

p

3

f *p*

5

f

7

p *f* *p*

10

f *p*

12

cresc. f

Nº 9 Aria
Moderato

f *p* *tr*

7

fp *fp* *fp* *fp*

fp *fp* *fp*

Musical notation for measures 11 through 16. Measure 11 is marked *fp*. Measure 13 is marked *f*. Measure 16 is marked *f*. The key signature is one sharp (F#).

N° 10 Aria
Andante maestoso

Musical notation for the Aria, measures 1 through 24. The key signature is two flats (Bb, Eb). Measure 6 is marked *p*. Measure 15 is marked *p*. Measure 17 is marked *f*. Measure 19 is marked *p* and includes a fermata with an asterisk (*). Measure 24 is marked *f*.

Orch. B. 1275.

*In the "Salzburg version" a few spoken words are interpolated at this point.

N° 11 Aria*

Tempo di Menuetto

N° 12 Aria †

Andante

Orch. B. 1275.

*The first 8 measures are omitted in the "Salzburg version".

**Omitted in the "Salzburg version".

†The first 6 measures are omitted in the "Salzburg version".

f p fp fp f

N° 13 Aria

Adagio maestoso

Allegro

f p f p f p f

9

p f p

Grazioso un poco Allegretto

mf p mf p f p fp

1 *

Adagio

Allegro

f p mf p mf p fp

1

1

*In the "Salzburg version" the Aria ends here.

Viola

N° 14 Recit.

Arioso

N° 15 Duetto*

Allegro moderato

Adagio 17 (a tempo)

*The first 4 measures are omitted in the "Salzburg version".

Viola

21 *p*

fp *fp*

24 *p* *fp* *fp*

29 *f* *f* *fp*

31 **Andantino** *fp* *fp p* *fp* *fp*

32 *cresc.* *f*

p

36 *f*

p *f* *p*

f *p* *f*

41 *p* *fp* *fp* *fp*

