

# TRIALTI

ALTO 1

Pierre MONTREUILLE  
2019

♩ = 120

2

3

A

12

B

18

C

23

27

29

32

34

38 D ♩ = 60 4

48

54 E ♩ = 120

60 3

67

# TRIALTI

ALTO 2

Pierre MONTREUILLE  
2019

$\text{♩} = 120$

9 **A**

15 **B**

20

23 **C**

27

31

37 **D**  $\text{♩} = 60$  4

47 E  $\text{♩} = 120$

59

64

# TRIALTI

ALTO 3

Pierre MONTREUILLE  
2019

$\text{♩} = 120$

2

3

10

A 2

16

B

21

C

26

32

34

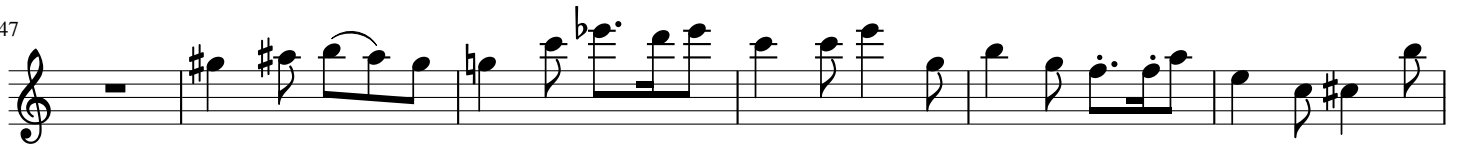
2

39

D  $\text{♩} = 60$

6/8

47



53

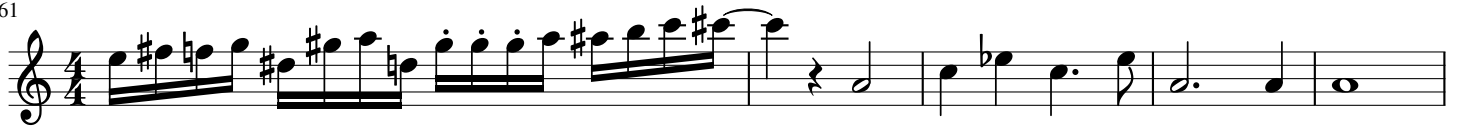


58

**E** ♩ = 120



61



66

