

Fest - Marsch zur Schiller-Feier

G. Meyerbeer

Allegretto Marcato

*doce et avec délicatesse* *p*

*A*

*ff*

*B* *p dolce*

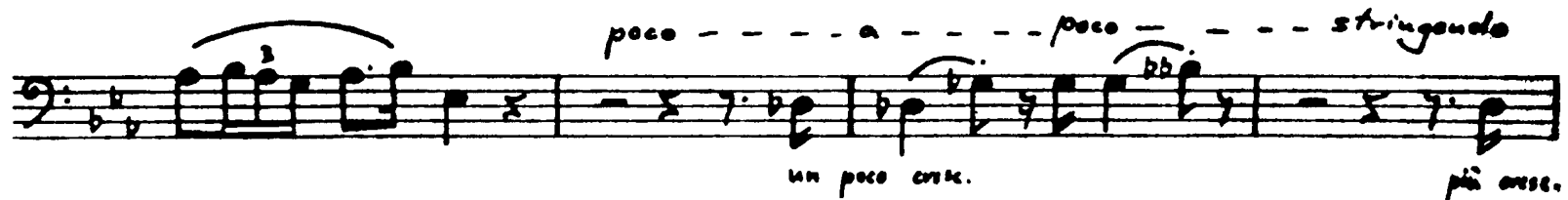
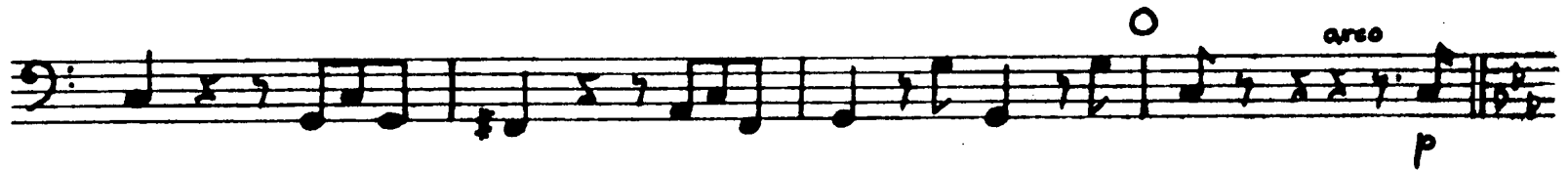
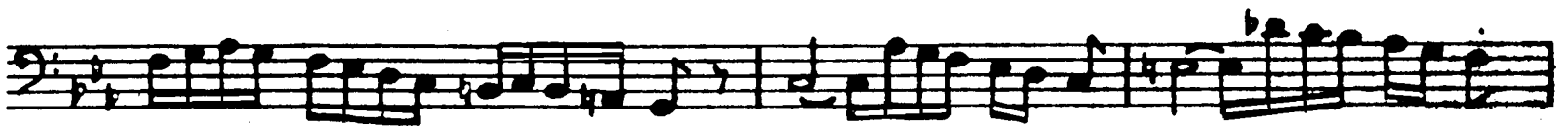
*cresc.* *cresc. sempre di più*

*C* *p*

*D* *piu. sempre*

The musical score for Bass consists of 15 measures, organized into four systems of two staves each. The notation includes various rhythmic values, slurs, and dynamic markings.

- Measure 1:** Starts with a bass clef and a key signature of two flats. The first staff contains a melodic line with eighth and sixteenth notes. The second staff contains a rhythmic accompaniment. A dynamic marking *dim.* is placed below the first staff.
- Measure 2:** Continues the melodic and rhythmic patterns. A dynamic marking *arco* is placed above the second staff.
- Measure 3:** Similar to the previous measures. A dynamic marking *un poco cresc.* is placed below the second staff.
- Measure 4:** The melodic line features a trill. A dynamic marking *cresc.* is below the first staff, *dim.* is below the second staff, and *mf* is below the first staff. A *trill* marking is above the trill.
- Measure 5:** The melodic line features a trill. A dynamic marking *cresc. più cresc. molto cresc.* is placed below the second staff.
- Measure 6:** Continues the melodic and rhythmic patterns. A dynamic marking *G* is placed above the first staff.
- Measure 7:** Continues the melodic and rhythmic patterns. A dynamic marking *cresc.* is below the first staff.
- Measure 8:** Continues the melodic and rhythmic patterns. A dynamic marking *p* is below the first staff.
- Measure 9:** Continues the melodic and rhythmic patterns. A dynamic marking *p cresc.* is below the first staff.
- Measure 10:** Continues the melodic and rhythmic patterns. A dynamic marking *mf* is below the first staff.
- Measure 11:** Continues the melodic and rhythmic patterns. A dynamic marking *H* is placed above the first staff.
- Measure 12:** Continues the melodic and rhythmic patterns. A dynamic marking *J* is placed above the first staff.
- Measure 13:** Continues the melodic and rhythmic patterns. A dynamic marking *15* is placed above the first staff.
- Measure 14:** Continues the melodic and rhythmic patterns. A dynamic marking *M* is placed above the first staff.
- Measure 15:** Continues the melodic and rhythmic patterns. A dynamic marking *mf* is below the first staff.



Q Un poco string. (non pochissimo)



