

Symphonie en sol mineur

Violon 2

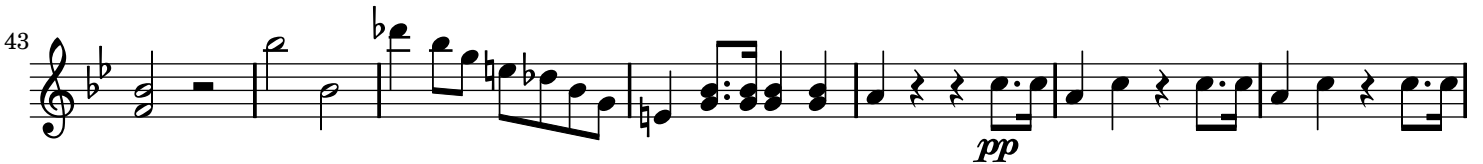
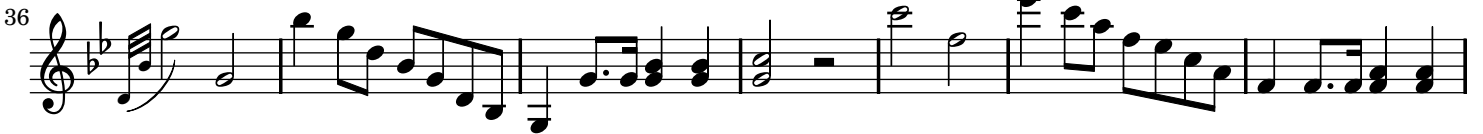
Etienne MEHUL

I

Allegro



A



B



64 *fp*

71

77

82 *ff* **C**

88

93

98 *p*

103 *f*

D 111

117

123 *p*

129

133

139

145

151

158

162

167

174

180

186

ff

tr

sfz

ff

sfz

p

fp

E

Detailed description: This page of a musical score for Violon 2 contains ten staves of music, numbered 129 to 186. The key signature is one flat (B-flat major or D minor). The music features a variety of rhythmic patterns, including eighth and sixteenth notes, and rests. Dynamic markings include fortissimo (ff), sforzando (sfz), piano (p), and fortissimo-piano (fp). Trills (tr) are indicated above certain notes. A box containing the letter 'E' is placed above the staff at measure 145. The notation includes slurs, ties, and accents.

192

ff

This musical staff contains measures 192 through 197. It begins with a treble clef and a key signature of two flats. The music features a series of eighth-note patterns with various accidentals, including naturals and sharps. A dynamic marking of *ff* (fortissimo) is placed below the staff.

G

198

p

This musical staff contains measures 198 through 208. It continues the melodic line with eighth-note patterns and some rests. A dynamic marking of *p* (piano) is placed below the staff.

209

f

This musical staff contains measures 209 through 220. It features a double bar line with a '2' above it, indicating a second ending. The music is marked with a dynamic of *f* (forte).

221

This musical staff contains measures 221 through 230. It continues the melodic development with eighth-note patterns and rests.

231

pp

This musical staff contains measures 231 through 236. The music is marked with a dynamic of *pp* (pianissimo).

237

cresc.

This musical staff contains measures 237 through 243. The music is marked with a dynamic of *cresc.* (crescendo).

H

244

ff

pp

This musical staff contains measures 244 through 255. It features a treble clef and a key signature of two flats. The music is marked with a dynamic of *ff* (fortissimo) and then *pp* (pianissimo).

256

cresc.

This musical staff contains measures 256 through 262. The music is marked with a dynamic of *cresc.* (crescendo).

263

ff

This musical staff contains measures 263 through 275. The music is marked with a dynamic of *ff* (fortissimo).

276

This musical staff contains measures 276 through 281. It concludes the page with a final cadence.

II

Andante

A

Musical notation for measures 1-12, starting with a piano (*p*) dynamic marking. The music is in 2/4 time and features a melodic line with slurs and accents.

Musical notation for measures 13-25, marked with a boxed letter **B**. The music continues with a melodic line and includes slurs and accents.

Musical notation for measures 26-39, marked with a boxed letter **C**. The music continues with a melodic line and includes slurs and accents.

Mineur

C

Musical notation for measures 40-53, marked with a boxed letter **D**. The music continues with a melodic line and includes slurs and accents.

D

E

Musical notation for measures 54-65, marked with a boxed letter **E**. The music continues with a melodic line and includes slurs and accents.

F

Musical notation for measures 66-76, marked with a boxed letter **F**. The music continues with a melodic line and includes slurs and accents.

G

Musical notation for measures 77-86, marked with a boxed letter **G**. The music continues with a melodic line and includes slurs and accents.

H Majeur

Musical notation for measures 87-98, marked with a boxed letter **H**. The music continues with a melodic line and includes slurs and accents.

Musical notation for measures 99-107, marked with a boxed letter **I**. The music continues with a melodic line and includes slurs and accents.

I

Musical notation for measures 108-115, marked with a boxed letter **I**. The music continues with a melodic line and includes slurs and accents. It features fortissimo (*ff*) and piano (*p*) dynamics.

122 K

131

fp *fp*

139

fp *fp* *mf*

149 L

156 M

ff

162

f > *mf* > *p* > > *f*

169

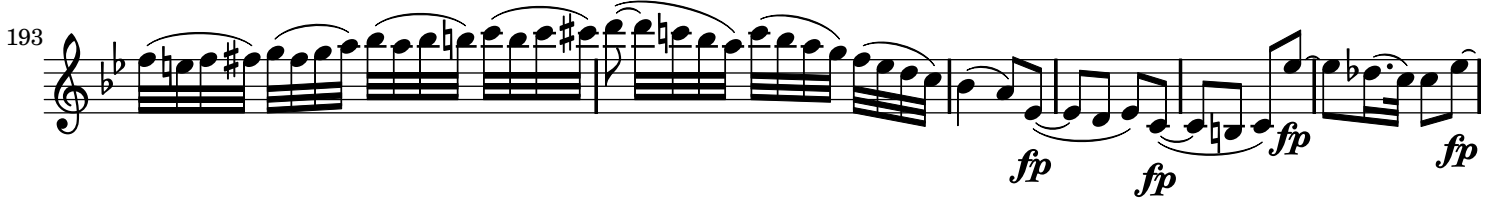
172

175 N

178

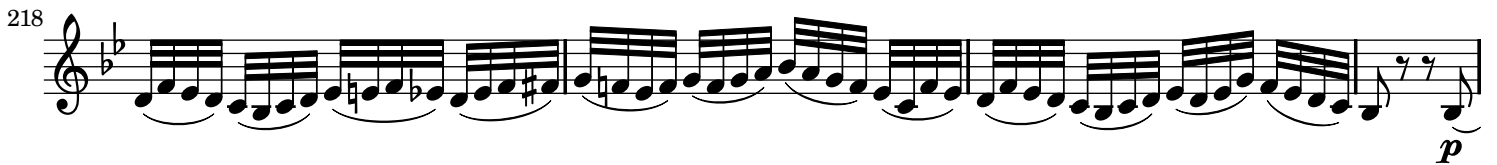
181 

186 

193 

199 

207 

218 

222 

III

Allegro moderato



13 

27 

Trio

Musical score for Violon 2, Trio section, measures 3 to 152. The score is written in treble clef with a key signature of one sharp (F#). It features various dynamics including *p*, *f*, *mf*, *ff*, *fp*, and *sfz*. Performance instructions include *Arco* and *Pizz.*. The score includes triplet markings (3) and a double bar line with repeat dots at measure 56. A section of 13 measures is indicated above measure 132.

IV

Allegro Agitato

Musical score for Violon 2, Allegro Agitato section, measures 1 to 7. The score is written in treble clef with a key signature of two flats (Bb). It begins with a dynamic of *p* and includes a section of 7 measures.

17 *fp*

26 **A** *ff* *ff*

35

44

52 *fp* *p* *f*

58 *fp* *p*

65 *Pizz.* *Arco* *dolce* *f*

74 *p* *pp*

82 *p* *dolce*

90 *mf* *f*

99 Musical staff 99: Treble clef, key signature of two flats, 4/4 time. Measures 99-108. Dynamics: *pp*

109 Musical staff 109: Treble clef, key signature of two flats, 4/4 time. Measures 109-117. Dynamics: *ff*

118 Musical staff 118: Treble clef, key signature of two flats, 4/4 time. Measures 118-125. Dynamics: *pp*, *ff*

126 Musical staff 126: Treble clef, key signature of two flats, 4/4 time. Measures 126-133. Dynamics: *ff*

134 Musical staff 134: Treble clef, key signature of two flats, 4/4 time. Measures 134-145. Dynamics: *fp*, *f*, *fp*, *f*, *fp*, *ffp*

146 Musical staff 146: Treble clef, key signature of two flats, 4/4 time. Measures 146-173. Dynamics: *ffp*, *cresc. poco a poco*

174 Musical staff 174: Treble clef, key signature of two flats, 4/4 time. Measures 174-182. Dynamics: *dolce*, *p*

183 Musical staff 183: Treble clef, key signature of two flats, 4/4 time. Measures 183-189. Dynamics: *ff*

190 Musical staff 190: Treble clef, key signature of two flats, 4/4 time. Measures 190-196. Dynamics: *ff*

197 Musical staff 197: Treble clef, key signature of two flats, 4/4 time. Measures 197-202. Dynamics: *ff*

203 Musical staff 203: Treble clef, key signature of two flats, 4/4 time. Measures 203-211. Dynamics: *sfz*, *sfz*, *sfz*

212 Musical staff 212: Treble clef, key signature of two flats, 4/4 time. Measures 212-218. Dynamics: *sfz*, *sfz*, *sfz*

218 *sfz sfz sfz sfz p*

225 *Pizz. Arco dolce f p*

236 *p*

244 *p dol. mf f*

254

264 *pp ff*

272 *pp*

281 *ff*

290

299

309