

String Quartet in C Major Op.74 no.1 2nd Movement

Franz Josef Haydn

Violoncello

The first system of the cello part consists of five measures. It begins with a quarter note G2, followed by quarter notes A2, B2, and C3. The fifth measure contains a quarter note G2, a quarter rest, and a quarter note F2.

6

The second system of the cello part consists of six measures. It begins with a quarter note G2, followed by quarter notes A2, B2, and C3. The sixth measure contains a quarter note G2, a quarter rest, and a quarter note F2. The seventh measure contains a quarter note G2, a quarter note A2, and a quarter note B2. The eighth measure contains a quarter note C3, a quarter note B2, and a quarter note A2. The ninth measure contains a quarter note G2, a quarter note F2, and a quarter note E2. The tenth measure contains a quarter note D2, a quarter note C2, and a quarter note B1. The eleventh measure contains a quarter note A1, a quarter note G1, and a quarter note F1.

12

The third system of the cello part consists of six measures. The first measure contains a quarter note G2, a quarter note A2, and a quarter note B2. The second measure contains a quarter note C3, a quarter note B2, and a quarter note A2. The third measure contains a quarter note G2, a quarter note F2, and a quarter note E2. The fourth measure contains a quarter note D2, a quarter note C2, and a quarter note B1. The fifth measure contains a quarter note A1, a quarter note G1, and a quarter note F1. The sixth measure contains a quarter note E1, a quarter note D1, and a quarter note C1. Dynamics markings *fz*, *fz*, and *p* are placed below the first, second, and third measures respectively.

18

The fourth system of the cello part consists of six measures. The first measure contains a quarter note G2, a quarter note A2, and a quarter note B2. The second measure contains a quarter note C3, a quarter note B2, and a quarter note A2. The third measure contains a quarter note G2, a quarter note F2, and a quarter note E2. The fourth measure contains a quarter note D2, a quarter note C2, and a quarter note B1. The fifth measure contains a quarter note A1, a quarter note G1, and a quarter note F1. The sixth measure contains a quarter note E1, a quarter note D1, and a quarter note C1. A fingering '5' is placed above the final measure.

28

fz

34

fz fz fz dim. p

40

p p

48

pp f p cresc. cresc.

54

fp

60

f *p*

66

72

78

fz *fz* *p*

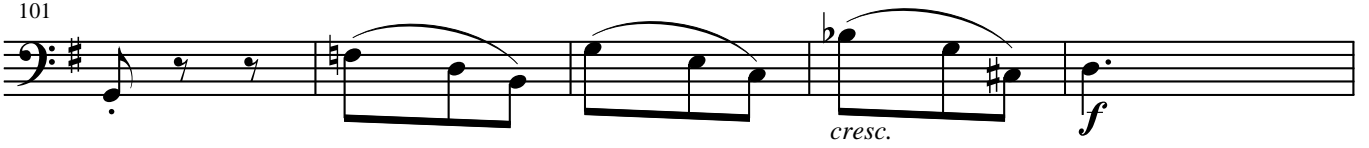
85

p *fz* *p*

96



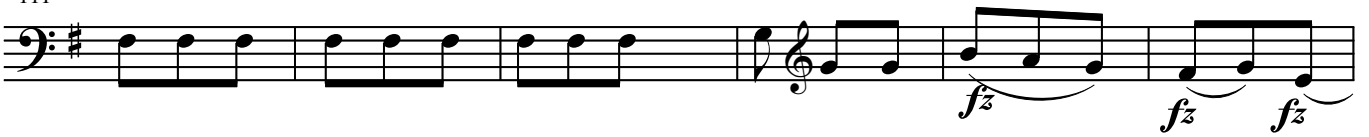
101



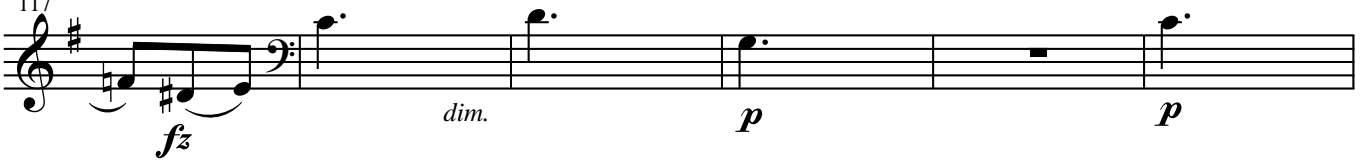
106



111



117



123

p *pp*

Detailed description: This system contains measures 123 to 126. It is written in bass clef with a key signature of one sharp (F#). Measure 123 starts with a quarter note G4, followed by eighth notes A4 and B4, and a quarter rest. Measure 124 has a whole rest with a '2' above it. Measure 125 has a quarter note C5, followed by eighth notes D5 and E5, and a quarter rest. Measure 126 has a whole rest with a '2' above it, followed by a quarter note F#5, and eighth notes G5 and A5.

131

f *mezza voce*

Detailed description: This system contains measures 131 to 136. It is written in bass clef with a key signature of one sharp (F#). Measure 131 starts with a quarter note G4, followed by quarter notes A4, B4, and C5. Measure 132 has a quarter note D5, followed by quarter notes E5 and F#5. Measure 133 has a quarter note G5, followed by quarter notes A5 and B5. Measure 134 has a quarter note C6, followed by quarter notes D6 and E6. Measure 135 has a quarter note F#6, followed by quarter notes G6 and A6. Measure 136 has a quarter note B6, followed by quarter notes C7 and D7.

137

p

Detailed description: This system contains measures 137 to 142. It is written in bass clef with a key signature of one sharp (F#). Measure 137 has a quarter note G4, followed by quarter notes A4, B4, and C5. Measure 138 has a quarter note D5, followed by quarter notes E5 and F#5. Measure 139 has a quarter note G5, followed by quarter notes A5 and B5. Measure 140 has a quarter note C6, followed by quarter notes D6 and E6. Measure 141 has a quarter note F#6, followed by quarter notes G6 and A6. Measure 142 has a quarter note B6, followed by quarter notes C7 and D7.

143

cresc. *f*

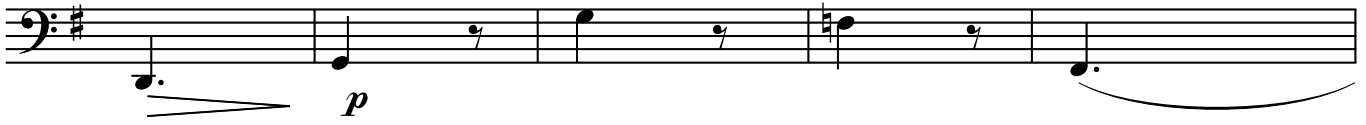
Detailed description: This system contains measures 143 to 148. It is written in treble clef with a key signature of one sharp (F#). Measure 143 has a quarter note G4, followed by quarter notes A4, B4, and C5. Measure 144 has a quarter note D5, followed by quarter notes E5 and F#5. Measure 145 has a quarter note G5, followed by quarter notes A5 and B5. Measure 146 has a quarter note C6, followed by quarter notes D6 and E6. Measure 147 has a quarter note F#6, followed by quarter notes G6 and A6. Measure 148 has a quarter note B6, followed by quarter notes C7 and D7.

149

p *fz*

Detailed description: This system contains measures 149 to 154. It is written in bass clef with a key signature of one sharp (F#). Measure 149 has a quarter note G4, followed by quarter notes A4, B4, and C5. Measure 150 has a quarter note D5, followed by quarter notes E5 and F#5. Measure 151 has a quarter note G5, followed by quarter notes A5 and B5. Measure 152 has a quarter note C6, followed by quarter notes D6 and E6. Measure 153 has a quarter note F#6, followed by quarter notes G6 and A6. Measure 154 has a quarter note B6, followed by quarter notes C7 and D7.

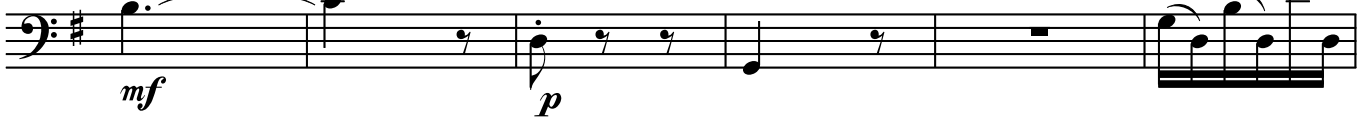
155



160



165



171

