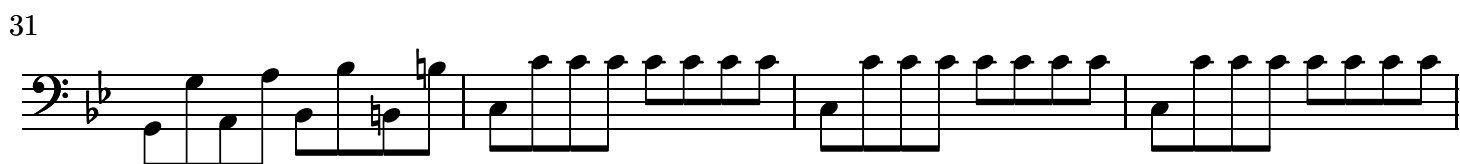
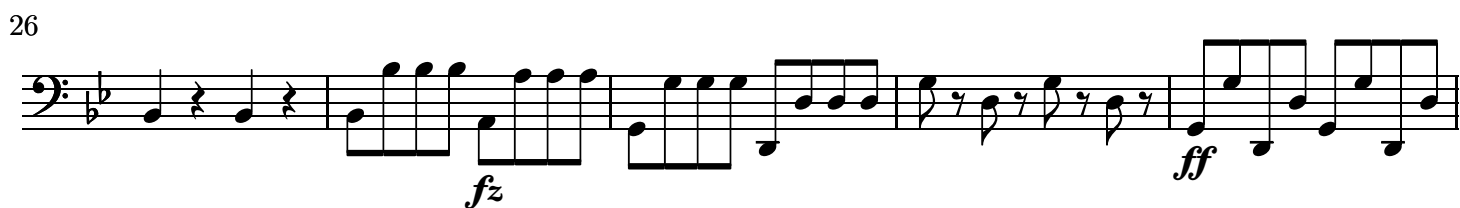


String Quartet in B-flat major ("Sunrise")

Op. 76 No. 4

FRANZ JOSEPH HAYDN (1732-1809)

ALLEGRO CON SPIRITO



50



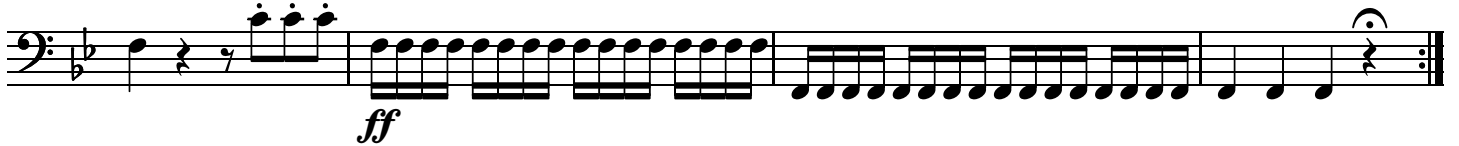
54



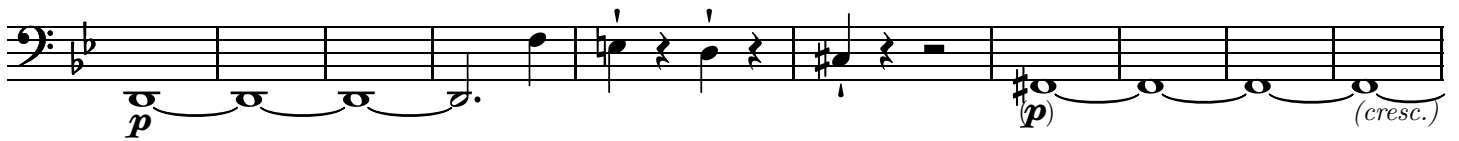
59



65



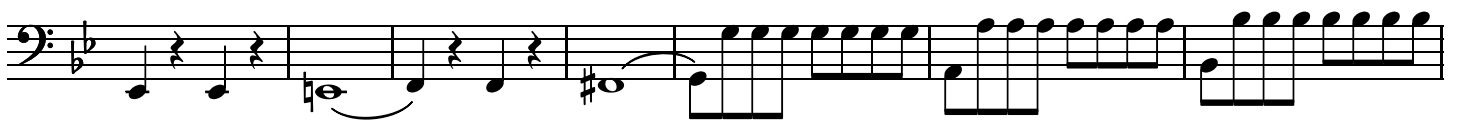
69



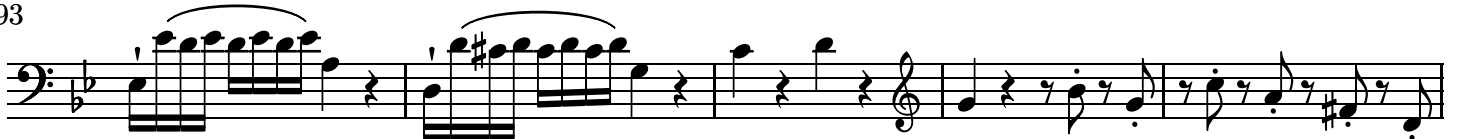
79



86



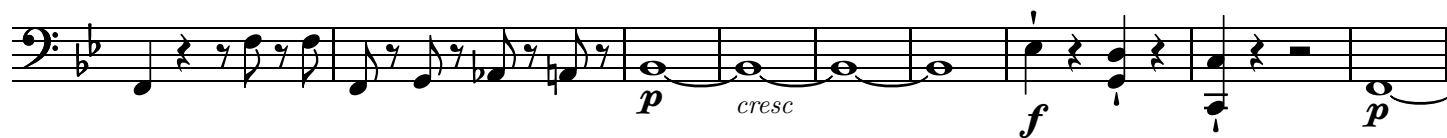
93



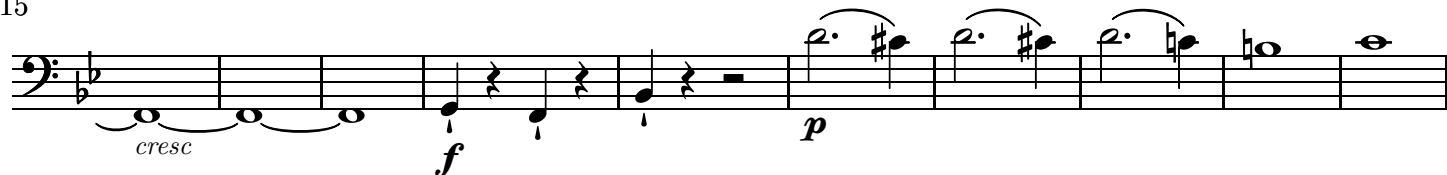
98



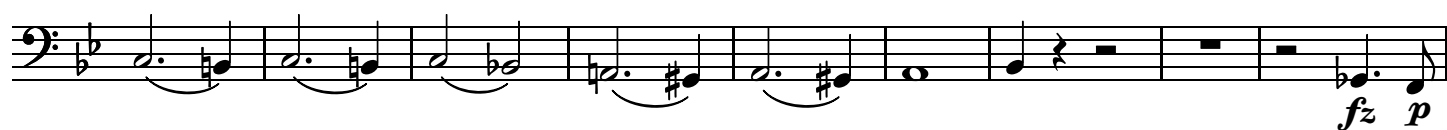
106



115



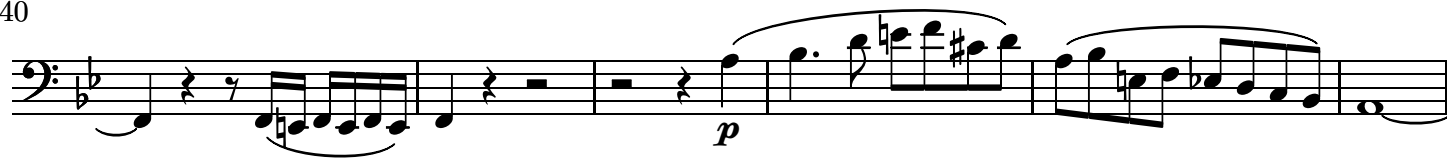
125



134



140



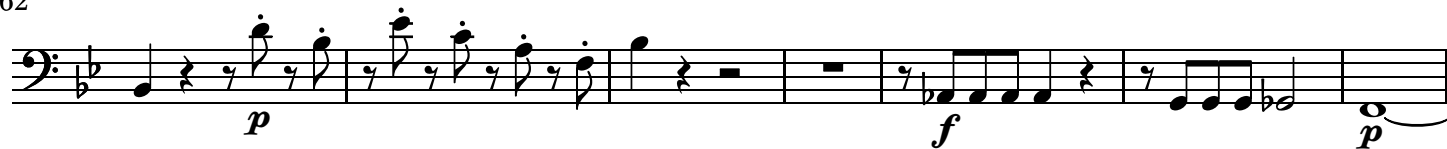
146



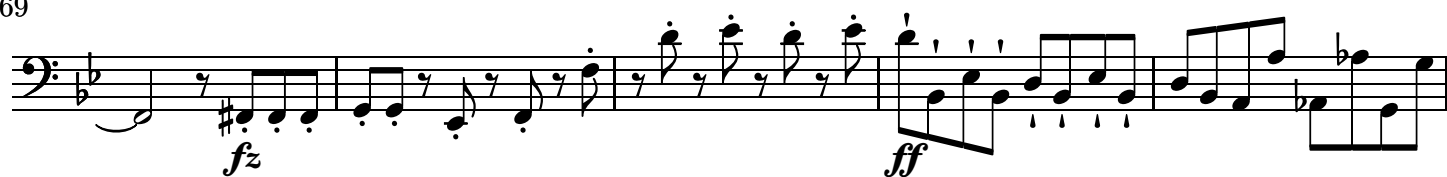
155



162



169



174

Measures 174-183: Bass clef, 3/4 time signature. Measure 174 starts with a half note G2. Measure 175 has a half note F2 with a *p* dynamic. Measures 176-183 feature a melodic line with various dynamics and articulations, including accents and slurs.

184

Measures 184-193: Bass clef, 3/4 time signature. Measures 184-193 consist of a continuous sixteenth-note pattern, starting with a *ff* dynamic.

ADAGIO

Violoncello.

Measures 1-11: Bass clef, 3/4 time signature. Measures 1-11 feature a melodic line with slurs and accents, including a *p* dynamic in measure 10.

12

Measures 12-20: Bass clef, 3/4 time signature. Measures 12-20 feature a melodic line with slurs and accents, including a *p* dynamic in measure 18 and *fz* dynamics in measures 19 and 20.

21

Measures 21-28: Bass clef, 3/4 time signature. Measures 21-28 feature a melodic line with slurs and accents, including a *p* dynamic in measure 22 and triplets in measures 23 and 24.

29

Measures 29-36: Bass clef, 3/4 time signature. Measures 29-36 feature a melodic line with slurs and accents, including a *p* dynamic in measure 30 and a *f* dynamic in measure 36.

37

Measures 37-44: Bass clef, 3/4 time signature. Measures 37-44 feature a melodic line with slurs and accents, including a *p* dynamic in measure 38 and a *f* dynamic in measure 44.

45

Measures 45-51: Bass clef, 3/4 time signature. Measures 45-51 feature a melodic line with slurs and accents, including a *p* dynamic in measure 46 and a *f* dynamic in measure 51.

52

Measures 52-59: Bass clef, 3/4 time signature. Measures 52-59 feature a melodic line with slurs and accents, including a *pizz.* dynamic in measure 52 and *p* and *fz* dynamics in subsequent measures.

60

pp

68

MENUETTO. ALLEGRO

Violoncello.

f fz

3 5

24

p f

35

p

42

f fz

1. 2.

52 Trio.

fz fz fz

66

fz fz fz 4 fz

81

Musical notation for measures 81-83 in bass clef. The music features a series of eighth and sixteenth notes with slurs. Dynamic markings include *fz* (forzando) and *fz* (forzando).

94

Musical notation for measures 94-96 in bass clef. Measure 94 has a *fz* marking. Measure 95 has a *p* (piano) marking. Measure 96 has a second ending bracket labeled '2'.

Menuetto D.C.

FINALE. ALLEGRO, MA NON TROPPO

Violoncello.

Musical notation for measures 1-6 in bass clef. Measure 3 has a *mezza voce* marking. Measure 6 has a *fz* marking.

7

Musical notation for measures 7-14 in bass clef. Measure 7 has a *fz* marking. Measure 14 has a second ending bracket labeled '2'.

15

Musical notation for measures 15-20 in bass clef. Measure 15 has a *f* (forte) marking.

20

Musical notation for measures 20-27 in bass clef. Measure 20 has a *p* marking. Measure 27 has a *fz* marking.

28

Musical notation for measures 28-33 in bass clef. Measure 33 has a *fz* marking.

Minore

Musical notation for measures 34-39 in bass clef. Measure 34 has a *f* marking.

40

Musical notation for measures 40-45 in bass clef. Measure 40 has a *fz* marking. Measure 41 has a *p* marking. Measure 44 has a *f* marking. Measure 45 has a *p* marking.

45

f fz p f

51

fz p f

57

p f p f

63

fz fz 6

75

f fz fz

82

fz 2

90

95

p f fz 3

105

fz tr p Più allegro 3

115

123

128

Più presto

134

6

146

p *f*

153

4

(cresc.) *ff* *ff*

162

167