

George Frideric Handel
Messiah
Mozart Version

FAGOTTO I.
Erster Theil.

Ouverture.

Grave.

f

tr. *Allegro.* 85 *No. 1. Recit. Larghetto.* 29
7

No. 2. Aria.

Andante.

6 *p cresc. f*

tr. *f p*

C 1 *p* 2 *p*

D *tr.* *E* *p cresc. f*

p *f*

f p tr.

tr. *cresc.*

p cresc. f p tr.

p cresc. f tr.

ten. Adagio.

[Tempo I.

FAGOTTO I.

3 5 1 6 *f* *f* *f* A

3 14 2 3 5 *f* *f* *f* B

14 10 4 *f* *p* *f* C *Larghetto.*

6 2 1 2 2 *f* *p* *f* *p* D *Prestissimo.*

8 2 *f* *p* E *Adagio.*

6 *p* *f* *p* *f* F *Tempo I.*

Nº 6. Coro. Allegro.

15 *f* A

4 *f* *mf* *f* B

4 *mf* *f* C

4 *f* D

f

Nº 7. Recit. Alto.

5 *f* A *Gottmituns.*

FAGOTTO I.

Nº 14. Recit.

Andante.

Recit.

Soprano.

Andante
con moto.

Nº 15. Coro.

Allegro.

4 7 8 8

sal- te der Herr.

2 A

B

C D

1 2 2

1

p pp

Nº 16. 17 und 18 tacet.

Nº 19. Coro.

Andante.

Soprano.

3 A 12 B 1

C

D E

p

FAGOTTO I.

Nº 24. Coro.
Allegro moderato.

f

1

1 A 6

3 B 6

C

2

6 D 7 E 3

F

8

G

Adagio. 10

dim.

Nº 25 bis 28. tacet.

Nº 29. Recit.

Sopr.

Er ist da hin aus dem Lande der Lebenden, und um die Sunde seines Volkes ward er ge - plagt

Nº 30. Aria.

Andante Larghetto.

A 2

B

C

D

Nº 31. Coro.

A tempo ordinario.

A

B

FAGOTTO I.

bist Du es!

Nº 33 und 34 bleiben bei der Aufführung fort.

Nº 35. Coro.
Andante Allegro.

10 N° 36. Aria. *)
Larghetto.

FAGOTTO I.

Musical notation for N° 36. Aria. *) in bass clef, 12/8 time signature. The piece is marked 'Larghetto'. It consists of three staves of music. The first staff begins with a dynamic marking of *p*. The second staff contains a first ending marked '2' and a section marked 'A'. The third staff contains a first ending marked '1', a section marked '3 B', and a final ending marked '5'.

N° 37. Coro.
A tempo ordinario.

Musical notation for N° 37. Coro. in bass clef, 3/4 time signature. It is marked 'A tempo ordinario'. The notation shows a single staff of music with a first ending marked '38' and a common time signature 'C'.

N° 38. Aria.
Allegro. 1

Musical notation for N° 38. Aria. in bass clef, 6/8 time signature. It is marked 'Allegro. 1'. The piece consists of five staves of music. The first staff begins with a dynamic marking of *f* and contains five first endings numbered 1 through 5. The second staff contains a section marked 'A' and a first ending marked '10'. The third staff contains a section marked 'B' and a first ending marked '1'. The fourth staff contains a section marked 'D' and a first ending marked '10'. The fifth staff contains a section marked 'E' and a first ending marked '22'. The piece concludes with the word 'Fine.' and the instruction 'Da Capo.'

N° 39. Coro.
Larghetto e staccato.

N° 40. Recit.
Tenore.

Musical notation for N° 39. Coro. and N° 40. Recit. in bass clef, 3/4 time signature. N° 39 is marked 'Larghetto e staccato' and begins with a first ending marked '67'. N° 40 is marked 'Tenore' and begins with a common time signature 'C'.

Aber der im Himmel wohnet, er lachet ih_rer Wuth, und der Herr, er spot_tet ih_rer.

N° 41. Aria. **)
Andante.

Musical notation for N° 41. Aria. **) in bass clef, 3/4 time signature. It is marked 'Andante'. The piece consists of four staves of music. The first staff begins with a dynamic marking of *f* and contains a section marked 'A' and a first ending marked '4'. The second staff contains a section marked 'B 2' and a first ending marked '4'. The third staff contains a section marked 'D 1' and a first ending marked '2'. The fourth staff contains a section marked 'E 1' and a first ending marked '5'.

FAGOTTO I.

Two staves of musical notation in bass clef, G major, 4/4 time. The first staff begins with a series of eighth notes, followed by a half note, and then a series of eighth notes with a dynamic marking of *f*. The second staff continues with similar rhythmic patterns and includes a dynamic marking of *f*.

Nº 42. Coro.

A series of ten staves of musical notation in bass clef, G major, 4/4 time. The first staff begins with a dynamic marking of *f*. The second staff includes a dynamic marking of *ff* and a section marker 'A'. The third staff includes a section marker 'B'. The fourth staff includes a section marker 'C'. The fifth staff includes a section marker 'D' with a '3' below it. The sixth staff includes a section marker 'E' and a trill marking 'tr'. The seventh staff includes a section marker 'F'. The eighth staff includes a section marker 'G'. The ninth staff includes a section marker 'II'. The tenth staff concludes with the tempo marking 'Adagio.' and a double bar line.

FAGOTTO I.

Dritter Theil.

Nº 43. Aria.
Larghetto.

Musical score for No. 43, Aria, in G major, 3/4 time. The score consists of ten staves of music. It begins with a *p* dynamic and includes several trills (*tr.*). Section markers A through I are placed above the staves. Dynamics range from *p* to *f*, with a *cresc.* marking. The tempo is *Larghetto*.

Nº 44. Quartetto e Coro.

Quartetto.
Grave.

Coro.
Allegro.

Musical score for No. 44, Quartetto e Coro, in G major, common time. The score is divided into two parts: Quartetto and Coro. The Quartetto section is marked *Grave* and begins with a *p* dynamic. The Coro section is marked *Allegro* and begins with a *f* dynamic.

Quartetto.
Grave.

Coro.
Allegro.

Continuation of the musical score for No. 44, Quartetto e Coro. It shows the Quartetto section in *Grave* tempo and the Coro section in *Allegro* tempo.

FAGOTTO I.



Nº 47. Recit.

Alto.

Nº 45 und 46 tacet.

Nº 48. Duetto.

Andante.



Dann wird erfüllt das Wort des Wahrhaftigen: der Tod ist in den Sieg verschlungen.

Attacca subito.

Nº 49. Coro.

Andante.



Nº 50. Aria.*)

Risoluto. 7



FAGOTTO I.

Measures 1-14 of the Bassoon I part. The score includes dynamics such as *f*, *p*, and *cresc. f*. Measure numbers 2, 5, 6, 8, 14, and II are marked. Fingerings 1, 2, 3, and 4 are indicated above notes in measure 14.

Nº 51. Coro.
Largo.

Measures 1-4 of the Coro part. The score starts with a forte (*f*) dynamic and a Largo tempo marking.

Andante.

Measures 5-8 of the Coro part. The score features a Largo tempo marking.

Adte.

Allegro.

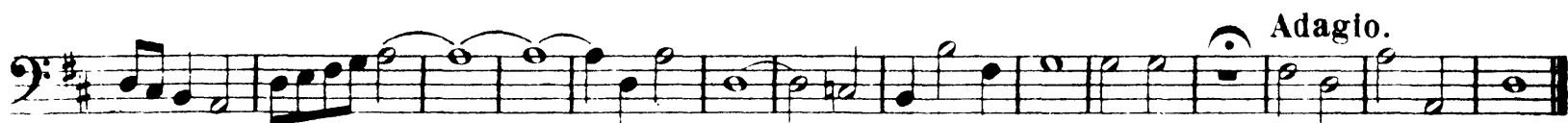
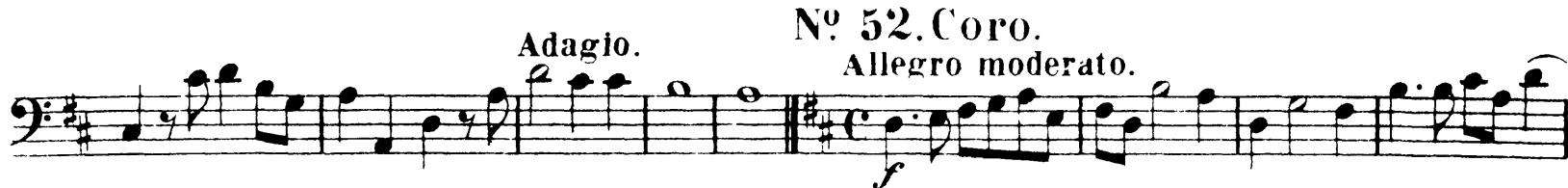
Measures 9-12 of the Coro part. The score features an Allegro tempo marking.

Measures 13-16 of the Coro part. The score features a first ending bracket.

Measures 17-20 of the Coro part. The score features a section labeled 'A'.

Measures 21-24 of the Coro part. The score features a section labeled 'B'.

FAGOTTO I.



George Frideric Handel
Messiah
Mozart Version

FAGOTTO II.

Erster Theil.

Overture.

Grave. *f*

Allegro modto. 85

Nº 1. Recit. Larghetto. 29

1. 2. *allacca* 7

Nº 2. Aria.

Andante.

6 *p cresc. f f p*

A 1 3

B 1 *f p*

C 1 6 D

E *p cresc. f p p*

F *f f p*

G *f tr.*

H 1 *p cresc. f p ten. p*

Adagio.

I Tempo I. 3 *p cresc. f*

Nº 3. Coro.

Allegro. *f*

SOLO. *mf tr.* 7

FAGOTTO II.

A 5 SOLO. *f*

B *mf* *f*

C 1 2 5

D *f*

1 2

E

2

F

Adagio. *f* **Nº 4. Recit.**
Allegro maestoso.

30

Nº 5. Aria.
Larghetto.

f 3

5 1 6 3 *f* **A**

14 *f* **Prestissimo.** 3 5 *f* **B**

14 *f* **C** *f* *p* **Larghetto.** 4 *f*

FAGOTTO II.

Musical notation for Fagotto II, measures 1-12. Includes dynamic markings *p* and *f*, and notes D, E, F, G, H. Includes the instruction *attacca subito il Coro*.

Nº9. Coro.

Musical notation for Coro, measures 13-23. Includes dynamic markings *f* and *p*, and notes A, B.

Nº10. Recit.

Andante Larghetto.

Nº11. Aria.

Larghetto.

Musical notation for Recitativo and Aria, measures 24-33. Includes dynamic markings *f* and *p*, and notes A, B, C, D. Includes measure numbers 23, 3, 5, 3, 1, 1, 4, 1, 1, 3, 2.

FAGOTTO II.

E

Nº 12. Coro. Nº 13. Sinfonia pastorale.
 Andante Allegro. Larghetto e mezzo piano.

99

Nº 14. Recit. Recit. Soprano Andante con moto.

4 7 8 8

D.C. al Fine. *salv. . . der Herr.*

Nº 15. Coro.

Allegro.

A B C D

Nº 16, 17 und 18 tacet.

6 N^o19. Coro.
Allegro.

FAGOTTO II.

Soprano.

Sein Joch ist sanft, leicht sei ne Last, und leicht ist sei ne Last.

Fagotto.

3 A 12 B₁

p

C

1

D

2 E

f

Zweiter Theil.

N^o20 Coro.
Largo.

1

f *p*

ppsc. *f*

A

B

p *f* *p*

C

1

f

#2

p *f* *tr*

N^o21. Aria.
Largo.

2

2 A 6 B

6 *f* *p* *p* *f*

3 C 5

D 2

p *p*

FAGOTTO II.

E 18

Nº 22. Coro.
Largo e staccato.

Nº 23. Coro.
Alla breve. Moderato. Adagio.

Nº 24. Coro.
Allegro moderato.

Nº 31. Coro.
A tempo ordinario.

Nº 25 bis 30 tacet.

Violino I.

Hoch thut euch auf,

FAGOTTO II.

D
f
E
F
G
H
No 32. Recit.

No 35. Coro.

No 33 und 34 bleiben bei der Aufführung fort.

Andante Allegro.

f
A
B

No 37. Coro.

No 36 tacet.

A tempo ordinario. Allegro.

38
f
1
2
3
4
5

FAGOTTO II.

Measures 1-11. Dynamics: *f*, *p*. Rehearsal marks: A, B, C, D.

Nº 39. Coro. Nº 40. Recit.

Measures 22-67. Dynamics: *f*, *p*. Rehearsal mark: A.

Fine. D.C. al Fine.

67

Aber der im Himmel wohnet; er lachet ihrer Wuth und der Herr, er spottet ihrer.

Nº 41. Aria.)*
Andante.

Measures 1-22. Dynamics: *f*, *p*. Rehearsal marks: A, B, C, D, E.

Nº 42. Coro.

Measures 1-22. Dynamics: *ff*. Rehearsal marks: A, B, C, D.

FAGOTTO II.

E

F

G

H

Adagio.

Dritter Theil.

Nº 44. Quartetto e Coro.

Nº 43. Aria.

Larghetto.

Quartetto.

Grave.

Coro.

Allegro.

164

p

f Quartetto.
Grave.

Coro.
Allegro.

Nº 45, 46 und 47 tacet.

FAGOTTO II.

Nº 48. Duetto.

Andante.

Nº 49. Coro.

Andante.

22

Vcello. *attacca subito:* *f*

A

B 1

C

D

E

Nº 50. Aria.

Risoluto.

Adagio.

164

Nº 51. Coro.

Largo.

Andante.

f

Largo.

Andante.

Allegro.

1

FAGOTTO II.

1^o

A B C D E Adagio.

Nº 52. Coro.
Allegro moderato.

10 A B C D E Adagio.