

# Six Duo

FORMANT

*Vingt-Quatre Morceaux*

Pour Cor & Clarinette

*Composés & Dédiés*

*Aux Amateurs*

PAR GEORGES FUCHS

ŒUVRE 36.

PRIX 7.<sup>#</sup>10.<sup>s</sup>

*Propriété de l'Éditeur*

A PARIS

*Chez Imbault M.<sup>d</sup> de Musique, au Mont d'Or, Rue Honoré, N.<sup>o</sup> 200.*

*entre la Rue des Poulies, et la Maison d'Aligre.*

*Et Péristile du Théâtre de l'Opéra Comique, Rue Favart N.<sup>o</sup> 461.*

Nº. I.  
Andante

Musical score for No. 1, Andante. It consists of five staves of music in treble clef, with a key signature of one flat (B-flat) and a common time signature (C). The music features a variety of rhythmic patterns, including eighth and sixteenth notes, and rests.

Nº 2.  
Allegro

Musical score for No. 2, Allegro. It consists of three staves of music in treble clef, with a key signature of one flat (B-flat) and a 2/4 time signature. The music is characterized by a fast, rhythmic eighth-note pattern. The word "Chalu" is written below the second staff.

Nº 3.  
Minuetto

Musical score for No. 3, Minuetto. It consists of three staves of music in treble clef, with a key signature of one flat (B-flat) and a 3/4 time signature. The music features a mix of eighth and sixteenth notes. The word "Chalu" is written below the first staff, and "Clari" is written above the second staff.

Nº 4.  
Allemande

Musical score for No. 4, Allemande. It consists of one staff of music in treble clef, with a key signature of one flat (B-flat) and a 2/4 time signature. The music features a rhythmic eighth-note pattern.

Nº 5.  
Rondeau

Allegretto

Nº 6.  
Walse

Clarinette

Nº 7.  
Andante  
Grazioso

Nº 8.  
Minuetto

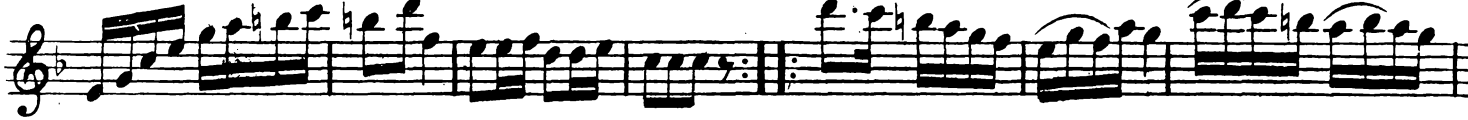
Allegro

Nº 9.  
Rondeau

Allegro



Nº IO.  
Allemande  
et Anglaise.



Nº 12.  
Walse

Musical score for No. 12, Walse, in 3/8 time signature. The piece consists of seven staves of music. The first staff begins with a treble clef and a key signature of one flat (Bb). The melody is characterized by eighth-note patterns with frequent slurs and ties. The piece concludes with a double bar line and repeat dots.

Nº 13.  
Menuetto

Musical score for No. 13, Menuetto, in 3/4 time signature. The piece consists of three staves of music. The first staff begins with a treble clef and a key signature of one flat (Bb). The melody features a mix of eighth and sixteenth notes. A dynamic marking of *pp* is present in the second staff. The piece concludes with a double bar line and repeat dots.

Nº 14.  
Allegro

Musical score for No. 14, Allegro, in 2/4 time signature. The piece consists of four staves of music. The first staff begins with a treble clef and a key signature of one flat (Bb). The melody is fast and rhythmic, primarily using eighth and sixteenth notes. The piece concludes with a double bar line and repeat dots.

Nº 15.  
Andante  
Moderato

Musical score for No. 15, Andante Moderato, in 3/8 time signature. The piece consists of two staves of music. The first staff begins with a treble clef and a key signature of one flat (Bb). The melody is slower and more melodic than the previous pieces. A dynamic marking of *pp* is present in the first staff. The piece concludes with a double bar line and repeat dots.

Musical staff with treble clef, key signature of one flat, and dynamic marking 'pp'. The staff contains a melodic line with various rhythmic values and articulation marks.

No. 16.  
Allemande.

Musical score for No. 16, Allemande, consisting of four staves. The first staff has a treble clef and a key signature of one flat. The second and third staves have a treble clef and a key signature of one flat. The fourth staff has a treble clef and a key signature of one flat. The score includes various musical notations such as notes, rests, and dynamic markings. A 'Fin' marking is present on the third staff, and a 'DC' marking is present on the fourth staff.

No. 17.  
Rondeau

Musical score for No. 17, Rondeau, consisting of eight staves. The first staff has a treble clef and a key signature of one flat. The second and third staves have a treble clef and a key signature of one flat. The fourth and fifth staves have a treble clef and a key signature of one flat. The sixth and seventh staves have a treble clef and a key signature of one flat. The eighth staff has a treble clef and a key signature of one flat. The score includes various musical notations such as notes, rests, and dynamic markings. A 'Chalu.' marking is present on the second staff, and a 'Clari.' marking is present on the third staff. A 'D.C.' marking is present on the sixth staff, and another 'D.C.' marking is present on the eighth staff.

Nº 18.  
Polonoise

Chalu.

Clari.

Chalu

Clari

Nº 19.  
Presto

Nº 20.  
Menuetto.



Nº 21.  
Andante

Nº 22.  
Rondeau

Allegro

Chalu.

Clari.

D.C.



Nº 23.  
Allemande

Musical score for Allemande No. 23, Clarinet. The piece is in 2/4 time, key of B-flat major. It consists of seven staves of music. The first staff begins with a treble clef, a key signature of one flat, and a 2/4 time signature. The music features a series of eighth-note patterns with slurs. The word "Fin" is written below the sixth staff. The seventh staff ends with a double bar line and a repeat sign, with "D.C." written above it.

Nº 24.  
Walse

Musical score for Walse No. 24, Clarinet. The piece is in 3/8 time, key of B-flat major. It consists of seven staves of music. The first staff begins with a treble clef, a key signature of one flat, and a 3/8 time signature. The music features a series of eighth-note patterns with slurs. The word "Fin" is written below the sixth staff. The seventh staff ends with a double bar line and a repeat sign, with "D.C." written above it.