

3

TRIOS

concertans

Pour Piano, Violon et Violoncelle.

DÉDIÉS À



SA MAJESTÉ

LEOPOLD I^{ER}

Roi des Belges

PAR

César Aug^{te} **FRANCK**, de Liège

op 1.

Partition et Parties séparées

Propriété des Éditeurs

Schubert & Co. Hambourg & Leipzig.

VIOLONCELLE.

♩ = 92.
ALLEGRO. *ff*
Piano

1 2 3

4 5 6

7 8 9

10 *Von* 11 *Vcelle*
con forza.

2 11
con forza. *ff*

3 *dim.*

multo cres.
p 1 2 3 4 5 6

ff *p*

cres *ff*

ff *Piano.*
1 2 3

4 *v*celle 2

p *mf*

cres *ff*

dim *p dolor.*

a tempo.

un poco rall *p espre.*

cres

pizz. *p*

molto cres

ff

dim. *p* 1

2 1 2

mf *f*

VIOLONCELLE.

molto cres.

ff

p dolce.

dolce. *p*

rall un poco

a tempo.

pp

le tremolo aussi serré que possible.

cres

pp molto cres

cres

pp *ff*

dim *pp*

di mi nu en do

VIOLONCELLE.

5

sostenuto.

pp

molto cres.

sempre cres.

fff

largement.

ff

ff espres con molto forza.

cres

rit

a tempo

fff tumultuoso.

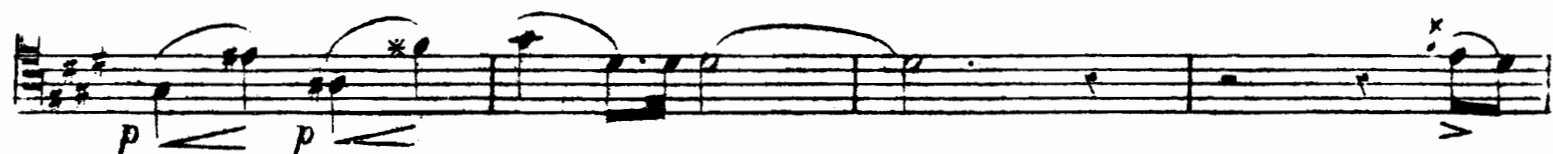
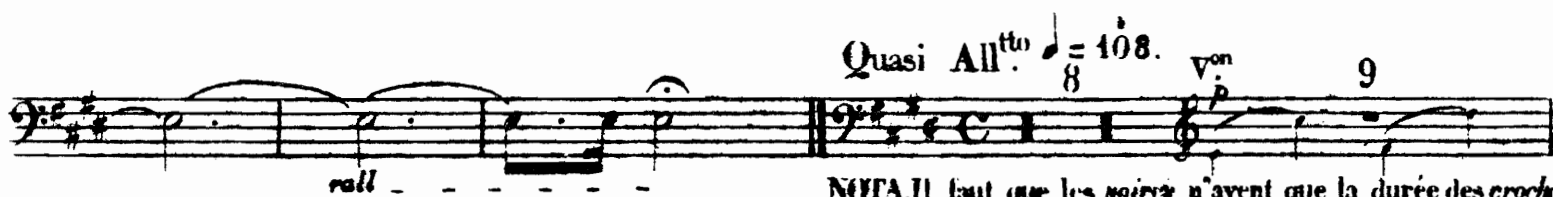
p

ff

p

ff

$\text{♩} = 108$
ADAGIO. *Piano.* 1 2 3 4 5
6 7 8 9 10
11 12 13 14 15
16 *Violle*
p
p
Piano. 1 2 3 4
5 6 7 8 9
10 11 12 13 14
15 16 *Violle*
p *cres.*



VIOLONCELLE.



Violoncelle musical score, page 8. The score is written in bass clef with a key signature of two sharps (F# and C#). It consists of ten staves of music. The first staff begins with a *cres* marking and ends with a *ff* dynamic. The second staff continues the melodic line. The third staff features a *cres e rit* marking. The fourth staff includes a tempo change to *1^{re} Mouvement.* with a tempo marking of $\text{♩} = 108$, and a *sempre ff* dynamic. The fifth staff continues the melodic line. The sixth staff begins with a *p* dynamic and a *molto rinf.* marking. The seventh staff starts with *tutta forza.* and features a series of chords. The eighth staff includes a tempo change to *2^{de} Mouvement.* with a tempo marking of $\text{♩} = 108$, and a *ff* dynamic. The ninth staff continues the melodic line. The tenth staff ends with a *tutta la forza.* marking.

cres *ff*

cres e rit *sempre ff*

1^{re} Mouvement. $\text{♩} = 108$

p *molto rinf.*

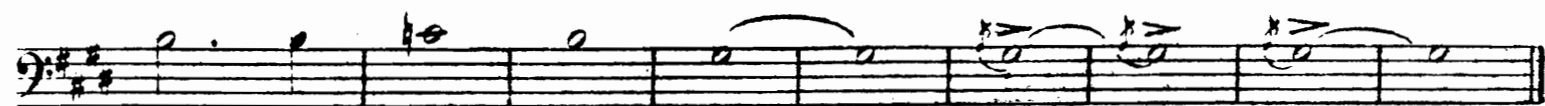
tutta forza.

2^{de} Mouvement. $\text{♩} = 108$ *ff*

tutta la forza.



Diminuez par degrés jusqu'à la fin



VIOLONCELLE.

FINAL. *Poco lento*. $\text{♩} = 63$

p ff *p* ff *p* ff *dim.* *p*

Piano. 1 2 *Moderato ma molto energico*. $\text{♩} = 126$.

pp *ff marcatisissimo*

Piano. 1

1 1 2 3 4 1

1 1 *Von* 1 1

1 2 3 4 *Vcelle*

p

p

cres

cen *do*

ff

Violoncelle musical score page 11, featuring ten staves of music in G major (one sharp). The score includes various dynamic markings and performance instructions:

- Staff 1:** Trill (tr) marking.
- Staff 2:** *sempre ff* (always fortissimo).
- Staff 3:** *p* (piano) and *ff* (fortissimo) markings.
- Staff 4:** *p legato.* (piano, legato).
- Staff 5:** *sempre pp* (always pianissimo).
- Staff 6:** *molto cres* (much crescendo).
- Staff 7:** *ff* (fortissimo) marking.
- Staff 8:** *ff* (fortissimo) marking.
- Staff 9:** *ff > p* (fortissimo to piano).
- Staff 10:** *pizz.* (pizzicato) marking, *Von* (Violoncello) marking, and a first ending bracket labeled *1*.

Violoncelle musical score page 12. The score is written for a single instrument, the Violoncelle, and consists of ten staves of music. The notation includes various musical symbols such as notes, rests, beams, and slurs, along with dynamic markings and performance instructions.

Key markings and instructions include:

- Staff 1:** *V^{on}*, *1*, *2*, *3*, *4*, *V^{olle}*, *pp arco.*
- Staff 2:** *pizz.*
- Staff 3:** *pizz.*, *poco a poco cres*
- Staff 4:** *arco*, *ren*, *no.*
- Staff 5:** *ff*, *1*
- Staff 6:** *p*, *2*
- Staff 7:** *ff*, *Il doppio più lento*, *2*, *1*, *2*, *Piano.*
- Staff 8:** *3*, *4*, *5*, *V^{olle}*, *pp sostenuto.*, *ppp*
- Staff 9:** *pp*, *molto cres*, *ff*, *dim.*, *pp*, *mf*, *molto espres.*

p

cres.

cres.

espres sempre cres rit

a tempo.

ff

tempo f' ♩ = 126.

ff *dim* *pp*

1

2

poco a poco cres

ff *p*

2

♩ = 126

ff

Il doppio più lento.

tempo f' ♩ = 126.

ff

Fin