

CONTRA-BASSO.

f. QUINTETTO

QUINTETTO.

pp

cre - - - - - scer - - -

do.

f

ff

f

f

f

f

f

f

14

Poco più lento.

riten.

p pizz.

arco.

p

a Tempo.

ri - le - nu - to.

f

f

f

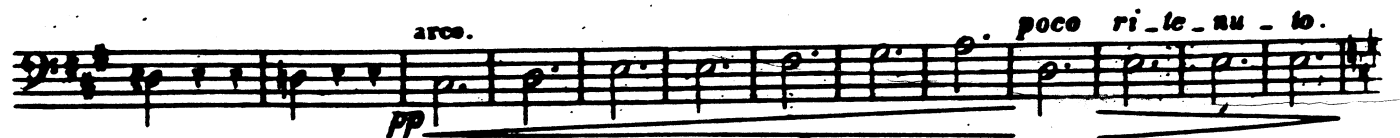
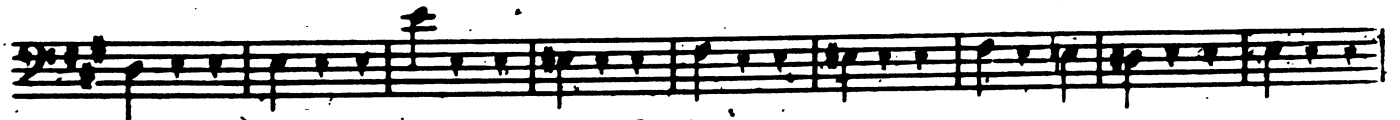
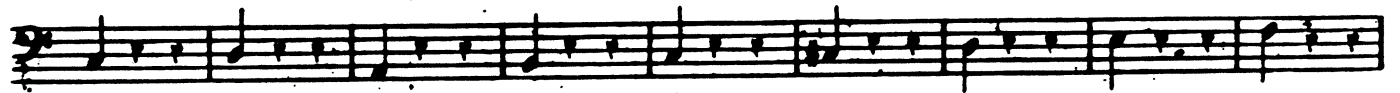
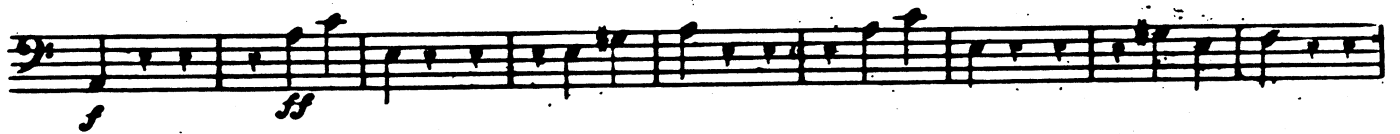
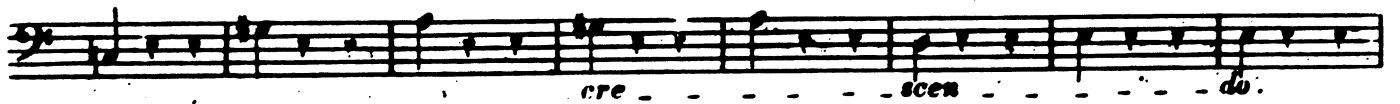
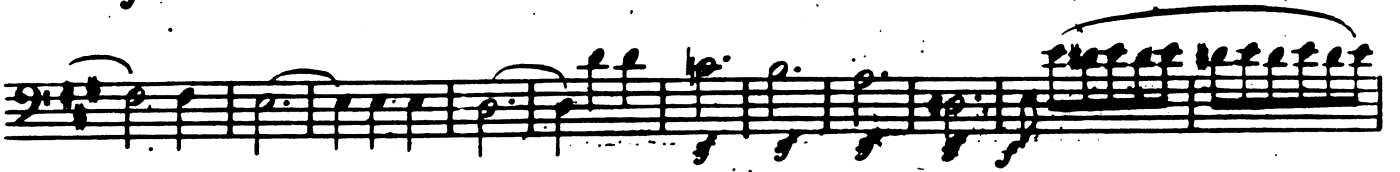
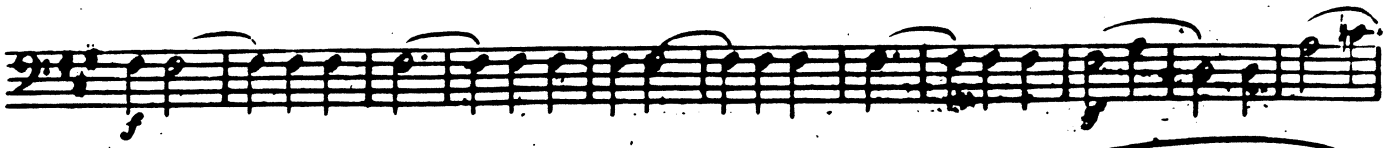
pp

f

CONTRA-BASSO.

The musical score for Contrabasso on page 3 consists of ten staves of music. The notation includes various rhythmic values, slurs, and dynamic markings. The first staff ends with a *pp* marking. The second staff ends with a *ff* marking and a measure number '2'. The third staff begins with a *p* marking. The fourth staff has measure numbers '1' and '2' and ends with a *p* marking. The fifth staff has a measure number '15' and ends with a *p* marking. The sixth staff begins with a *cresc.* marking, followed by a *f* marking, and ends with a *p* marking. The seventh staff ends with a *p* marking. The eighth staff ends with a *p* marking. The ninth staff ends with a *f* marking and a measure number '9'. The score concludes with a double bar line.

CONTRA-BASSO.



CONTRA-BASSO.

Musical score for Contrabasso, measures 1-10. The score consists of ten staves of music in bass clef. The first staff begins with a series of sixteenth notes. The second staff includes the dynamic marking *pp* and the vocal line "cre...". The third staff includes the vocal line "scen... do". The fourth and fifth staves include the dynamic marking *sf*. The sixth and seventh staves include the dynamic marking *f*. The eighth, ninth, and tenth staves continue the melodic and harmonic development.

ADAGIO.
non troppo.

Violoncello.

Piano.

Musical score for Violoncello and Piano, measures 10-14. The score consists of four staves of music in bass clef. The first staff is marked with *p* and includes the number 10. The second staff includes the dynamic marking *pp*. The third staff includes the dynamic marking *pp*. The fourth staff includes the dynamic marking *f*. The score features various rhythmic patterns and articulations.

CONTRA-BASSO.

1 - pizz.

2 arco.

p cre - - - scen - - - do ff

pizz.

pp arco.

f > pp

ri - tar - dan - do

SCHERZO.

Presto.
Fzmo.

Violino.

1 2 3 4 5 6 7

C. B.

p

f 3

CONTRA-BASSO.

12

p

cre - scen - do

Violino.

pizz.

1 2 3 *p*

2

6 *pizz.*

3

2 arco.

p

cre - scen

do

6 *p*

cre

scen - do

1

A. F. 529.



D.C. Scherzo
senza replica.

CONTRA-BASSO.

Allegro.

FINALE.

19

19

b

26

ri - - - le - - -

a Tempo.

pp

cresc.

p

8

CONTRA-BASSO.

First staff of music, bass clef, 4/4 time. It features a triplet of eighth notes and another triplet of eighth notes. There are dynamic markings *f* and *mf* with hairpins.

Second staff of music, bass clef, 4/4 time. It begins with a measure rest of 26 measures, followed by the tempo marking *a Tempo.* and dynamic markings *riten.* and *p pizz.*

Third staff of music, bass clef, 4/4 time. It features the marking *arco.* and ends with the marking *cre.*

Fourth staff of music, bass clef, 4/4 time. It includes the markings *accen.* and *do*, and ends with a measure rest of 1 measure.

Fifth staff of music, bass clef, 4/4 time. It features a measure rest of 1 measure, followed by a triplet of eighth notes, and ends with a measure rest of 3 measures.

Sixth staff of music, bass clef, 4/4 time. It contains a series of eighth notes with various dynamic markings.

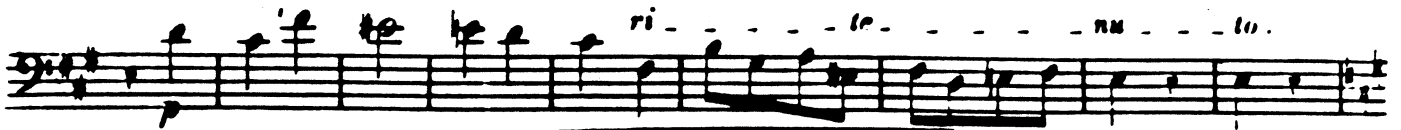
Seventh staff of music, bass clef, 4/4 time. It features a measure rest of 3 measures and a measure rest of 19 measures.

Eighth staff of music, bass clef, 4/4 time. It features a measure rest of 19 measures and a series of eighth notes.

Ninth staff of music, bass clef, 4/4 time. It contains a series of eighth notes with various dynamic markings.

Tenth staff of music, bass clef, 4/4 time. It features a measure rest of 26 measures, followed by a measure rest of 2 measures, and ends with a measure rest of 7 measures.

CONTRA-BASSO.



a Tempo.

