

Luigi Cherubini
Medea Overture

Corno I in F.

Allegro .

f

f

A 24 1 2
p

3 4 5 6 7 8 9 10 11
cresc.

B *f*

1 5 *f*

C 34 **D** 39

E *sf* *sf*

1

F 34 **G** 4 5 6 7 1

Ob. u. Clar.

Cherubini — Medea Overture

Corno I in F.

1

2

p

18

cresc.

H

p

f

f

f

cresc.

ff

ff

ff

ff

ff

ff

Luigi Cherubini
Medea Overture

Corno II in F.

Allegro.

24 1 2
2 4 p $\bar{\bar{a}}$ $\bar{\bar{a}}$

3 4 5 6 7 8 *cresc.*

B

1 5

C34 D39 E

F 34 G 4 5 6 7 1

Ob.u. Clar.

Cherubini — Medea Overture

Corno II in F.

1

2

p

18

cresc.

H

f

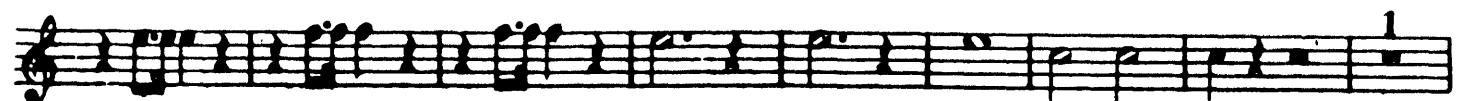
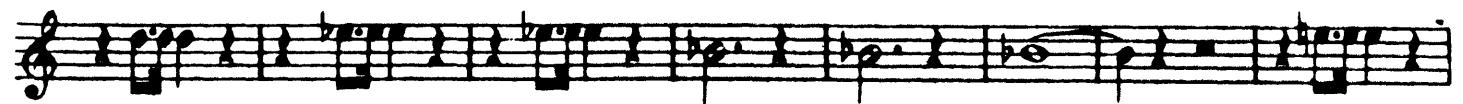
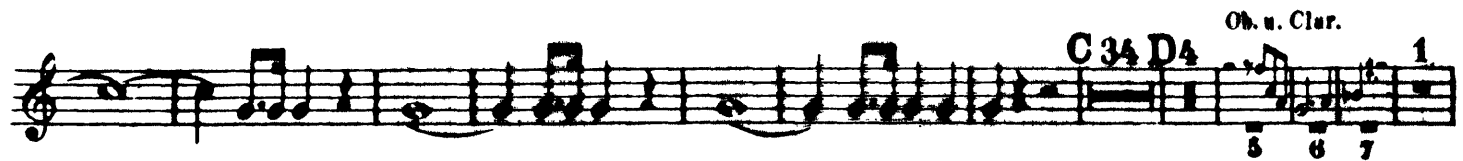
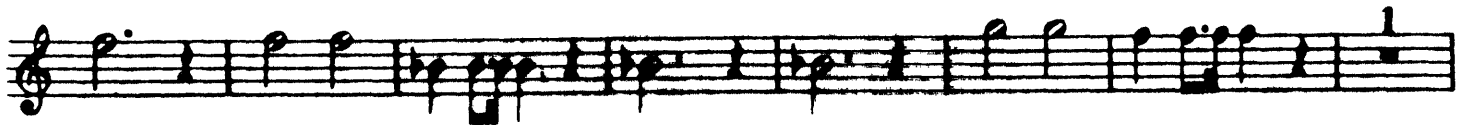
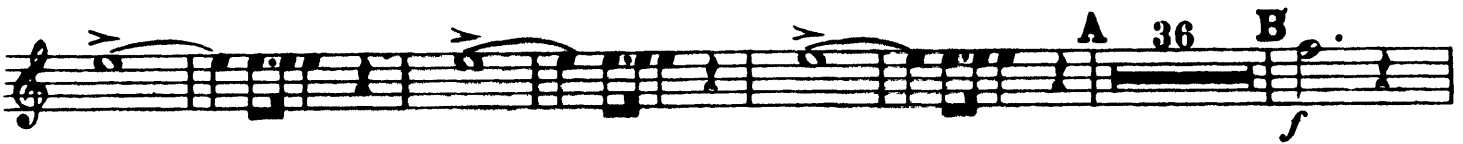
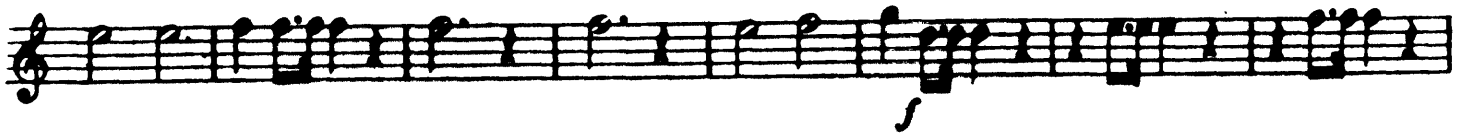
cresc.

sf

Luigi Cherubini
Medea Overture

Corno III in Es.

Allegro.



Cherubini — Medea Overture

2

Corno III in Es.

F 34 G 43 44 45 H.
Str. Instr.

cresc. *ff*

Luigi Cherubini
Medea Overture

Corno IV in Es.

Allegro.

The musical score for Corno IV in Es. from Medea Overture by Luigi Cherubini is presented in ten staves. The tempo is marked **Allegro.** The key signature is one sharp (F#). The score includes various dynamics such as *f* (forte), *p* (piano), and *sf* (sforzando). Performance markings include accents and fingerings (1, 2, 3, 4, 5, 6, 7). Section markers A, B, C, D, and E are placed above the staff. The score begins with a forte (*f*) dynamic and continues with a variety of rhythmic patterns and melodic lines.

Cherubini — Medea Overture

Corno IV in Es.

2

