

Guitarra

OPUS - 158 DOS DUOS NUMERO 2

TRANSCRIPCIÓN: LUIS ALVAREZ

FERNANDO CARULLI
(1770-1841)

♩ = 50

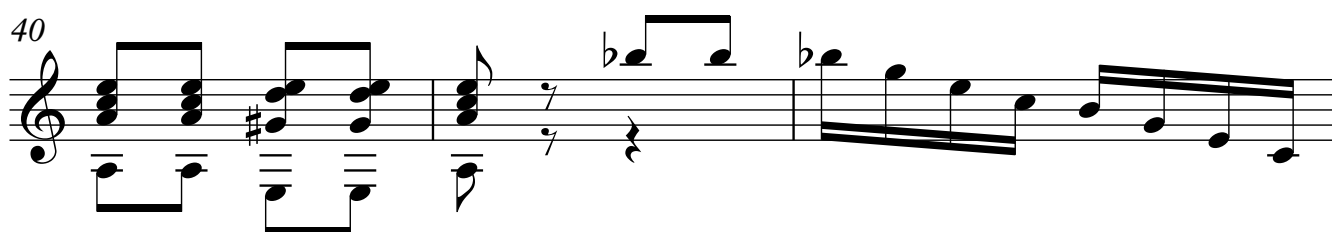
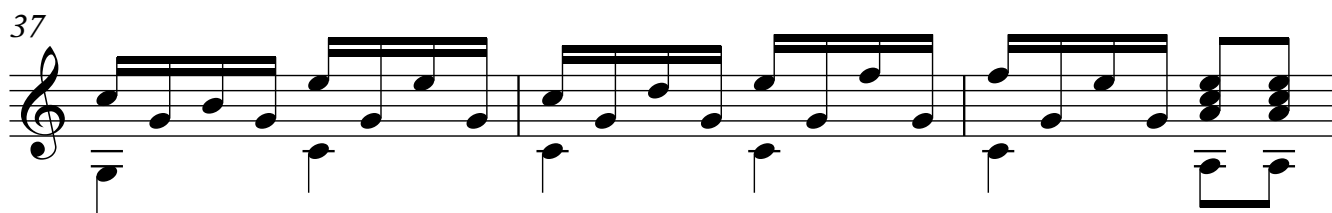
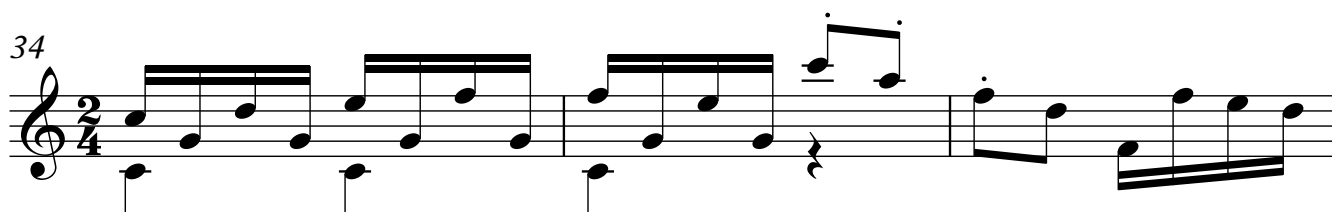
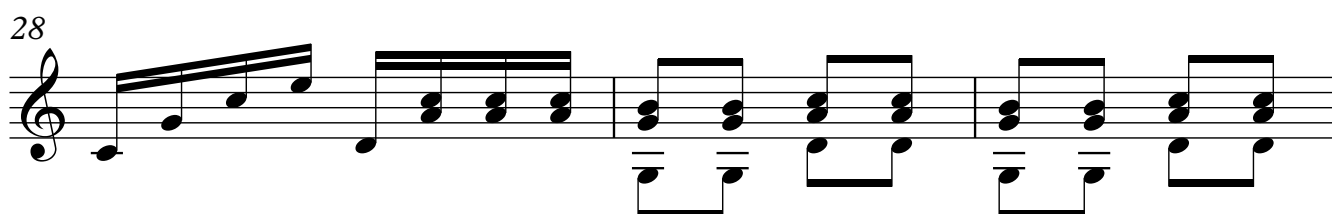
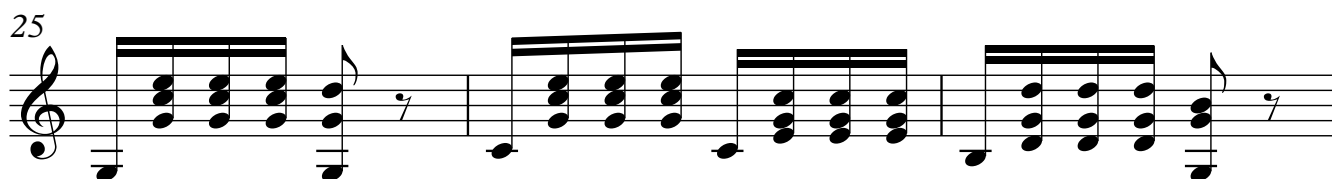
4

7

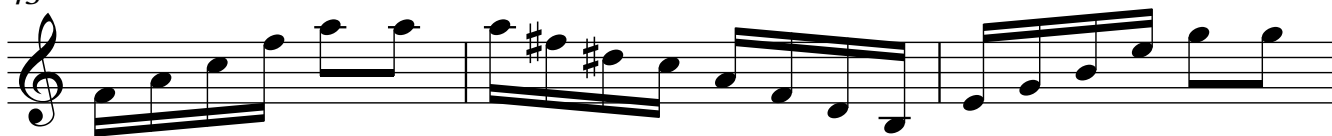
10

13

16



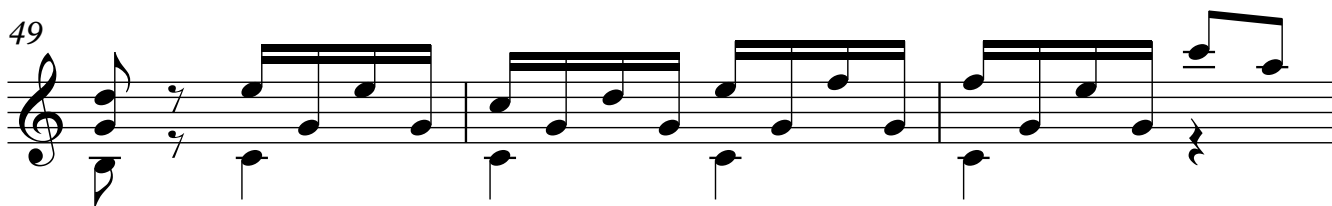
43



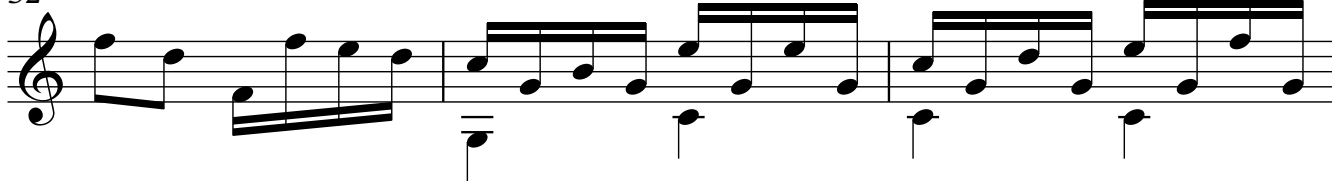
46



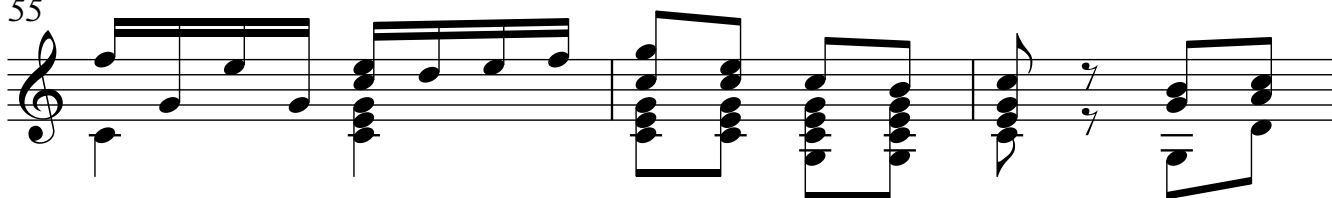
49



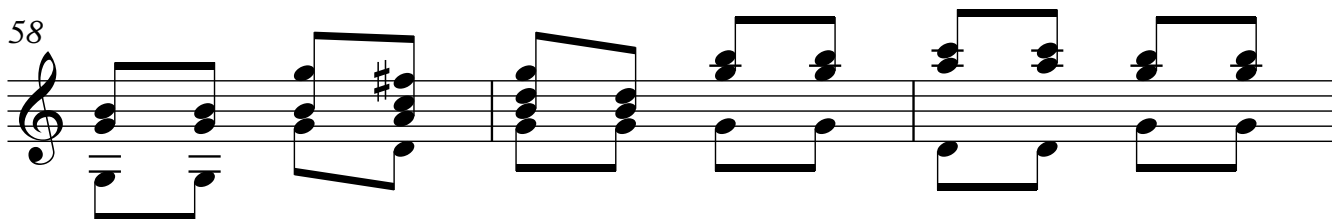
52



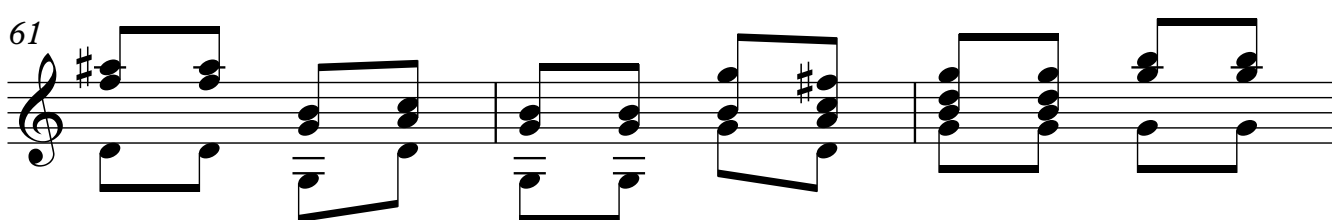
55



58



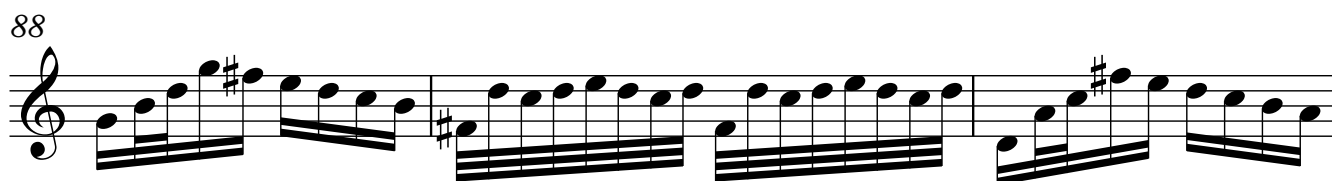
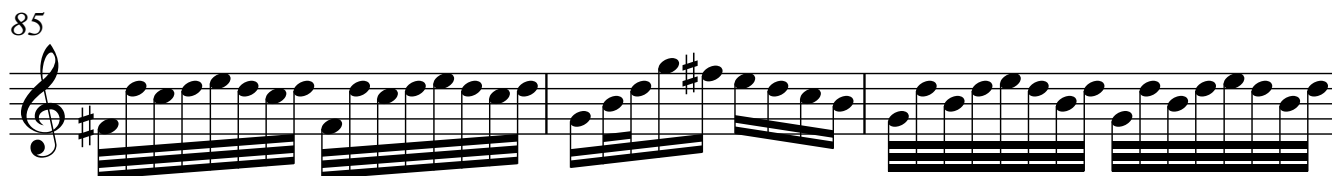
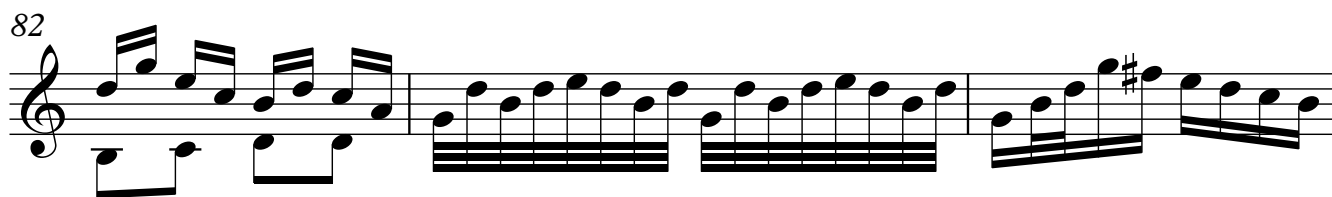
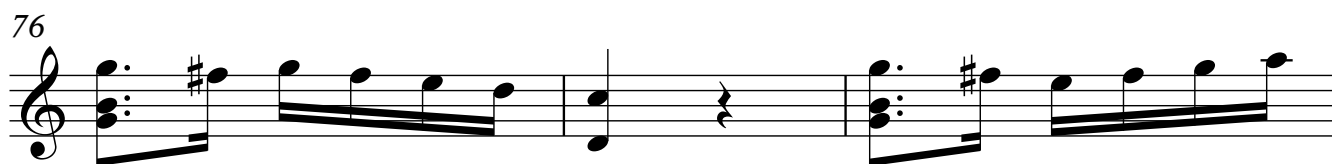
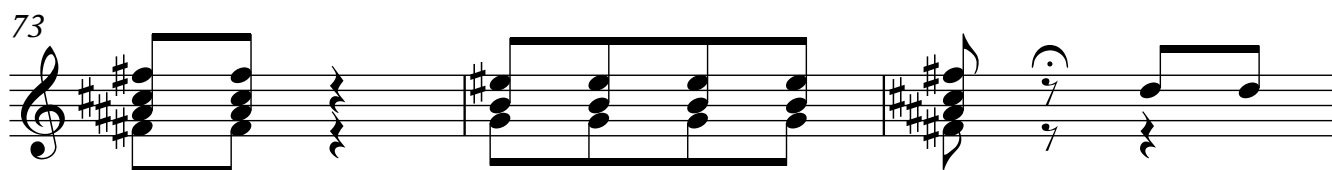
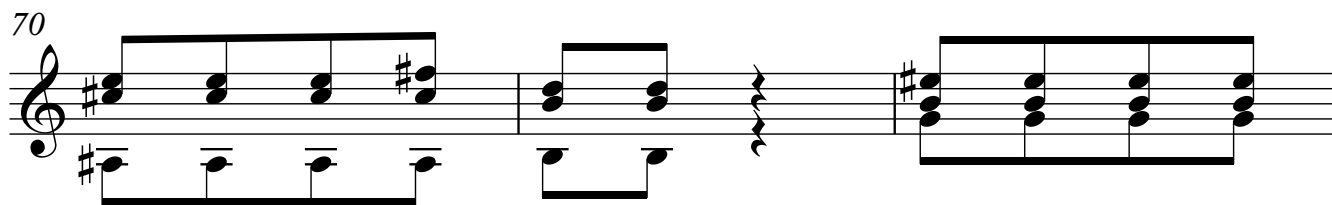
61



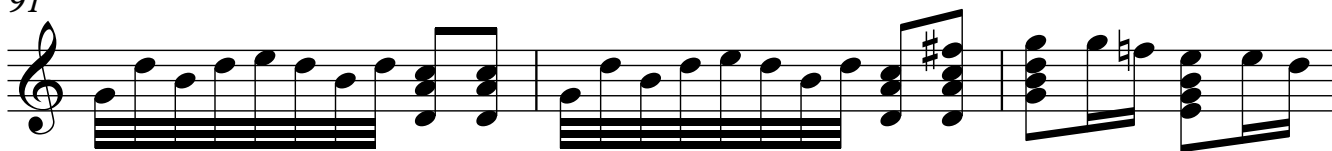
64



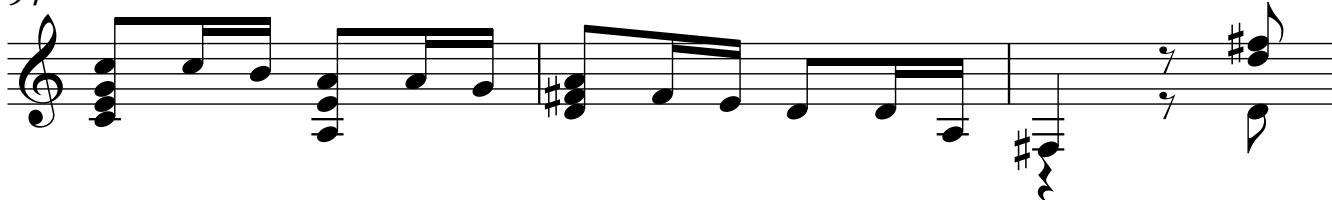
Guitarra



91



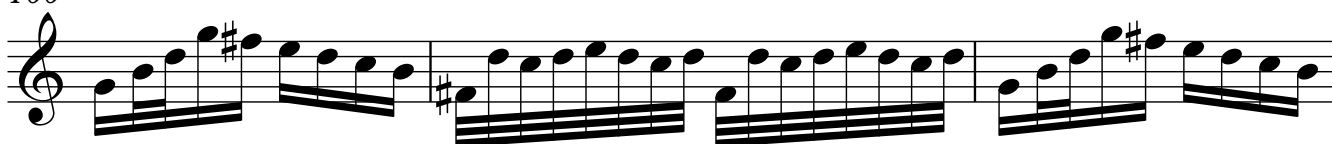
94



97



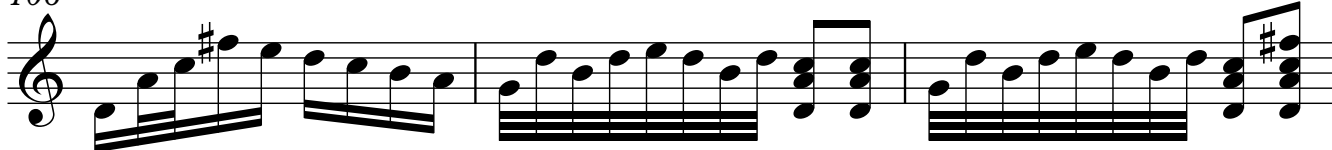
100



103



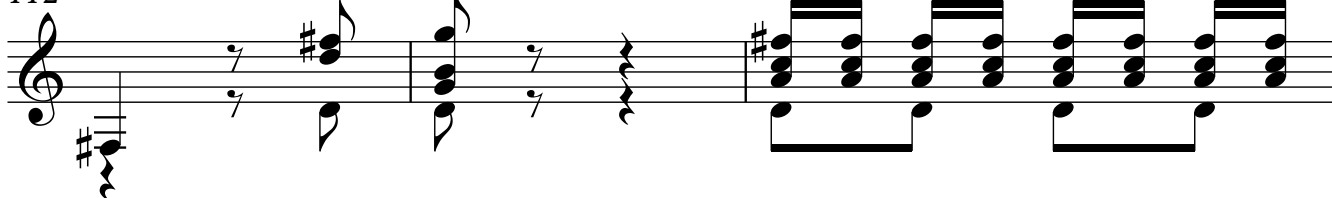
106

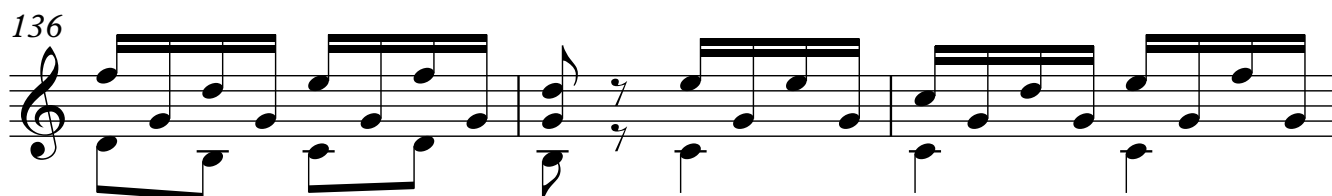
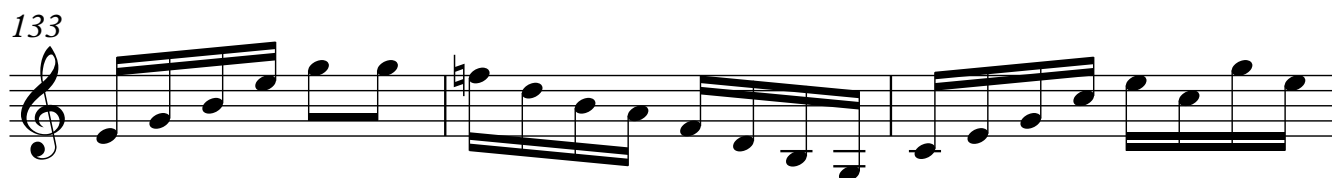
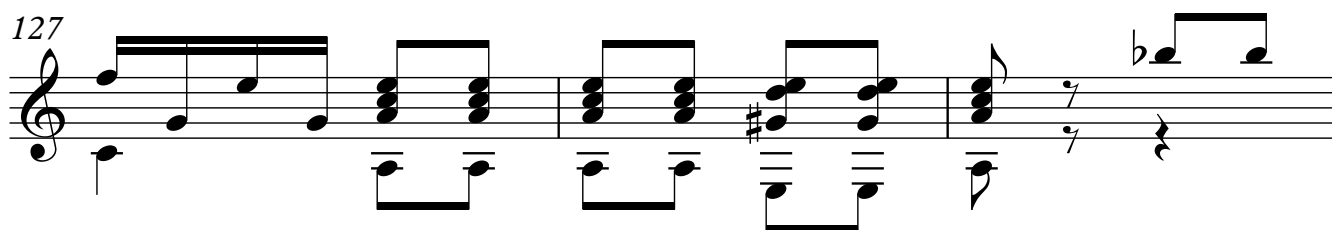
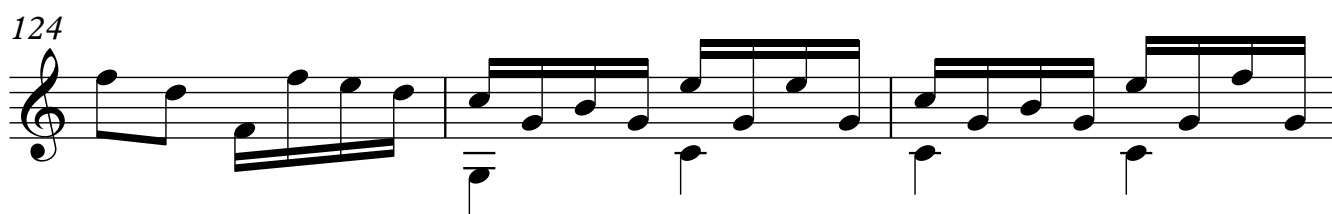
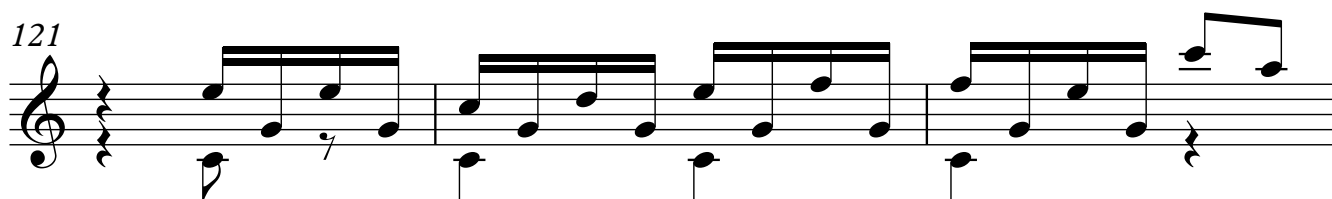
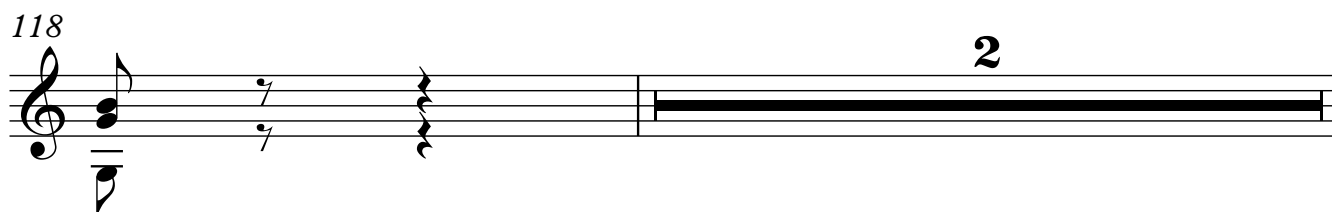


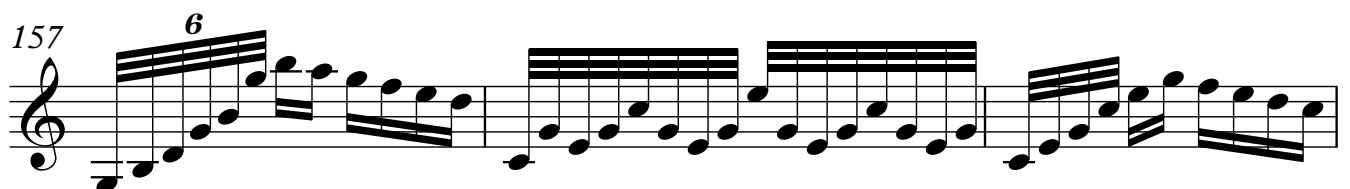
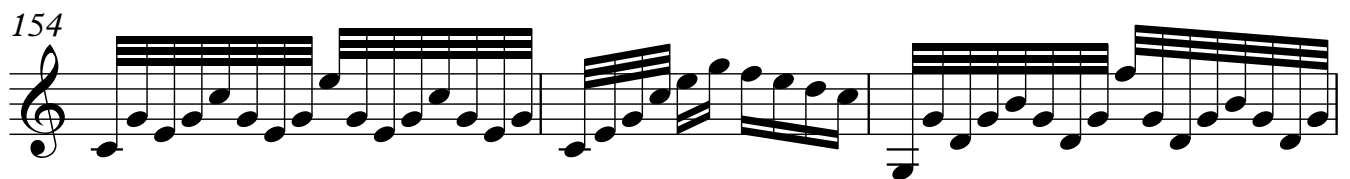
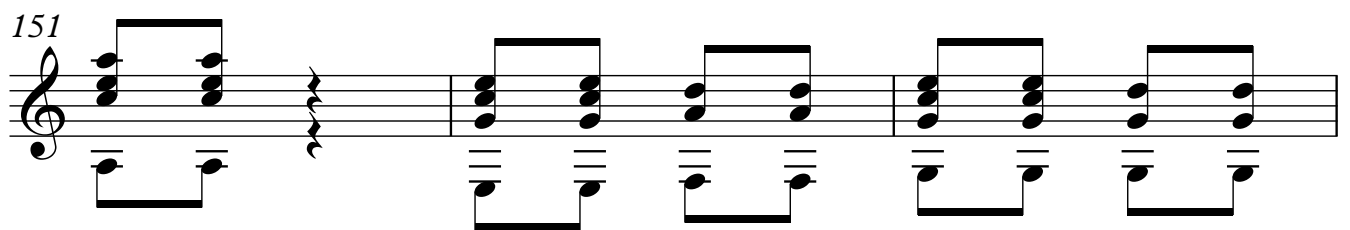
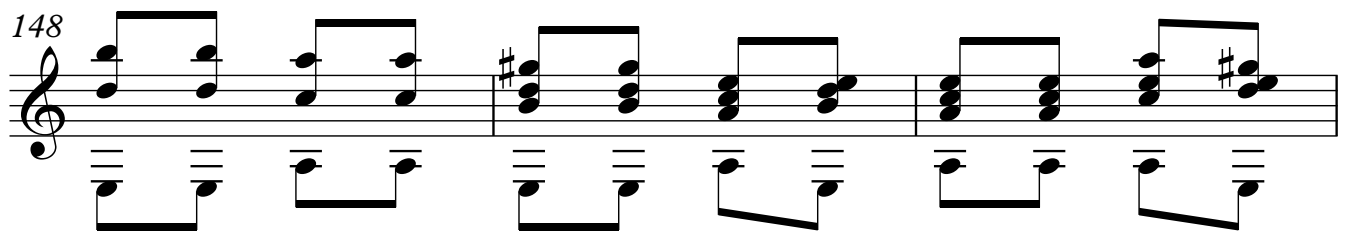
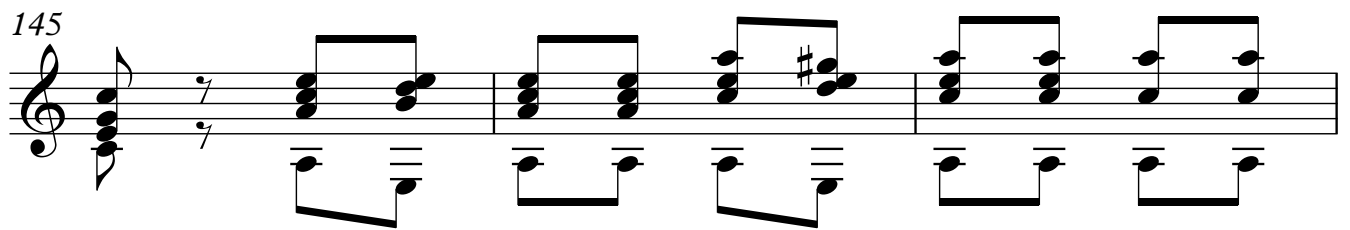
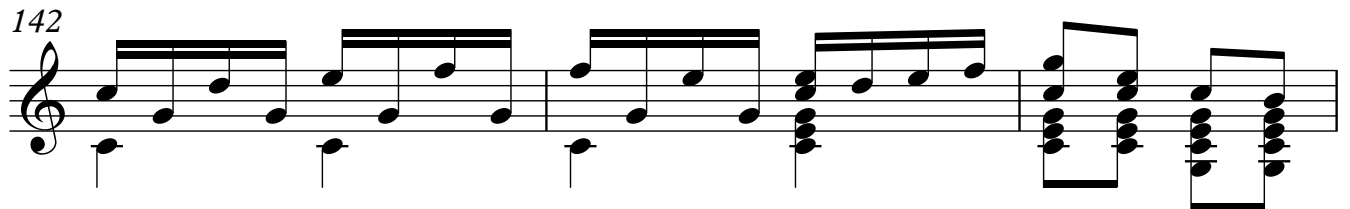
109

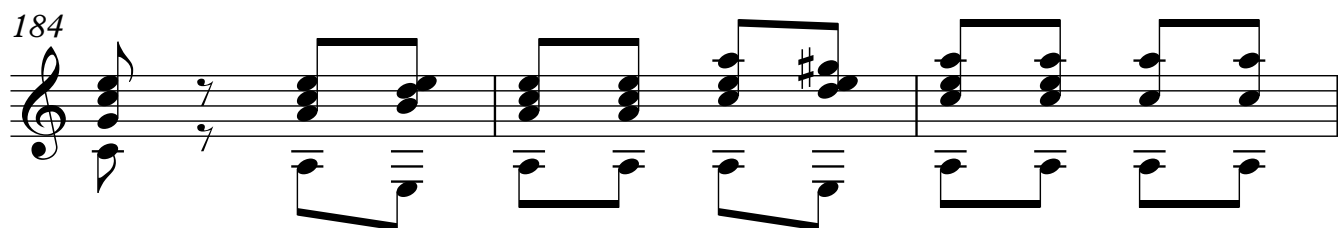
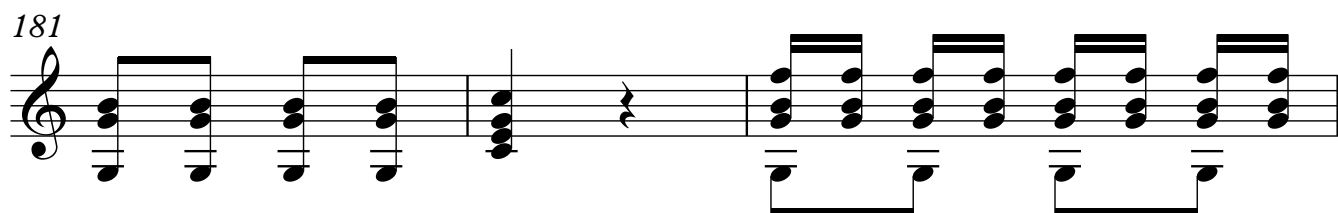
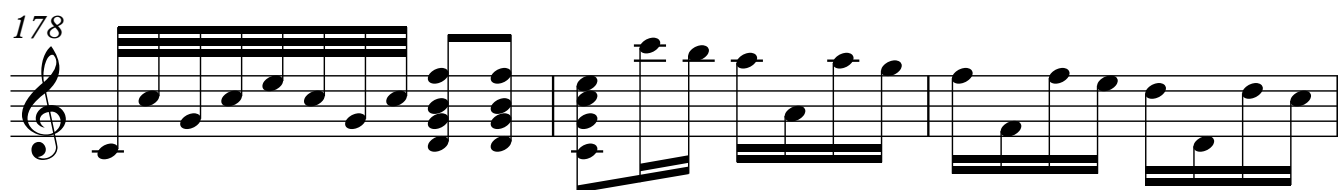
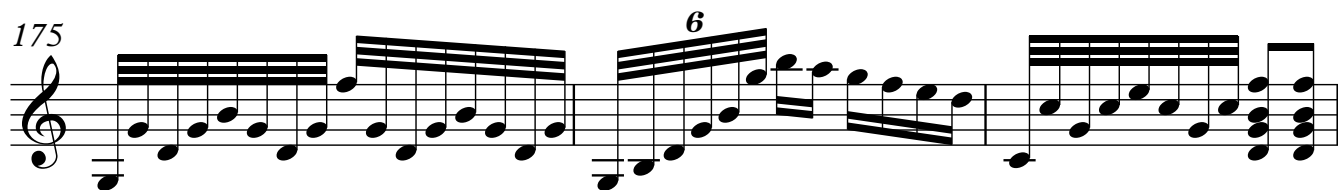
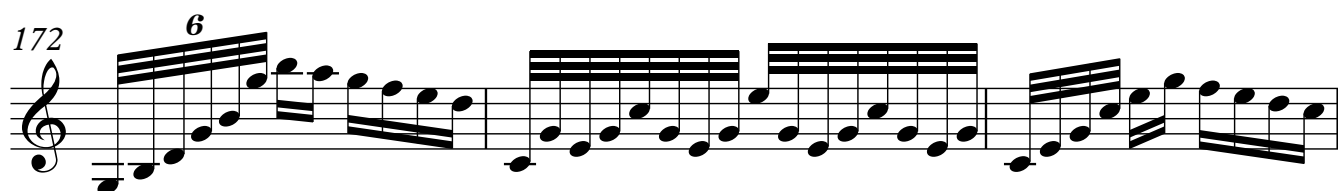
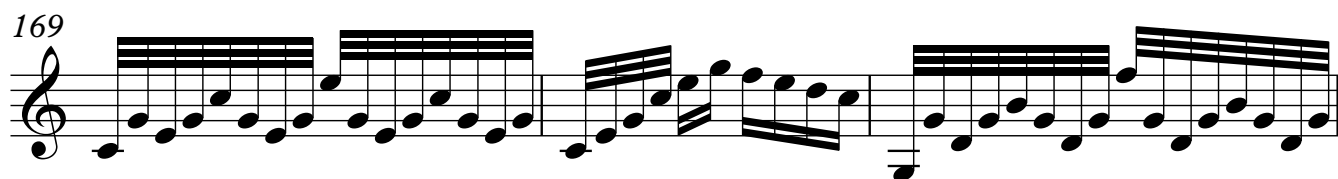
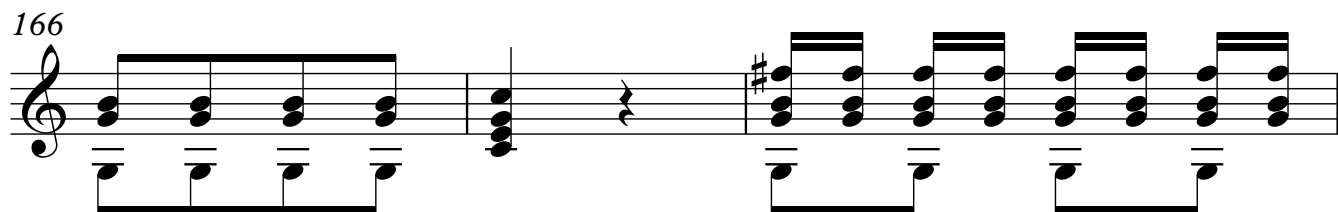
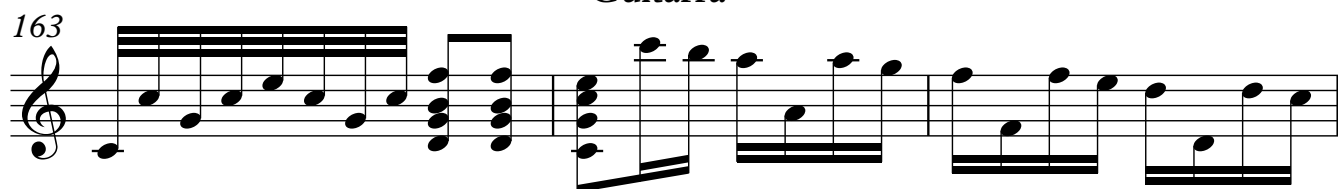


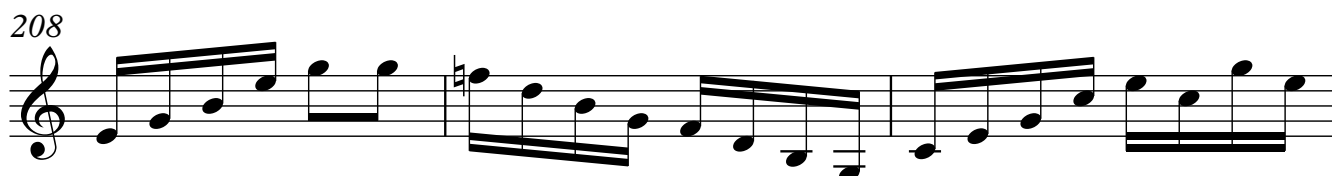
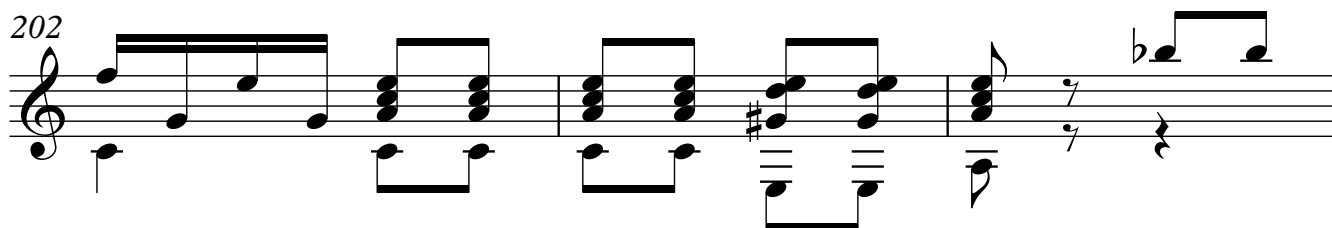
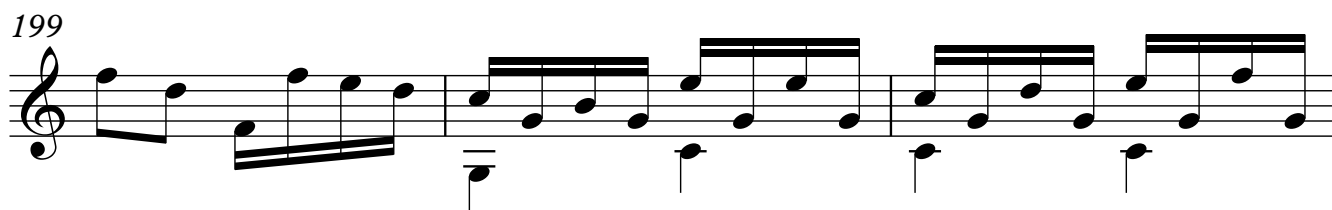
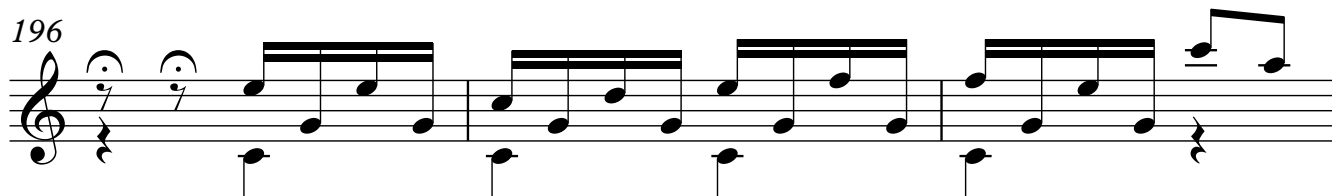
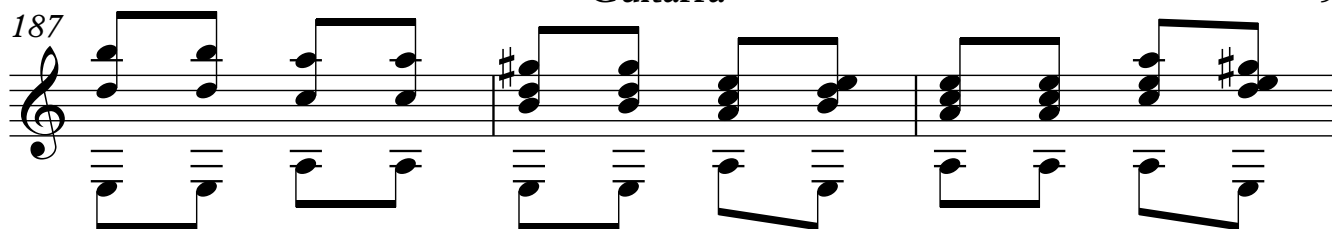
112











Guitarra

211



215

Example 10-12


219

Musical notation for exercise 219, featuring a treble clef and a series of chords and intervals. The notation includes a treble clef, a key signature of one sharp (F#), and a series of chords and intervals. The exercise is divided into two measures by a double bar line. The first measure contains a series of chords and intervals, and the second measure contains a series of chords and intervals. The notation is written in a standard musical notation style.

223



227



231



235

239