

Fagott

Giuseppe Maria Cambini (1746-1825)

Quintett No. 2 in d-Moll

Allegro espressivo

p dolce *cresc.*

7 *cresc.* *solo* *p*

13

17

23 *cresc.* *f*

29

33 *sf*

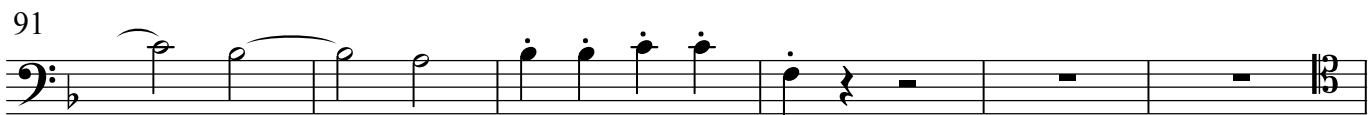
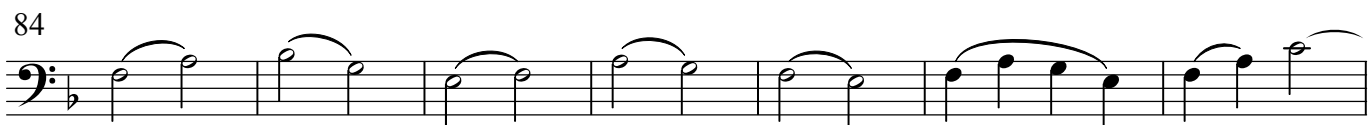
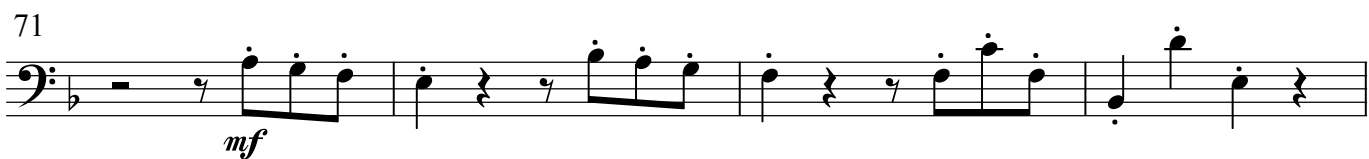
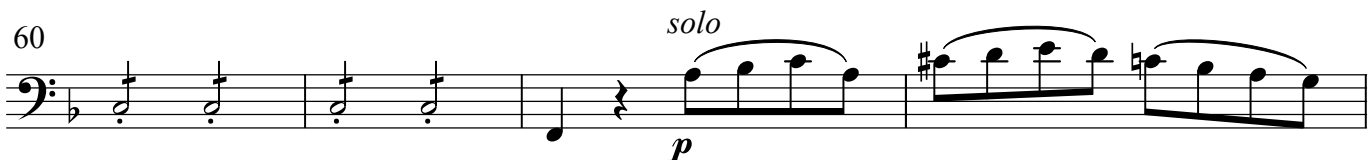
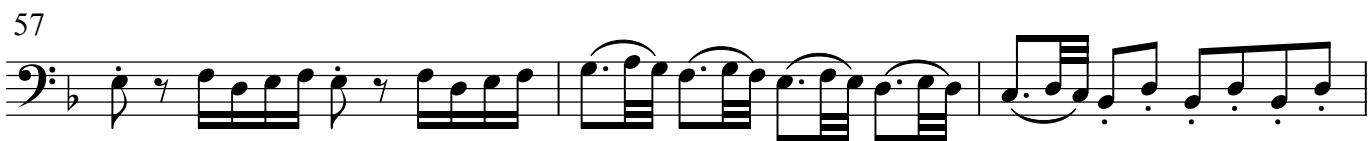
36 *p*

41 *cresc.* *p dolce*

47 *f*

53

Detailed description: This is a page of musical notation for the Bassoon part of Giuseppe Maria Cambini's Quintett No. 2 in d-Moll. The score is written in bass clef with a key signature of one flat (B-flat) and a common time signature (C). The tempo is marked 'Allegro espressivo'. The piece begins with a dynamic of *p dolce*. The first line (measures 1-6) features a melodic line with a *cresc.* marking. The second line (measures 7-12) includes a *solo* marking and ends with a *p* dynamic. The third line (measures 13-16) continues the melodic development. The fourth line (measures 17-22) shows a more rhythmic passage. The fifth line (measures 23-28) features a *cresc.* and *f* dynamic. The sixth line (measures 29-32) continues with a strong *f* dynamic. The seventh line (measures 33-35) is marked *sf*. The eighth line (measures 36-40) returns to a *p* dynamic. The ninth line (measures 41-46) includes a *cresc.* and *p dolce* marking. The tenth line (measures 47-52) features a triplet of eighth notes marked *f*. The eleventh line (measures 53-58) continues with a strong *f* dynamic.



97 *p* *mf*

104

109 *p* *dim.* *pp*

115

121 *p* *cresc.*

126 *f*

129

131 *cresc.*

134 *p*

138 *p cresc.* *p cresc.* *p dolce*

143 *p dolce*

150

Detailed description: This page of a musical score for Bassoon (Fagott) in Cambini Quintett No. 2, measures 97-150. The music is written in bass clef with a key signature of one flat (B-flat). The score consists of ten staves of music. Measure 97 starts with a piano (*p*) dynamic and a melodic line. Measure 104 continues the melodic line. Measure 109 features a piano (*p*) dynamic, followed by a *dim.* (diminuendo) and *pp* (pianissimo) section. Measure 115 continues the melodic line. Measure 121 starts with a piano (*p*) dynamic and a *cresc.* (crescendo) marking. Measure 126 is marked *f* (forte) and features a more active, ascending melodic line. Measure 129 continues the active melodic line. Measure 131 is marked *cresc.* and continues the active melodic line. Measure 134 starts with a piano (*p*) dynamic and a more melodic line. Measure 138 features a *p cresc.* (piano crescendo) section, followed by another *p cresc.* section, and ends with a *p dolce* (piano dolce) section. Measure 143 is marked *p dolce* and features a melodic line. Measure 150 continues the melodic line.

156



160



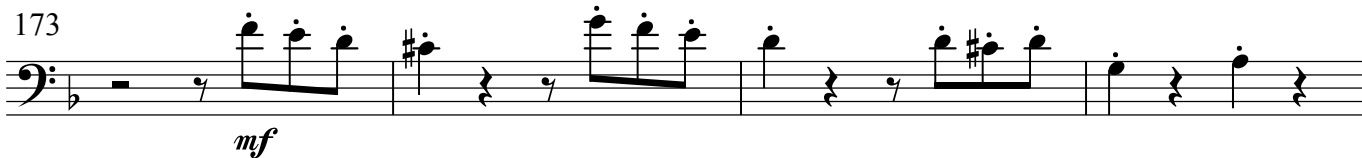
165



168



173



177



179



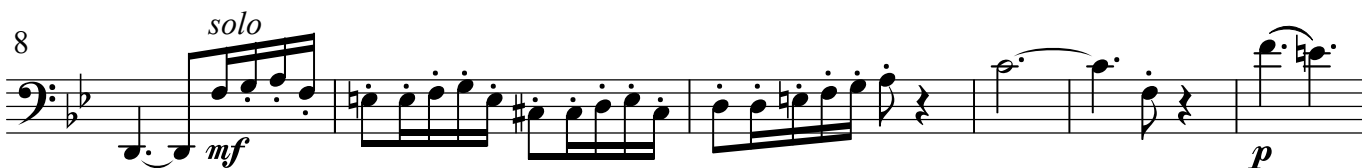
181



Larghetto sostenuto ma con moto



8



14



22 *solo*
mf *p dolce*

26

31 *f*

34 *mf* *p*

40 *cresc.* *mf* *p*

45 *mf* *p*

49 *cresc.* *p dolce* *dolce*

55 *solo*
mf

60 *cresc.* *f* *solo* *p*

67 *cresc.* *sfz*

73 *f* *p* *solo*
mf cresc.

79 *p*

83 *p* *pp*

Presto ma non tanto

7 *p*

14

23 *mf*

33

40 *cresc. f*

48 *solo p*

56 *p*

64 *mf cresc. f*

74 *solo f*

82 *f sfz*

90 *sfz f f* 4

104 *mf cresc.* *p dolce* *cresc.*

111 *sfz* *p dolce*

119 *dolce* *cresc.* *f*

128 *p*

136 *cresc.* *f*

143 *p*

152

158 *solo*

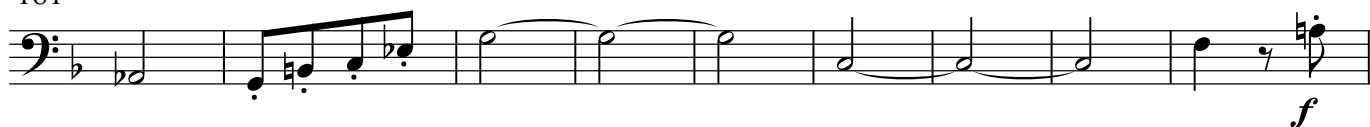
163

168 *dolce*

175

Detailed description: This page of a musical score for the Bassoon part of Cambini's Quintet No. 2 contains ten staves of music, numbered 104 to 175. The music is written in bass clef with a key signature of one flat (B-flat). The score includes various dynamic markings such as *mf cresc.*, *p dolce*, *sfz*, *dolce*, *cresc.*, *f*, *p*, and *solo*. It features a variety of rhythmic patterns, including eighth and sixteenth notes, and rests. A repeat sign is present at measure 136. The notation includes slurs, ties, and articulation marks.

181



190



197



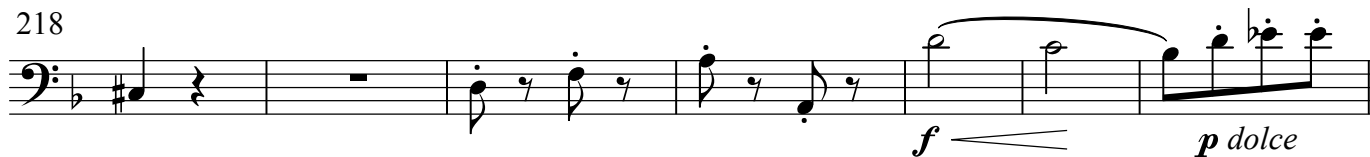
204



211



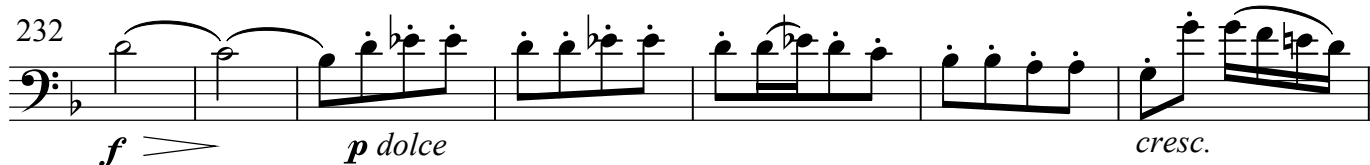
218



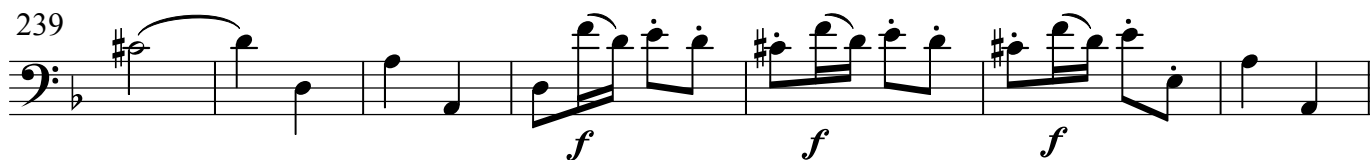
225



232



239



246



253



⋮