

TROIS PIÈCES

N° 1.

RENÉ DE BOISDEFFRE.

Op. 20.

MÉLODIE.

CLARINETTE
en SI b.

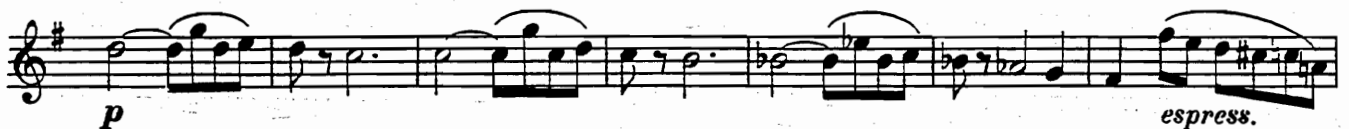
Andante espressivo.



Un peu plus animé.



Un peu plus animé.



PIÈCE DANS LE STYLE ANCIEN.

Andantino.



1
dim. *p*
p
cresc. *dim.* *p*
pp *dim.*

Nº 3.

BARCAROLLE.

Allegretto grazioso.

En SI b.

1
mf
pp
cresc.
cresc. *p*
f

First staff of music, starting with a treble clef and a key signature of one flat. It begins with a dynamic marking of *f* (forte) and features a series of eighth notes with slurs.

Second staff of music, continuing the melodic line. It starts with a dynamic marking of *dim.* (diminuendo) and includes a *p* (piano) marking.

Third staff of music, featuring a *pp* (pianissimo) dynamic marking.

Fourth staff of music, marked with *cresc.* (crescendo) in two locations.

Fifth staff of music, marked with *sf* (sforzando) and *dim.* (diminuendo).

Sixth staff of music, marked with *p* (piano), *pp* (pianissimo), and *cresc.* (crescendo).

Seventh staff of music, marked with *f* (forte), *p* (piano), and *p* (piano).

Eighth staff of music, marked with *pp* (pianissimo).

Ninth staff of music, marked with *cresc.* (crescendo) and *f* (forte).

Tenth staff of music, marked with *dim.* (diminuendo), *rit.* (ritardando), and *pp* (pianissimo).