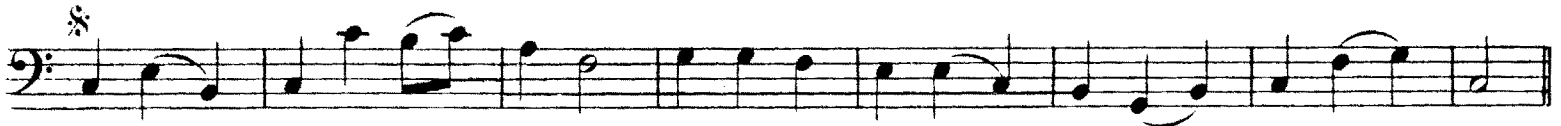


EASY DANCES

Minuetto

Luigi Boccherini



TRIO.



*) Soll das Stück als Quartett gespielt werden, so gilt Cello II & muss der Spieler a.d. betr. Stellen d. kl. Noten spielen.

Minuett D. C.
 dal segno §
 ma senza repet.

VIOLONCELLO II

Ballo Tedesco^{*}

(Deutscher Tanz)

Presto.

The musical score for Violoncello II of 'Ballo Tedesco' is written in 6/8 time and D major. It begins with a *Presto* tempo marking. The first staff starts with a *pp* dynamic and a melodic line. The second staff features a *pizz.* section followed by an *arco* section with a *p* dynamic and a *cresc.* marking. The third and fourth staves are marked *f* and *ff* respectively, showing a strong melodic and rhythmic drive. The fifth staff continues with *f* dynamics and ends with a *pizz.* section. The sixth staff is marked *arco* and *ff*. The seventh staff has a *2* marking and a *p* dynamic. The eighth and ninth staves are marked *f* and *ff*. The tenth staff features a *pizz.* section with a *pp* dynamic, followed by an *arco* section with a *p* dynamic. The final staff is marked *cresc.* and *ff*, ending with a *p* dynamic.

* Soll das Stück als Quartett gespielt werden, so gilt Cello II.

pizz. *pp* arco *f*

pp *ff*

2 3 4 5 6 7

Larghetto

Larghetto (non troppo lento.)

p dolce *p* *cresc.*

f *p* *p* *p dolce*

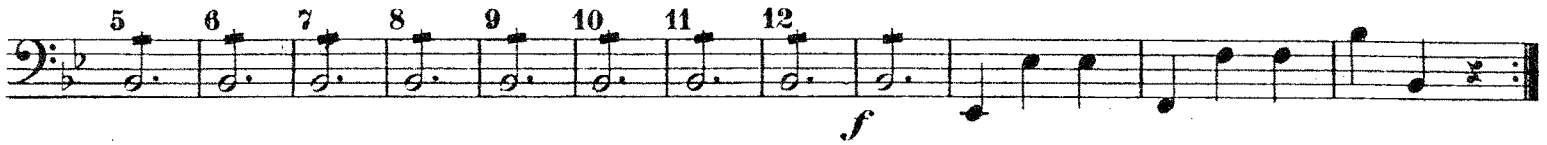
p *più f* *mf*

p *più f* *dim.*

f *p* *f*

p *p* *poco a poco cresc.* *f* *dim.*

p *poco a poco cresc.* *f* *p*



Minuetto a modo di Seguidilla Spagnola^{*)}

(Spanischer Tanz)

Tempo giusto.



TRIO.



*) Soll das Stück als Quartett gespielt werden, so gilt Cello II & muss der Spieler an den betr. Stellen die kleinen Noten spielen.