

LA SOMNEMBULA

de

BELLINI.

PAUL WAGNER.

6^e QUATUOR.

Allegro.

VIOLON.
 Musical notation for Violin part, measures 6-8. The key signature has two sharps (F# and C#) and the time signature is 6/8. The notation includes a first ending bracket over measures 6-8. Dynamics include *mf*, *Cresc*, *f*, *Cresc*, and *ff*. The instruction *Dim e rit p rit* is written below the staff.

Andante.

 Musical notation for Violin part, measures 7-9. The key signature has two sharps and the time signature is common time (C). The notation includes a first ending bracket over measures 7-9. The dynamic *P* and the instruction *Amaramente e legato* are written below the staff.

All^o mod^o

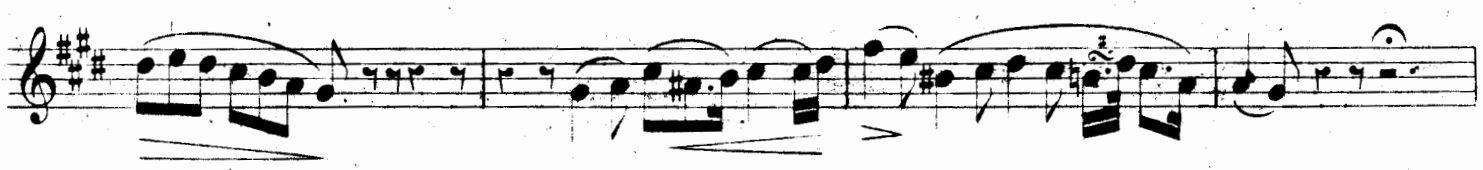
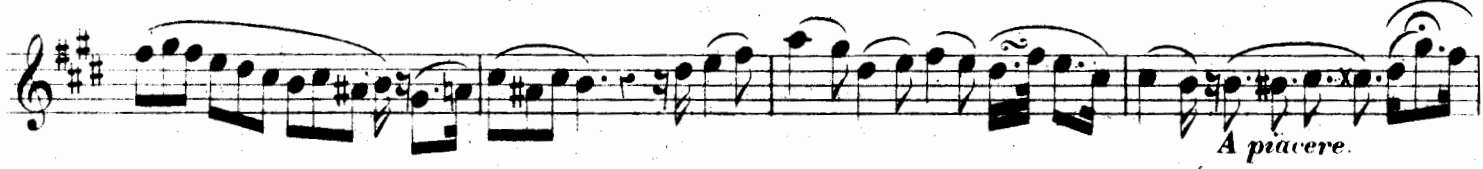
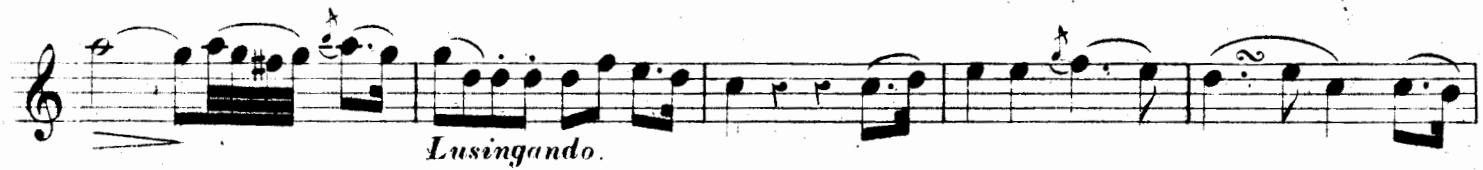
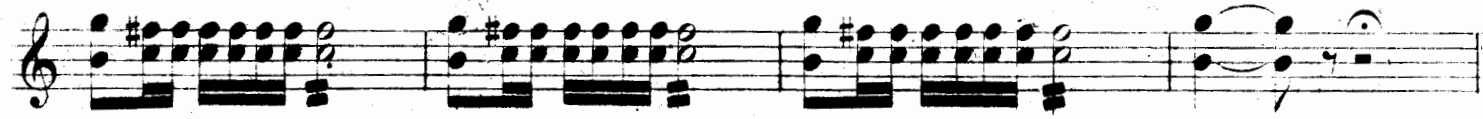
 Musical notation for Violin part, measures 10-12. The key signature has two sharps and the time signature is common time. The notation includes a first ending bracket over measures 10-12. The dynamic *p* and the instruction *Col canto* are written below the staff.

Vault
M
422
W135
no. 6

972791

VIO LON.

3



First staff of music, treble clef, key signature of three sharps (F#, C#, G#). It begins with a piano (*p*) dynamic marking and contains a series of eighth and sixteenth notes.

Second staff of music, treble clef, key signature of three sharps. Continues the melodic line with various note values and slurs.

Third staff of music, treble clef, key signature of three sharps. Features a more active melodic line with frequent slurs.

Fourth staff of music, treble clef, key signature of three sharps. Continues the melodic development with slurs and dynamic markings.

Fifth staff of music, treble clef, key signature of three sharps. Ends with a pianissimo (*pp*) dynamic marking.

Sixth staff of music, treble clef, key signature of three sharps. Begins with a piano (*p*) dynamic marking.

Seventh staff of music, treble clef, key signature of three sharps. Continues the melodic line with slurs.

Eighth staff of music, treble clef, key signature of three sharps. Features a section of sixteenth-note chords, marked with pianissimo (*pp*) dynamics.

Ninth staff of music, treble clef, key signature of three sharps. Includes a first ending bracket and a tempo change to *All^o mod^o*. It starts with a piano (*p*) dynamic and a *Cresc.* (crescendo) marking.

Tenth staff of music, treble clef, key signature of three sharps. Features a section of chords marked with *f* (forte) and *ff* (fortissimo) dynamics.

VIOLON.

ad lib.

Più vivo.

Dolce.

Cresc.

a Tempo.

A piacere.

Cresc.

p

Cresc.

A piacere.

a Tempo.

Più allegro.

Cresc.

ff