

Wellington's Victory or the Battle of Vittoria, Op. 91

TIMPANI.

ERSTE ABTHEILUNG.

Schlacht tacet.

in D.A.

ZWEITE ABTHEILUNG.

Intrada.

Allegro ma non troppo.

Sieges-Symphonie.

Musical notation for the first staff of the timpani part, featuring a series of sixteenth notes and a final flourish.

ff
Allegro con brio.

Musical notation for the second staff of the timpani part, featuring a rhythmic pattern of eighth and sixteenth notes.

Musical notation for the third staff of the timpani part, featuring a rhythmic pattern of eighth and sixteenth notes.

Musical notation for the fourth staff of the timpani part, featuring a rhythmic pattern of eighth and sixteenth notes with first endings.

Musical notation for the fifth staff of the timpani part, featuring a rhythmic pattern of eighth and sixteenth notes with second endings.

Musical notation for the sixth staff of the timpani part, featuring a rhythmic pattern of eighth and sixteenth notes.

Musical notation for the seventh staff of the timpani part, featuring a rhythmic pattern of eighth and sixteenth notes.

Musical notation for the eighth staff of the timpani part, featuring a rhythmic pattern of eighth and sixteenth notes with first endings.

Andante grazioso. Tempo I.

Musical notation for the ninth staff of the timpani part, featuring a slower tempo and dynamic markings.

Musical notation for the tenth staff of the timpani part, featuring a rhythmic pattern of eighth and sixteenth notes.

Musical notation for the eleventh staff of the timpani part, featuring a rhythmic pattern of eighth and sixteenth notes with first endings.

Musical notation for the twelfth staff of the timpani part, featuring a rhythmic pattern of eighth and sixteenth notes with second endings.

Beethoven — Wellington's Victory
TIMPANI.

ff f

Tempo di Menuetto moderato.

ff ff **Allegro.** 50 1 2 3 4 5
ritard. pp *cresc. poco a poco*
6 7 8 9 10 11 12 f

ff f

pp *cresc. poco a poco*

ff f

Ludwig van Beethoven
Wellington's Victory or the Battle of Vittoria, Op. 91

ERSTE ABTHEILUNG.

Schlacht.

TRIANGOLO.

Trommeln und Trompeten an der englischen Seite.

Englische Trommeln zuerst allein. *pp* *cresc.* etc. Dann treten dazu englische Trompeten in C.

The first staff shows a rhythmic pattern for drums, starting with a very soft *pp* dynamic and gradually increasing with *cresc.*. The second staff shows the entry of English trumpets in C, marked with *etc.*

Marcia: Rûle Britannia.

The first staff of the march is marked *p* and includes fingerings 1 through 9. The second staff continues the melody with a *cresc. poco à poco* instruction, leading to a *f* dynamic.

Trommeln und Trompeten an der französischen Seite.

Französische Trommeln zuerst allein. *pp* *cresc. poco à poco* etc. Dann treten dazu französische Trompeten in C.

The first staff shows the rhythmic pattern for French drums, starting with a very soft *pp* dynamic and increasing with *cresc. poco à poco*. The second staff shows the entry of French trumpets in C, marked with *etc.*

Marcia: Marlborough.

The first staff of the march is marked *p* and includes fingerings 1 through 7. The second staff continues the melody with a *cresc.* instruction. The third and fourth staves continue the piece, with the third staff marked *f* and including fingerings 1 through 5. The fifth staff includes fingerings 6 through 9.

Schlacht und Sturmmarsch tacet.

Beethoven — Wellington's Victory

TRIANGOLO.

ZWEITE ABTHEILUNG.

Sieges-Symphonie.

Intrada.

Allegro ma non troppo.

Allegro con brio.

Andante grazioso.

7 52 16

Tempo I.

53

Tempo di Menuetto moderato.

20

2

ritardando

Allegro.

70

ff

1 2 3 4 5 6 7 8 9 10

11 12 13 14 15 16 17 18 19 20

ff

12

ff

p cresc. poco a poco *f*

ff

20 1 2 3 4 5 6 7 1 1

ff

1 1 1 1

Beethoven — Wellington's Victory

Wellington's Sieg oder Die Schlacht bei Vittoria.

Dem Prinz-Regenten von England Georg August Friedrich gewidmet.

Piatti.

ERSTE ABTHEILUNG. Schlacht.

Trommeln und Trompeten an der englischen Seite.

Englische Trommeln zuerst allein.

Dann treten dazu englische Trompeten in C.

Musical notation for the first part of the English side. The drum part is on the left, starting with a *pp* dynamic and a *cresc.* marking. The trumpet part is on the right, starting with an *etc.* marking.

Marcia: Rèle Britannia.

Musical notation for the 'Rèle Britannia' march. It features a single staff with a *p* dynamic and a *sempre* marking. The first six measures are numbered 1 through 6. The piece concludes with a *cresc. poco a poco* marking.

Musical notation for the second part of the English side, featuring a single staff with a *f* dynamic marking.

Trommeln und Trompeten an der französischen Seite.

Französische Trommeln zuerst allein.

Dann treten dazu französische Trompeten in C.

Musical notation for the first part of the French side. The drum part is on the left, starting with a *pp* dynamic and a *cresc. poco a poco* marking. The trumpet part is on the right, starting with an *etc.* marking.

Marcia: Marlborough.

Musical notation for the 'Marlborough' march. It features a single staff with a *p* dynamic marking.

Musical notation for the second part of the French side, featuring a single staff with a *cresc.* marking.

Musical notation for the third part of the French side, featuring a single staff with a *f* dynamic marking and a section labeled 'A'.

Musical notation for the fourth part of the French side, featuring a single staff.

Musical notation for the fifth part of the French side, featuring a single staff with measures numbered 1 through 6.

Schlacht und Sturmmarsch tacet.

Piatti.

ZWEITE ABTHEILUNG.

Sieges-Symphonie.

Intrada.

Allegro ma non troppo.

Allegro con brio.

Andante grazioso.

7 25 I 21 K 6 16

Tempo I.

Tempo di Menuetto moderato.

26 L 21 M 6 12 N 8 2

ritardando

Allegro.

38 O 30 31 32 P 1 2 3 4 5 6 7 8 9

Gr Tamb. *ff*

10 11 12 13 14 15 16 17 18 19 20

ff *ff*

Q 16 1 2 3 4 5

f

6 1 2 3 4 R 5 6 7 8 9 1 20

ff

S 1 2 3 4 5 6 7 1 1

ff

1 1 1 1

Beethoven — Wellington's Victory

GRAN TAMBURO.

ERSTE ABTHEILUNG.

Schlacht.

Trommeln und Trompeten an der englischen Seite.

Englische Trommeln zuerst allein.



Dann treten dazu englische Trompeten in Es.



Marchia: Rule Britania.



Trommeln und Trompeten an der französischen Seite.

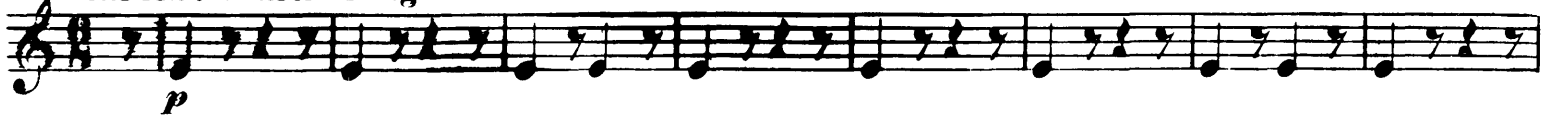
Französische Trommeln zuerst allein.



Dann treten dazu französische Trompeten in C.



Marchia: Marlborough.



Schlacht und Sturmmarsch tacet.

Beethoven — Wellington's Victory

GRAN TAMBURO.

ZWEITE ABTHEILUNG.

Sieges-Symphonie.

Intrada.

Allegro ma non troppo. Allegro con brio. Andante grazioso. Tempo I.

Musical notation for the first staff of the Intrada section, measures 1-53. The staff is in G major and 2/4 time. It begins with a treble clef and a key signature of one sharp (F#). The tempo is marked 'Allegro ma non troppo'. The notation includes rests and some melodic fragments.

Musical notation for the second staff, starting with 'Tempo di Menuetto moderato' and 'Allegro'. The staff is in G major and 3/4 time. It begins with a treble clef and a key signature of one sharp (F#). The tempo is marked 'Tempo di Menuetto moderato'. The notation includes a 'ritard.' marking and measures 20-7.

Musical notation for the third staff, measures 8-68. The staff is in G major and 3/4 time. It continues the melodic line from the previous staff. The notation includes a 'ritard.' marking and measures 8, 9, 10, 56, 67, 68.

Musical notation for the fourth staff, measures 11-15. The staff is in G major and 3/4 time. It continues the melodic line. The notation includes measures 11, 12, 13, 14, 15.

Musical notation for the fifth staff, measures 16-21. The staff is in G major and 3/4 time. It continues the melodic line. The notation includes measures 16, 17, 18, 19, 20, 21.

Musical notation for the sixth staff, measures 22-27. The staff is in G major and 3/4 time. It continues the melodic line. The notation includes measures 22, 23, 24, 25, 26, 27.

Musical notation for the seventh staff, measures 28-33. The staff is in G major and 3/4 time. It continues the melodic line. The notation includes a 'ff' marking and measures 28, 29, 30, 31, 32, 33.

Musical notation for the eighth staff, measures 34-39. The staff is in G major and 3/4 time. It continues the melodic line. The notation includes a 'ff' marking and measures 34, 35, 36, 37, 38, 39.

Musical notation for the ninth staff, measures 40-45. The staff is in G major and 3/4 time. It continues the melodic line. The notation includes a 'ff' marking and measures 40, 41, 42, 43, 44, 45.

Musical notation for the tenth staff, measures 46-51. The staff is in G major and 3/4 time. It continues the melodic line. The notation includes a 'ff' marking and measures 46, 47, 48, 49, 50, 51.

Musical notation for the eleventh staff, measures 52-57. The staff is in G major and 3/4 time. It continues the melodic line. The notation includes a 'ff' marking and measures 52, 53, 54, 55, 56, 57.